



## GATA-1 Polyclonal Antibody

Cat #: ABP51402

Size: 30µl /100µl /200µl

### Product Information

	<b>Product Name:</b> GATA-1 Polyclonal Antibody		
	<b>Applications:</b> WB, IHC-P, IP, IF, ELISA		<b>Isotype:</b> Rabbit IgG
	<b>Reactivity:</b> Human, Mouse, Rat		
<b>REF</b>	<b>Catalog Number:</b> ABP51402	<b>LOT</b>	<b>Lot Number:</b> Refer to product label
	<b>Formulation:</b> Liquid		<b>Concentration:</b> 1 mg/ml
	<b>Storage:</b> Store at -20°C. Avoid repeated freeze / thaw cycles.		<b>Note:</b> Contain sodium azide.

**Background:** GATA1 encodes Erythroid transcription factor which belongs to the GATA family of transcription factors. Erythroid transcription factor plays an important role in erythroid development by regulating the switch of fetal hemoglobin to adult hemoglobin. Mutations in GATA1 have been associated with X-linked dyserythropoietic anemia and thrombocytopenia.

**Application Notes:** Optimal working dilutions should be determined experimentally by the investigator. Suggested starting dilutions are as follows: WB (1:500-1:2000), IHC-P (1:100-1:300). IP(2-5 ug/mg lysate). IF (1:200-1:1000), ELISA (1:10000). Not yet tested in other appli

**Storage Buffer:** PBS containing 50% Glycerol, 0.5% BSA and 0.02% Sodium Azide.

**Storage Instructions:** Stable for one year at -20°C from date of shipment. For maximum recovery of product, centrifuge the original vial after thawing and prior to removing the cap. Aliquot to avoid repeated freezing and thawing.

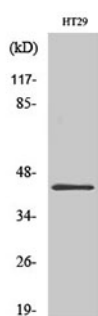


Fig. Western Blot analysis of various cells using GATA-1 Polyclonal Antibody diluted at 1:2000.

**Note:** The product listed herein is for research use only and is not intended for use in human or clinical diagnosis. Suggested applications of our products are not recommendations to use our products in violation of any patent or as a license. We cannot be responsible for patent infringements or other violations that may occur with the use of this product.