

Anti-Cytokeratin 14 Picoband Antibody

Catalog # ABO10185

Specification

Anti-Cytokeratin 14 Picoband Antibody - Product Information

Application	WB, IHC
Primary Accession	P02533
Host	Rabbit
Reactivity	Human, Mouse, Rat
Clonality	Polyclonal
Format	Lyophilized

Description

Rabbit IgG polyclonal antibody for Keratin, type I cytoskeletal 14(KRT14) detection. Tested with WB, IHC-P in Human;Mouse;Rat.

Reconstitution

Add 0.2ml of distilled water will yield a concentration of 500ug/ml.

Anti-Cytokeratin 14 Picoband Antibody - Additional Information

Gene ID 3861

Other Names

Keratin, type I cytoskeletal 14,
Cytokeratin-14, CK-14, Keratin-14, K14,
KRT14

Calculated MW

51561 MW KDa

Application Details

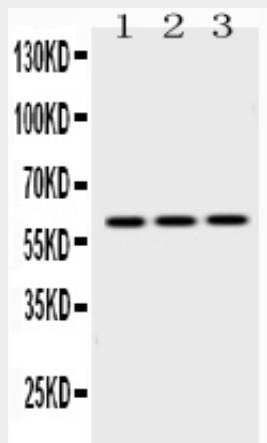
Immunohistochemistry(Paraffin-embedded Section), 0.5-1 µg/ml, Human, By Heat
Western blot, 0.1-0.5 µg/ml, Human, Mouse, Rat

Subcellular Localization

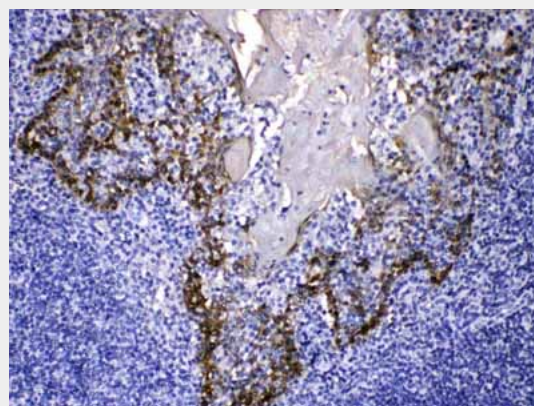
Cytoplasm. Nucleus. Expressed in both as a filamentous pattern.

Tissue Specificity

Detected in the basal layer, lowered within the more apically located layers specifically in the stratum spinosum, stratum granulosum but is not detected in stratum



Western blot analysis of Cytokeratin 14 expression in rat brain extract (lane 1), NIH3T3 whole cell lysates (lane 2) and HEPG2 whole cell lysates (lane 3). Cytokeratin 14 at 60KD was detected using rabbit anti-Cytokeratin 14 Antigen Affinity purified polyclonal antibody (Catalog # ABO10185) at 0.5 µg/mL. The blot was developed using chemiluminescence (ECL) method .



Cytokeratin 14 was detected in paraffin-embedded sections of human tonsil tissues using rabbit anti- Cytokeratin 14 Antigen Affinity purified polyclonal antibody (Catalog # ABO10185) at 1 µg/mL. The immunohistochemical section was developed using SABC method .

corneum. Strongly expressed in the outer root sheath of anagen follicles but not in the germinative matrix, inner root sheath or hair. Found in keratinocytes surrounding the club hair during telogen. .

Protein Name

Keratin, type I cytoskeletal 14

Contents

Each vial contains 5mg BSA, 0.9mg NaCl, 0.2mg Na₂HPO₄, 0.05mg NaN₃.

Immunogen

A synthetic peptide corresponding to a sequence at the C-terminus of human Cytokeratin 14 (446-472aa RQIRTKVMDVHDGKVVSTHEQVLRTKN), identical to the related mouse and rat sequences.

Purification

Immunogen affinity purified.

Cross Reactivity

No cross reactivity with other proteins

Storage

At -20°C for one year. After r°Constitution, at 4°C for one month. It°Can also be aliquotted and stored frozen at -20°C for a longer time.Avoid repeated freezing and thawing.

Anti-Cytokeratin 14 Picoband Antibody - Protein Information

Name KRT14

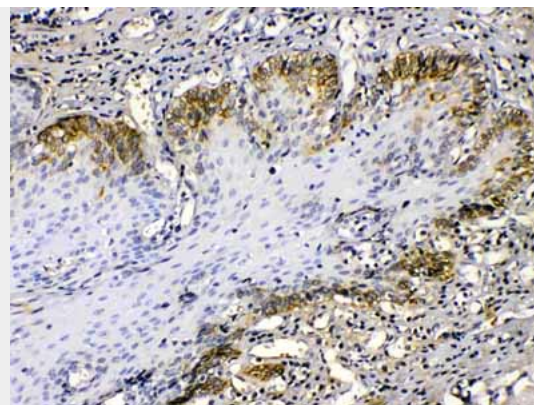
Function

The nonhelical tail domain is involved in promoting KRT5- KRT14 filaments to self-organize into large bundles and enhances the mechanical properties involved in resilience of keratin intermediate filaments in vitro.

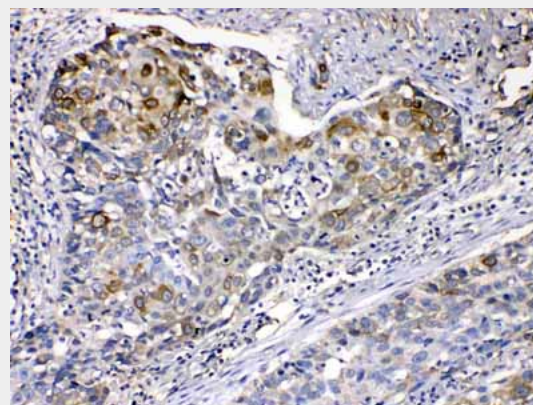
Cellular Location

Cytoplasm. Nucleus. Note=Expressed in both as a filamentous pattern

Tissue Location



Cytokeratin 14 was detected in paraffin-embedded sections of human oesophagus squama cancer tissues using rabbit anti- Cytokeratin 14 Antigen Affinity purified polyclonal antibody (Catalog # ABO10185) at 1 μ g/mL. The immunohistochemical section was developed using SABC method .



Cytokeratin 14 was detected in paraffin-embedded sections of human oesophagus squama cancer tissues using rabbit anti- Cytokeratin 14 Antigen Affinity purified polyclonal antibody (Catalog # ABO10185) at 1 μ g/mL. The immunohistochemical section was developed using SABC method .

Anti-Cytokeratin 14 Picoband Antibody - Background

Cytokeratin 14, also known as cytokeratin-14 (CK-14) or keratin-14 (KRT14), is a member of the type I keratin family of intermediate filament proteins. In humans it is encoded by the KRT14 gene. This gene product, a type I keratin, is usually found as a heterotetramer with two keratin 5 molecules, a type II keratin. Mutations in the genes for these keratins are

Expressed in the corneal epithelium (at protein level) (PubMed:26758872). Detected in the basal layer, lowered within the more apically located layers specifically in the stratum spinosum, stratum granulosum but is not detected in stratum corneum. Strongly expressed in the outer root sheath of anagen follicles but not in the germinative matrix, inner root sheath or hair (PubMed:9457912). Found in keratinocytes surrounding the club hair during telogen (PubMed:9457912).

associated with epidermolysis bullosa simplex. At least one pseudogene has been identified at 17p12-p11.

Anti-Cytokeratin 14 Picoband Antibody - Protocols

Provided below are standard protocols that you may find useful for product applications.

- [Western Blot](#)
- [Blocking Peptides](#)
- [Dot Blot](#)
- [Immunohistochemistry](#)
- [Immunofluorescence](#)
- [Immunoprecipitation](#)
- [Flow Cytometry](#)
- [Cell Culture](#)