

Anti-Myosin(Skeletal, Slow) Antibody (Monoclonal, NOQ7.5.4D) Catalog # ABO10452

Specification

Anti-Myosin(Skeletal, Slow) Antibody (Monoclonal, NOQ7.5.4D) - Product Information

| | |
|-------------------|------------------------|
| Application | WB |
| Primary Accession | P02564 |
| Host | Mouse |
| Isotype | Mouse IgG1 |
| Reactivity | Human, Mouse, Rat |
| Clonality | Monoclonal |
| Format | Lyophilized |

Description

Mouse IgG monoclonal antibody for Myosin (Skeletal, Slow), myosin, heavy chain 7, cardiac muscle, beta (MYH7) detection. Tested with WB, IHC-P in Human;mouse;rabbit;rat. No cross reactivity with other proteins.

Reconstitution

Add 1ml of PBS buffer will yield a concentration of 100ug/ml.

Anti-Myosin(Skeletal, Slow) Antibody (Monoclonal, NOQ7.5.4D) - Additional Information

Gene ID 29557

Other Names

Myosin-7, Myosin heavy chain 7, Myosin heavy chain slow isoform, MyHC-slow, Myosin heavy chain, cardiac muscle beta isoform, MyHC-beta, Myh7

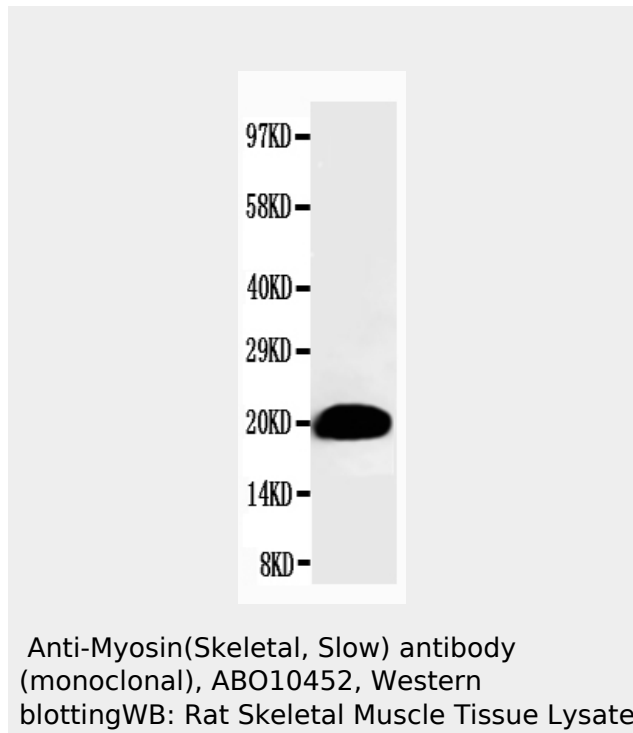
Calculated MW
223083 MW KDa

Application Details

Immunohistochemistry(Paraffin-embedded Section), 1-2 µg/ml, Human, mouse, rabbit, rat, By Heat
Western blot, 0.5-2 µg/ml, Human, mouse, rabbit, rat

Subcellular Localization

Cytoplasm, myofibril. Thick filaments of the myofibrils.



Anti-Myosin(Skeletal, Slow) Antibody (Monoclonal, NOQ7.5.4D) - Background

Myosin is composed of 2 heavy chains of about 200,000 daltons each and 4 light chains of about 20,000 daltons each. Skeletal Myosin(slow),, also known as light chain 3(MYL3), mapped to 3p. Fodor et al.(1989) found that the MYL3 gene has 7 exons, the last of which is completely untranslated 3-prime sequence.

Tissue Specificity

MYH7: Both wild type and variant Gln-403 are detected in skeletal muscle (at protein level).

Protein Name

Myosin-7

Contents

Mouse ascites fluid, 1.2% sodium acetate, 2mg BSA, with 0.01mg NaN₃ as preservative.

Immunogen

Human skeletal muscle myosin purified from myofibrils.

Purification

Ascites

Cross Reactivity

No cross reactivity with other proteins

Storage

At -20°C for one year. After receipt, at 4°C for one month. It can also be aliquotted and stored frozen at -20°C for a longer time. Avoid repeated freezing and thawing.

Sequence Similarities

Belongs to the TRAFAC class myosin-kinesin ATPase superfamily. Myosin family.

Anti-Myosin(Skeletal, Slow) Antibody (Monoclonal, NOQ7.5.4D) - Protein Information

Name Myh7**Function**

Myosins are actin-based motor molecules with ATPase activity essential for muscle contraction. Forms regular bipolar thick filaments that, together with actin thin filaments, constitute the fundamental contractile unit of skeletal and cardiac muscle.

Cellular Location

Cytoplasm, myofibril. Cytoplasm, myofibril, sarcomere. Note=Thick filaments of the myofibrils

**Anti-Myosin(Skeletal, Slow) Antibody
(Monoclonal, NOQ7.5.4D) - Protocols**

Provided below are standard protocols that you may find useful for product applications.

- [Western Blot](#)
- [Blocking Peptides](#)
- [Dot Blot](#)
- [Immunohistochemistry](#)
- [Immunofluorescence](#)
- [Immunoprecipitation](#)
- [Flow Cytometry](#)
- [Cell Culture](#)