

## Anti-IL5RA Antibody Catalog # ABO10932

### Specification

#### Anti-IL5RA Antibody - Product Information

Application **WB**  
Primary Accession [Q01344](#)  
Host **Rabbit**  
Reactivity **Human**  
Clonality **Polyclonal**  
Format **Lyophilized**

#### Description

Rabbit IgG polyclonal antibody for Interleukin-5 receptor subunit alpha(IL5RA) detection. Tested with WB in Human.

#### Reconstitution

Add 0.2ml of distilled water will yield a concentration of 500ug/ml.

#### Anti-IL5RA Antibody - Additional Information

**Gene ID** 3568

#### Other Names

Interleukin-5 receptor subunit alpha, IL-5 receptor subunit alpha, IL-5R subunit alpha, IL-5R-alpha, IL-5RA, CDw125, CD125, IL5RA, IL5R

#### Calculated MW

47685 MW KDa

#### Application Details

Western blot, 0.1-0.5 µg/ml, Human

#### Subcellular Localization

Membrane; Single-pass type I membrane protein.

#### Tissue Specificity

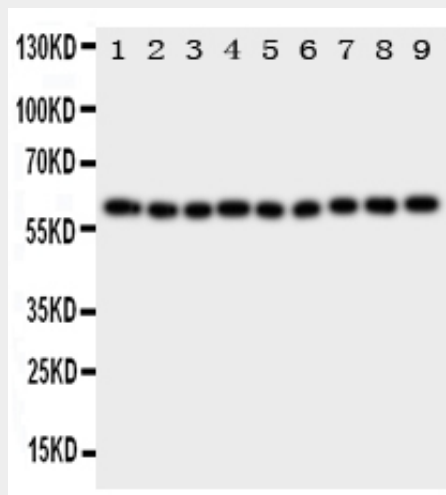
Expressed on eosinophils and basophils.

#### Protein Name

Interleukin-5 receptor subunit alpha(IL-5 receptor subunit alpha/IL-5R subunit alpha/IL-5R-alpha/IL-5RA)

#### Contents

Each vial contains 5mg BSA, 0.9mg NaCl,



Anti-IL5RA antibody, ABO10932, Western blotting All lanes: Anti IL5RA (ABO10932) at 0.5ug/ml Lane 1: A549 Whole Cell Lysate at 40ug Lane 2: SMMC Whole Cell Lysate at 40ug Lane 3: U87 Whole Cell Lysate at 40ug Lane 4: 293T Whole Cell Lysate at 40ug Lane 5: PANC Whole Cell Lysate at 40ug Lane 6: HELA Whole Cell Lysate at 40ug Lane 7: JURKAT Whole Cell Lysate at 40ug Lane 8: RAJI Whole Cell Lysate at 40ug Lane 9: CEM Whole Cell Lysate at 40ug Predicted bind size: 48KD Observed bind size: 60KD

#### Anti-IL5RA Antibody - Background

IL5RA(INTERLEUKIN 5 RECEPTOR, ALPHA), also known as CD125, is a subunit of the Interleukin-5 receptor. IL5RA also denotes its human gene. The protein encoded by this gene is an interleukin 5 specific subunit of a heterodimeric cytokine receptor which is composed of a ligand specific alpha subunit and a signal transducing beta subunit shared by the receptors for interleukin 3(IL3), colony stimulating factor 2(CSF2/GM-CSF), and interleukin 5(IL5). The IL5RA gene is mapped to 3p26-p24 by Southern blot analysis of DNA from a panel of mouse-human hybrid somatic cell lines complemented by in situ

0.2mg Na<sub>2</sub>HPO<sub>4</sub>, 0.05mg Thimerosal,  
0.05mg NaN<sub>3</sub>.

**Immunogen**

A synthetic peptide corresponding to a sequence at the N-terminus of human IL5RA(53-68aa NPDQEQARNVNLEYQVK).

**Purification**

Immunogen affinity purified.

**Cross Reactivity**

No cross reactivity with other proteins

**Storage**

**At -20°C for one year. After reconstitution, at 4°C for one month. It can also be aliquotted and stored frozen at -20°C for a longer time. Avoid repeated freezing and thawing.**

**Sequence Similarities**

Belongs to the type I cytokine receptor family. Type 5 subfamily.

hybridization. And its Cytogenetic location is 3p26.2. Within this 15-residue stretch of IL5RA, the C-terminal phenylalanine is critical. The binding of this protein to IL5 depends on the beta subunit which is activated by the ligand binding and is required for the biological activities of IL5.

**Anti-IL5RA Antibody - Protein Information**

**Name** IL5RA

**Synonyms** IL5R

**Function**

This is the receptor for interleukin-5. The alpha chain binds to IL5.

**Cellular Location**

Membrane; Single-pass type I membrane protein.

**Tissue Location**

Expressed on eosinophils and basophils.

**Anti-IL5RA Antibody - Protocols**

Provided below are standard protocols that you may find useful for product applications.

- [Western Blot](#)
- [Blocking Peptides](#)
- [Dot Blot](#)

- [Immunohistochemistry](#)
- [Immunofluorescence](#)
- [Immunoprecipitation](#)
- [Flow Cytometry](#)
- [Cell Culture](#)