

Anti-ADAM2 Antibody Catalog # ABO11375

Specification

Anti-ADAM2 Antibody - Product Information

Application	WB
Primary Accession	Q99965
Host	Rabbit
Reactivity	Human
Clonality	Polyclonal
Format	Lyophilized

Description

Rabbit IgG polyclonal antibody for Disintegrin and metalloproteinase domain-containing protein 2(ADAM2) detection. Tested with WB in Human.

Reconstitution

Add 0.2ml of distilled water will yield a concentration of 500ug/ml.

Anti-ADAM2 Antibody - Additional Information

Gene ID 2515

Other Names

Disintegrin and metalloproteinase domain-containing protein 2, ADAM 2, Cancer/testis antigen 15, CT15, Fertilin subunit beta, PH-30, PH30, PH30-beta, ADAM2, FTNB

Calculated MW

82457 MW KDa

Application Details

Western blot, 0.1-0.5 µg/ml, Human

Subcellular Localization

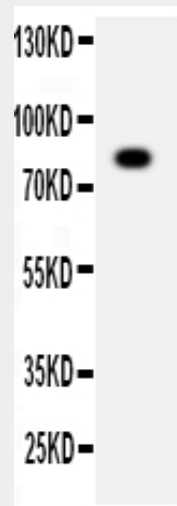
Membrane; Single-pass type I membrane protein.

Tissue Specificity

Expressed specifically in spermatogenic cells in the seminiferous cells. Not detected in fetal tissues.

Protein Name

Disintegrin and metalloproteinase domain-containing protein 2



Anti-ADAM2 antibody, ABO11375, Western blottingWB: SMMC Cell Lysate

Anti-ADAM2 Antibody - Background

ADAM2(A Disintegrin and Metalloproteinase Domain 2) , also known as FTNB or PH30, is an enzyme that in humans is encoded by the ADAM2 gene. This gene encodes a member of the ADAM(a disintegrin and metalloprotease domain) family. Members of this family are membrane-anchored proteins structurally related to snake venom disintegrins, and have been implicated in a variety of biological processes involving cell-cell and cell-matrix interactions, including fertilization, muscle development, and neurogenesis. This member is a subunit of an integral sperm membrane glycoprotein called fertilin, which plays an important role in sperm-egg interactions. Burkin et al.(1997) used fluorescence in situ hybridization to map the FTNB gene to 8p11.2.

Contents

Each vial contains 5mg BSA, 0.9mg NaCl, 0.2mg Na₂HPO₄, 0.05mg Thimerosal, 0.05mg NaN₃.

Immunogen

A synthetic peptide corresponding to a sequence at the C-terminus of human ADAM2(701-715aa VLIAIMVKVNFQRKK).

Purification

Immunogen affinity purified.

Cross Reactivity

No cross reactivity with other proteins

Storage

At -20°C for one year. After reconstitution, at 4°C for one month. It can also be aliquotted and stored frozen at -20°C for a longer time. Avoid repeated freezing and thawing.

Sequence Similarities

Contains 1 disintegrin domain.

Anti-ADAM2 Antibody - Protein Information

Name ADAM2

Synonyms FTNB

Function

Sperm surface membrane protein that may be involved in sperm- egg plasma membrane adhesion and fusion during fertilization. Could have a direct role in sperm-zona binding or migration of sperm from the uterus into the oviduct. Interactions with egg membrane could be mediated via binding between its disintegrin-like domain to one or more integrins receptors on the egg. This is a non catalytic metalloprotease-like protein.

Cellular Location

Membrane; Single-pass type I membrane protein.

Tissue Location

Expressed specifically in spermatogenic cells in the seminiferous cells. Not detected

in fetal tissues

Anti-ADAM2 Antibody - Protocols

Provided below are standard protocols that you may find useful for product applications.

- [Western Blot](#)
- [Blocking Peptides](#)
- [Dot Blot](#)
- [Immunohistochemistry](#)
- [Immunofluorescence](#)
- [Immunoprecipitation](#)
- [Flow Cytometry](#)
- [Cell Culture](#)