

## Anti-ALDH2 Antibody Catalog # ABO11379

### Specification

#### Anti-ALDH2 Antibody - Product Information

Application **WB, IHC**  
Primary Accession [P05091](#)  
Host **Rabbit**  
Reactivity **Human, Rat**  
Clonality **Polyclonal**  
Format **Lyophilized**

#### Description

Rabbit IgG polyclonal antibody for Aldehyde dehydrogenase, mitochondrial(ALDH2) detection. Tested with WB, IHC-P in Human;Rat.

#### Reconstitution

Add 0.2ml of distilled water will yield a concentration of 500ug/ml.

#### Anti-ALDH2 Antibody - Additional Information

#### Gene ID 217

#### Other Names

Aldehyde dehydrogenase, mitochondrial, 1.2.1.3, ALDH class 2, ALDH-E2, ALDH1, ALDH2, ALDM

#### Calculated MW

56381 MW KDa

#### Application Details

Immunohistochemistry(Paraffin-embedded Section), 0.5-1 µg/ml, Human, Rat, By Heat<br>Western blot, 0.1-0.5 µg/ml, Rat, Human<br>

#### Subcellular Localization

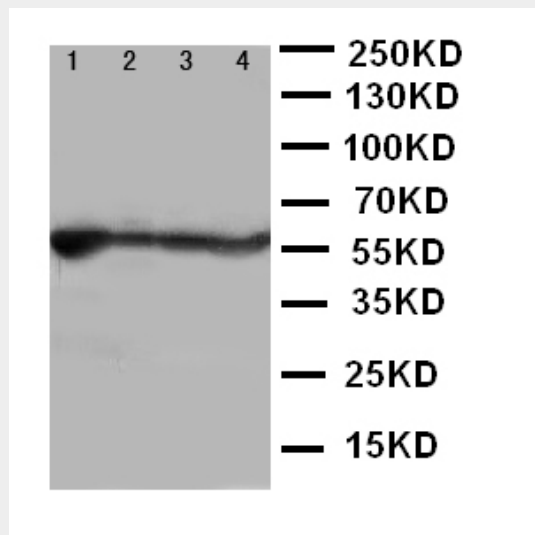
Mitochondrion matrix.

#### Protein Name

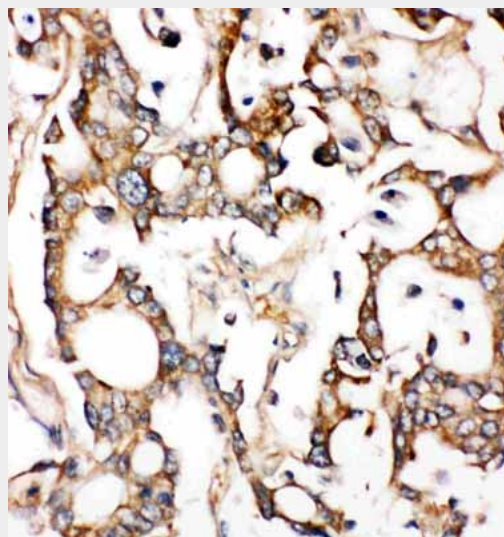
Aldehyde dehydrogenase, mitochondrial

#### Contents

Each vial contains 5mg BSA, 0.9mg NaCl, 0.2mg Na<sub>2</sub>HPO<sub>4</sub>, 0.05mg Thimerosal, 0.05mg NaN<sub>3</sub>.



Anti-ALDH2 antibody, ABO11379, Western blotting  
Lane 1: Rat Liver Tissue Lysate  
Lane 2: Rat Intestine Tissue Lysate  
Lane 3: Rat Lung Tissue Lysate  
Lane 4: Rat Kidney Tissue Lysate



Anti-ALDH2 antibody, ABO11379,  
IHC(P)IHC(P): Human Liver Cancer Tissue

#### Anti-ALDH2 Antibody - Background

ALDH2(Aldehyde Dehydrogenase 2 Family) is

**Immunogen**

A synthetic peptide corresponding to a sequence at the N-terminus of human ALDH2(18-33aa SAAATQAVPAPNQQPE), different from the related mouse sequence by two amino acids, and from the related rat sequence by one amino acid.

**Purification**

Immunogen affinity purified.

**Cross Reactivity**

No cross reactivity with other proteins

**Storage**

**At -20°C for one year. After r°Constitution, at 4°C for one month. It°Can also be aliquotted and stored frozen at -20°C for a longer time.Avoid repeated freezing and thawing.**

**Sequence Similarities**

Belongs to the aldehyde dehydrogenase family.

a human gene. The enzyme encoded by this gene belongs to the aldehyde dehydrogenase family of enzymes that catalyze the chemical transformation from acetaldehyde to acetic acid. Aldehyde dehydrogenase is the second enzyme of the major oxidative pathway of alcohol metabolism. Hsu et al.(1985) assigned the ALDH2 locus to chromosome 12 by means of a cDNA probe and Southern blot analysis of somatic cell hybrids. Using an unbiased proteomic search, Chen et al.(2008) identified mitochondrial ALDH2 as an enzyme whose activation correlated with reduced ischemic heart damage in rodent models. A high-throughput screen identified a small molecule activator of ALDH2, which they called Alda-1, that, when administered to rats before an ischemic event, reduced infarct size by 60%, most likely through its inhibitory effect on the formation of cytotoxic aldehydes.

**Anti-ALDH2 Antibody - Protein Information**

**Name** ALDH2

**Synonyms** ALDM

**Cellular Location**

Mitochondrion matrix.

**Anti-ALDH2 Antibody - Protocols**

Provided below are standard protocols that you may find useful for product applications.

- [Western Blot](#)
- [Blocking Peptides](#)
- [Dot Blot](#)
- [Immunohistochemistry](#)
- [Immunofluorescence](#)
- [Immunoprecipitation](#)
- [Flow Cytometry](#)
- [Cell Culture](#)