

Anti-complement C5a Antibody Catalog # ABO11616

Specification

Anti-complement C5a Antibody - Product Information

Application **IHC, WB**
Primary Accession [P08650](#)
Host **Rabbit**
Reactivity **Mouse, Rat**
Clonality **Polyclonal**
Format **Lyophilized**
Description
Rabbit IgG polyclonal antibody for Complement C5(C5) detection. Tested with WB, IHC-P in Mouse;Rat.

Reconstitution

Add 0.2ml of distilled water will yield a concentration of 500ug/ml.

Anti-complement C5a Antibody - Additional Information

Other Names

Complement C5, C5a anaphylatoxin, C5

Calculated MW

8981 MW KDa

Application Details

Immunohistochemistry(Paraffin-embedded Section), 0.5-1 µg/ml, Mouse, Rat, By Heat
Western blot, 0.1-0.5 µg/ml, Mouse, Rat

Subcellular Localization

Secreted.

Protein Name

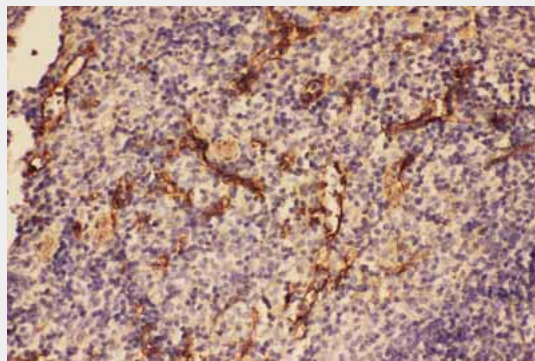
Complement C5

Contents

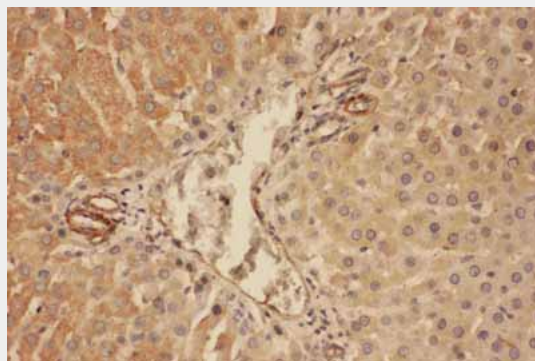
Each vial contains 5mg BSA, 0.9mg NaCl, 0.2mg Na₂HPO₄, 0.05mg Thimerosal, 0.05mg NaN₃.

Immunogen

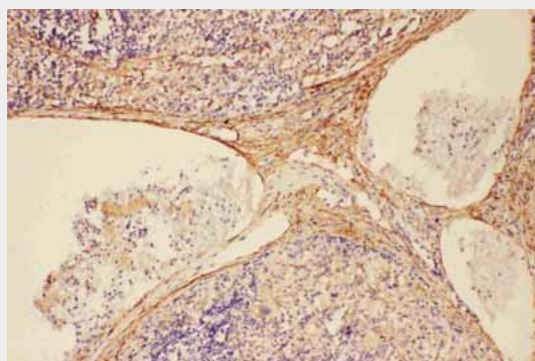
A synthetic peptide corresponding to a sequence at the N-terminus of rat



Anti-C5/C5a antibody, ABO11616,
IHC(P)IHC(P): Mouse Spleen Tissue



Anti-C5/C5a antibody, ABO11616,
IHC(P)IHC(P): Rat Liver Tissue



Anti-C5/C5a antibody, ABO11616,
IHC(P)IHC(P): Rat Spleen Tissue

C5a(1-18aa DLQLLHQKVEEQAAKYKH), different from the related mouse sequence by four amino acids.

Purification

Immunogen affinity purified.

Cross Reactivity

No cross reactivity with other proteins

Storage

At -20°C for one year. After reconstitution, at 4°C for one month. It can also be aliquotted and stored frozen at -20°C for a longer time. Avoid repeated freezing and thawing.

Anti-complement C5a Antibody - Protein Information

Name C5

Function

Derived from proteolytic degradation of complement C5, C5 anaphylatoxin is a mediator of local inflammatory process. Binding to the receptor C5AR1 induces a variety of responses including intracellular calcium release, contraction of smooth muscle, increased vascular permeability, and histamine release from mast cells and basophilic leukocytes. C5a is also a potent chemokine which stimulates the locomotion of polymorphonuclear leukocytes and directs their migration toward sites of inflammation.

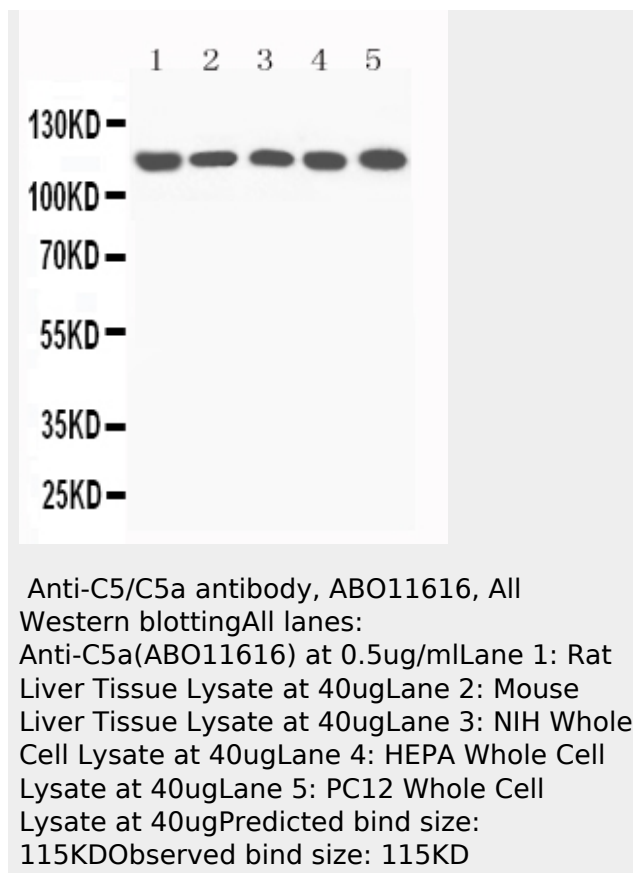
Cellular Location

Secreted.

Anti-complement C5a Antibody - Protocols

Provided below are standard protocols that you may find useful for product applications.

- [Western Blot](#)
- [Blocking Peptides](#)
- [Dot Blot](#)
- [Immunohistochemistry](#)
- [Immunofluorescence](#)



Anti-complement C5a Antibody - Background

C5a is a protein fragment released from complement component C5. This gene is mapped to 9q33.2. The protein encoded by this gene is the fifth component of complement, which plays an important role in inflammatory and cell killing processes. This protein is comprised of alpha and beta polypeptide chains that are linked by a disulfide bridge. An activation peptide, C5a, which is an anaphylatoxin that possesses potent spasmogenic and chemotactic activity, is derived from the alpha polypeptide via cleavage with a convertase. The C5b macromolecular cleavage product can form a complex with the C6 complement component, and this complex is the basis for formation of the membrane attack complex, which includes additional complement components. Mutations in this gene cause complement component 5 deficiency, a disease where patients show a propensity for severe recurrent infections. Defects in this gene have also been linked to susceptibility to liver fibrosis and to rheumatoid arthritis.

- [Immunoprecipitation](#)
- [Flow Cytometry](#)
- [Cell Culture](#)