

## Anti-GCLC Picoband Antibody

Catalog # ABO11892

### Specification

#### Anti-GCLC Picoband Antibody - Product Information

Application **WB, IHC**  
Primary Accession [P48506](#)  
Host **Rabbit**  
Reactivity **Human, Rat**  
Clonality **Polyclonal**  
Format **Lyophilized**

#### Description

Rabbit IgG polyclonal antibody for Glutamate--cysteine ligase catalytic subunit(GCLC) detection. Tested with WB, IHC-P in Human;Rat.

#### Reconstitution

Add 0.2ml of distilled water will yield a concentration of 500ug/ml.

#### Anti-GCLC Picoband Antibody - Additional Information

Gene ID 2729

#### Other Names

Glutamate--cysteine ligase catalytic subunit, 6.3.2.2, GCS heavy chain, Gamma-ECS, Gamma-glutamylcysteine synthetase, GCLC, GLCL, GLCLC

#### Calculated MW

72766 MW KDa

#### Application Details

Immunohistochemistry(Paraffin-embedded Section), 0.5-1 µg/ml, Human, By Heat<br>Western blot, 0.1-0.5 µg/ml, Human, Rat<br>

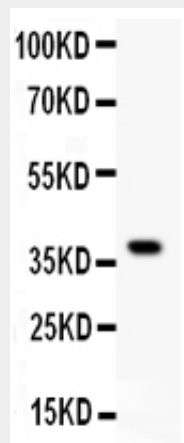
#### Protein Name

Glutamate--cysteine ligase catalytic subunit

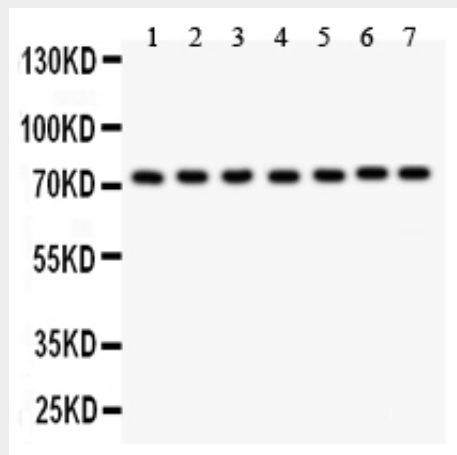
#### Contents

Each vial contains 5mg BSA, 0.9mg NaCl, 0.2mg Na<sub>2</sub>HPO<sub>4</sub>, 0.05mg Na<sub>3</sub>N.

#### Immunogen



Anti- GCLC antibody, ABO11892, Western blottingAll lanes: Anti GCLC (ABO11892) at 0.5ug/mlWB: Recombinant Human GCLC Protein 0.5ngPredicted bind size: 40KDObserved bind size: 40KD



Anti- GCLC antibody, ABO11892, Western blottingAll lanes: Anti GCLC (ABO11892) at 0.5ug/mlLane 1: Rat Brain Tissue Lysate at 50ugLane 2: Rat Cardiac Muscle Tissue Lysate at 50ugLane 3: HELA Cell Lysate at 40ugLane 4: PC-12 Whole Cell Lysate at 40ugLane 5: NRK Whole Cell Lysate at 40ugLane 6: HEPA Whole Cell Lysate at 40ugLane 7: A549 Whole Cell Lysate at 40ugPredicted bind size: 72KDObserved bind size: 72KD

E.coli-derived human GCLC recombinant protein (Position: E437-N637). Human GCLC shares 94% amino acid (aa) sequence identity with both mouse and rat GCLC.

#### Purification

Immunogen affinity purified.

#### Cross Reactivity

No cross reactivity with other proteins

#### Storage

**At -20°C for one year. After reconstitution, at 4°C for one month. It can also be aliquotted and stored frozen at -20°C for a longer time. Avoid repeated freezing and thawing.**

#### Sequence Similarities

Belongs to the glutamate--cysteine ligase type 3 family.

#### Anti-GCLC Picoband Antibody - Protein Information

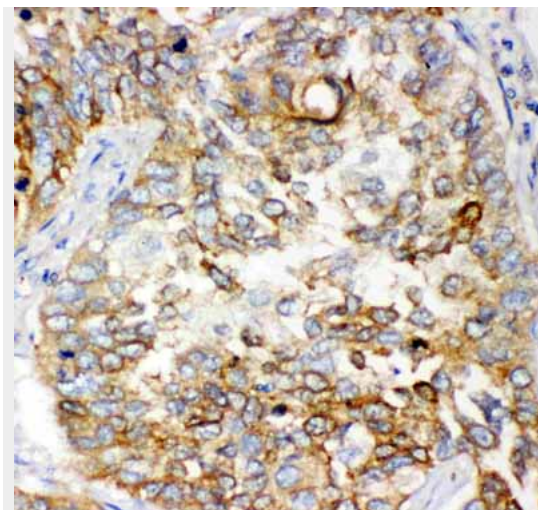
**Name** GCLC

**Synonyms** GLCL, GLCLC

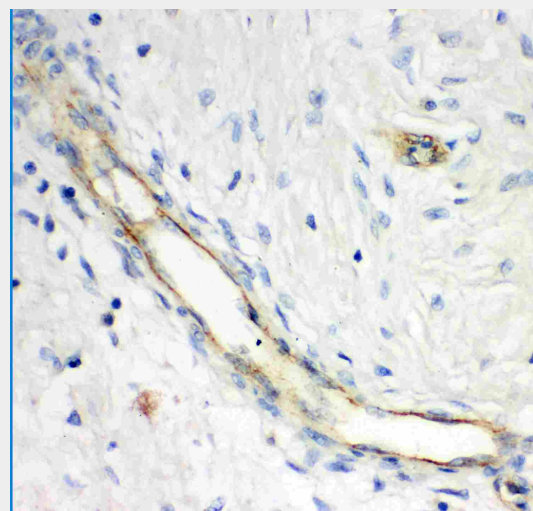
#### Anti-GCLC Picoband Antibody - Protocols

Provided below are standard protocols that you may find useful for product applications.

- [Western Blot](#)
- [Blocking Peptides](#)
- [Dot Blot](#)
- [Immunohistochemistry](#)
- [Immunofluorescence](#)
- [Immunoprecipitation](#)
- [Flow Cytometry](#)
- [Cell Culture](#)



Anti- GCLC antibody, ABO11892,  
IHC(P)IHC(P): Human Lung Cancer Tissue



Anti- GCLC antibody, ABO11892,  
IHC(P)IHC(P): Human Mammary Cancer  
Tissue

#### Anti-GCLC Picoband Antibody - Background

GCLC, also named Glutamate--cysteine ligase catalytic subunit, is an enzyme that in humans is encoded by the GCLC gene. Glutamate-cysteine ligase, also known as gamma-glutamylcysteine synthetase is the first rate limiting enzyme of glutathione synthesis. The enzyme consists of two subunits, a heavy catalytic subunit and a light regulatory subunit. The gene encoding the catalytic subunit encodes a protein of 367 amino acids with a calculated molecular weight of 72.773 kDa and maps to chromosome

6p12.1. Deficiency of gamma-glutamylcysteine synthetase in human is associated with enzymopathic hemolytic anemia.