

Glutaredoxin 1 Antibody (Clone 28C3)
Mouse Monoclonal Antibody
Catalog # ABV11173

Specification

Glutaredoxin 1 Antibody (Clone 28C3) - Product Information

Application	IP
Primary Accession	P35754
Reactivity	Human
Host	Mouse
Clonality	Monoclonal
Isotype	Mouse IgG1

Glutaredoxin 1 Antibody (Clone 28C3) - Additional Information

Gene ID 2745

Positive Control **WB and IP: Jurkat cell lysate**

Application & Usage **IP: 1-2 µl, ELISA.**

Other Names

Thioltransferase-1, GLRX, GRX

Target/Specificity

Glutaredoxin 1

Antibody Form

Liquid

Appearance

Colorless liquid

Formulation

100 µl of antibody in HEPES with 0.15 M NaCl, 0.01 % BSA, 0.03 % sodium azide, and 50 % glycerol

Handling

The antibody solution should be gently mixed before use.

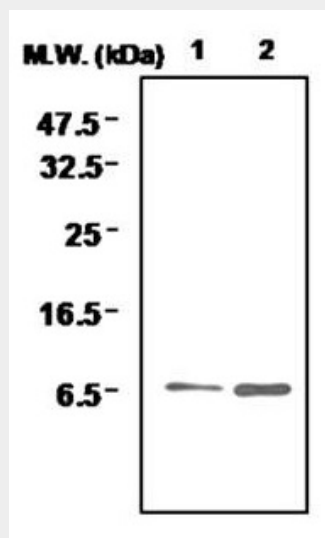
Reconstitution & Storage

-20 °C

Background Descriptions

Precautions

Glutaredoxin 1 Antibody (Clone 28C3) is for



IP analysis of Jurkat cell lysates. Lane 1: Input, Lane 2: Precipitated sample

Glutaredoxin 1 Antibody (Clone 28C3) - Background

Glutaredoxin (Grx), also known as thiol transferase, is a small heat-stable oxidoreductase. Grxs form part of the glutaredoxin system, comprising NADPH, GSH and glutathione reductase, which transfers electrons from NADPH to glutaredoxins via GSH. First recovered in E.coli as GSH-dependent hydrogen donors for ribonucleotide reductase, Grx catalyzes GSH-disulfide oxido-reductase via two redox-active cysteine residues. The active sequence (Cys-Pro-Tyr-Cys) is conserved in a variety of species. The 12 kDa dithiol protein has a role in reduction of mixed disulfides in cells exposed to oxidative stress. Has a glutathione-disulfide oxidoreductase activity in the presence of NADPH and glutathione reductase. Reduces low molecular weight disulfides and proteins.

research use only and not for use in diagnostic or therapeutic procedures.

Glutaredoxin 1 Antibody (Clone 28C3) - Protein Information

Name GLRX

Synonyms GRX

Function

Has a glutathione-disulfide oxidoreductase activity in the presence of NADPH and glutathione reductase. Reduces low molecular weight disulfides and proteins.

Cellular Location

Cytoplasm.

Glutaredoxin 1 Antibody (Clone 28C3) - Protocols

Provided below are standard protocols that you may find useful for product applications.

- [Western Blot](#)
- [Blocking Peptides](#)
- [Dot Blot](#)
- [Immunohistochemistry](#)
- [Immunofluorescence](#)
- [Immunoprecipitation](#)
- [Flow Cytometry](#)
- [Cell Culture](#)