

## LGR5 Antibody

**Purified Rabbit Polyclonal Antibody**  
**Catalog # ABV11666**

### Specification

#### LGR5 Antibody - Product Information

Application	<b>WB, FC</b>
Primary Accession	<a href="#">075473</a>
Reactivity	<b>Human, Mouse, Rat</b>
Host	<b>Rabbit</b>
Clonality	<b>Polyclonal</b>
Isotype	<b>Rabbit IgG</b>
Calculated MW	<b>99998</b>

#### LGR5 Antibody - Additional Information

**Gene ID 8549**

#### Other Names

Leucine-rich repeat-containing G-protein coupled receptor 5, G-protein coupled receptor 49, G-protein coupled receptor 67, G-protein coupled receptor HG38, GPR49, GPR67

#### Target/Specificity

LGR5

#### Formulation

100 µl antibody supplied in PBS with 0.09% (W/V) sodium azide.

#### Handling

The antibody solution should be gently mixed before use.

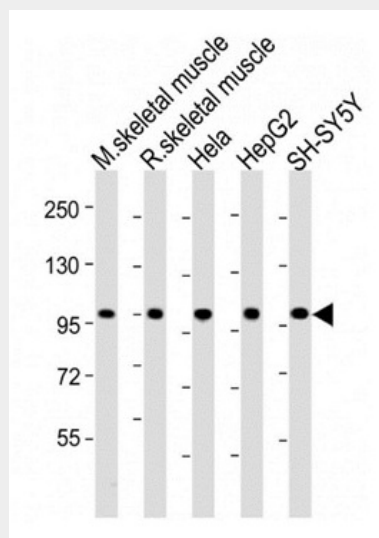
#### Background Descriptions

#### Precautions

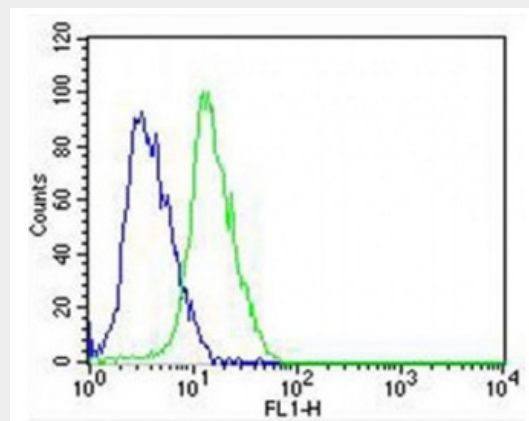
LGR5 Antibody is for research use only and not for use in diagnostic or therapeutic procedures.

#### LGR5 Antibody - Protein Information

**Name** LGR5



Western blot analysis in M.skeletal muscle lysate, R.skeletal muscle lysate, Hela cell lysates, HepG2 cell lysate and SH-SY5Y cell lysates.



Overlay histogram showing SH-SY5Y cells stained with anti-LGR5 antibody(green). Isotype control antibody(blue) was rabbit IgG used under the same conditions. Acquisition of >10000 events was performed.

#### LGR5 Antibody - Background

Receptor for R-spondins that potentiates the canonical Wnt signaling pathway and acts as a

**Synonyms** GPR49, GPR67**Function**

Receptor for R-spondins that potentiates the canonical Wnt signaling pathway and acts as a stem cell marker of the intestinal epithelium and the hair follicle. Upon binding to R-spondins (RSPO1, RSPO2, RSPO3 or RSPO4), associates with phosphorylated LRP6 and frizzled receptors that are activated by extracellular Wnt receptors, triggering the canonical Wnt signaling pathway to increase expression of target genes. In contrast to classical G-protein coupled receptors, does not activate heterotrimeric G-proteins to transduce the signal. Involved in the development and/or maintenance of the adult intestinal stem cells during postembryonic development.

**Cellular Location**

Cell membrane; Multi-pass membrane protein. Golgi apparatus, trans-Golgi network membrane; Multi-pass membrane protein Note=Rapidly and constitutively internalized to the trans-Golgi network at steady state. Internalization to the trans-Golgi network may be the result of phosphorylation at Ser-861 and Ser-864; however, the phosphorylation event has not been proven (PubMed:23439653)

**Tissue Location**

Expressed in skeletal muscle, placenta, spinal cord, and various region of brain. Expressed at the base of crypts in colonic and small mucosa stem cells. In premalignant cancer expression is not restricted to the crypt base. Overexpressed in cancers of the ovary, colon and liver.

stem cell marker of the intestinal epithelium and the hair follicle. Upon binding to R-spondins (RSPO1, RSPO2, RSPO3 or RSPO4), associates with phosphorylated LRP6 and frizzled receptors that are activated by extracellular Wnt receptors, triggering the canonical Wnt signaling pathway to increase expression of target genes. In contrast to classical G-protein coupled receptors, does not activate heterotrimeric G-proteins to transduce the signal. Involved in the development and/or maintenance of the adult intestinal stem cells during postembryonic development.

**LGR5 Antibody - Protocols**

Provided below are standard protocols that you may find useful for product applications.

- [Western Blot](#)
- [Blocking Peptides](#)
- [Dot Blot](#)
- [Immunohistochemistry](#)
- [Immunofluorescence](#)
- [Immunoprecipitation](#)
- [Flow Cytometry](#)
- [Cell Culture](#)