

CD5 Antibody
Rabbit Monoclonal Antibody (Mab)
Catalog # AD80221

Specification

CD5 Antibody - Product info

Application	IHC
Primary Accession	P06127
Reactivity	Human
Host	Rabbit
Clonality	Monoclonal
Isotype	IgG
Calculated MW	54578

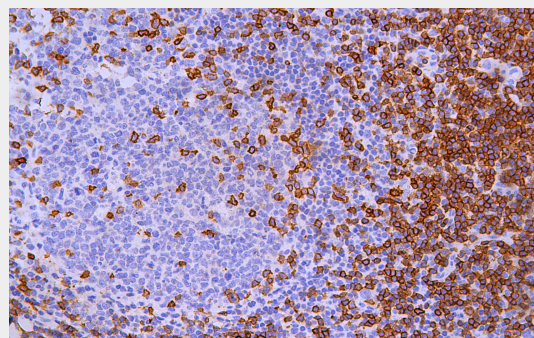
CD5 Antibody - Additional info

Gene ID	921
Gene Name	CD5
Other Names	
T-cell surface glycoprotein CD5, Lymphocyte antigen T1/Leu-1, CD5, CD5, LEU1	

Dilution

IHC~~Ready-to-use

Storage	Maintain refrigerated at 2-8°C for up to 2 weeks. For long term storage store at -20°C in small aliquots to prevent freeze-thaw cycles.
Precautions	CD5 Antibody is for research use only and not for use in diagnostic or therapeutic procedures.



Immunohistochemical analysis of paraffin-embedded human tonsil tissue using AD80221 performed on the Abcarta® FAIP-30 Fully automated IHC platform. Tissue was fixed with formaldehyde at room temperature, antigen retrieval was by heat mediation with a EDTA buffer (pH9.0). Samples were incubated with primary antibody(Ready-to-use) for 15 min at room temperature. AmpSee™ Detection Systems□Abcepta:AR005□ was used as the secondary antibody.

CD5 Antibody - Protein Information

Name CD5

Synonyms	LEU1
Function	May act as a receptor in

Cellular Location

**regulating T-cell proliferation.
Cell membrane;
Single-pass type I membrane protein**

CD5 Antibody - Protocols

Provided below are standard protocols that you may find useful for product applications.

- [Western Blot](#)
- [Blocking Peptides](#)
- [Dot Blot](#)
- [Immunohistochemistry](#)
- [Immunofluorescence](#)
- [Immunoprecipitation](#)
- [Flow Cytometry](#)
- [Cell Culture](#)