

CK8&18 Antibody
Rabbit Monoclonal Antibody (Mab)
Catalog # AD80355

Specification

CK8&18 Antibody - Product info

Application	IHC
Primary Accession	P05787
Reactivity	Human
Host	Rabbit
Clonality	Monoclonal
Isotype	IgG
Calculated MW	53704

CK8&18 Antibody - Additional info

Gene ID	3856
Gene Name	KRT8
Other Names	
Keratin, type II cytoskeletal 8, Cytokeratin-8, CK-8, Keratin-8, K8, Type-II keratin Kb8, KRT8, CYK8	

Dilution

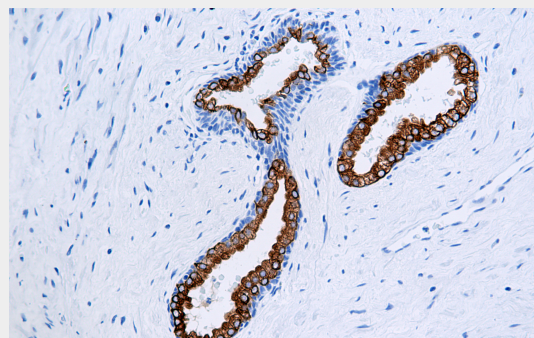
IHC~~Ready-to-use

Storage	Maintain refrigerated at 2-8°C for up to 2 weeks. For long term storage store at -20°C in small aliquots to prevent freeze-thaw cycles.
Precautions	CK8&18 Antibody is for research use only and not for use in diagnostic or therapeutic procedures.

CK8&18 Antibody - Protein Information

Name KRT8

Synonyms	CYK8
Function	Together with



Immunohistochemical analysis of paraffin-embedded prostatic cancer tissue using AD80355 performed on the Abcarta® FAIP-30 Fully automated IHC platform. Tissue was fixed with formaldehyde at room temperature, antigen retrieval was by heat mediation with a Citrate buffer (pH6.0). Samples were incubated with primary antibody (Ready-to-use) for 15 min at room temperature. AmpSee™ Detection Systems □ Abcepta:AR005 □ was used as the secondary antibody.

Cellular Location	KRT19, helps to link the contractile apparatus to dystrophin at the costameres of striated muscle. Cytoplasm. Nucleus, nucleoplasm
Tissue Location	Nucleus matrix Observed in muscle fibers accumulating in the costameres of myoplasm at the sarcolemma membrane in structures that contain dystrophin and spectrin. Expressed in gingival mucosa and hard palate of the oral cavity.

CK8&18 Antibody - Protocols

Provided below are standard protocols that you may find useful for product applications.

- [Western Blot](#)
- [Blocking Peptides](#)
- [Dot Blot](#)
- [Immunohistochemistry](#)
- [Immunofluorescence](#)
- [Immunoprecipitation](#)
- [Flow Cytometry](#)
- [Cell Culture](#)