

Goat Anti-Choline acetyltransferase Antibody

Peptide-affinity purified goat antibody
Catalog # AF1238a

Specification

Goat Anti-Choline acetyltransferase Antibody - Product Information

Application	WB
Primary Accession	P28329
Other Accession	NP_001136405.1103
Reactivity	Human
Predicted	Pig, Dog, Cow
Host	Goat
Clonality	Polyclonal
Concentration	100ug/200ul
Isotype	IgG
Calculated MW	82536

Goat Anti-Choline acetyltransferase Antibody - Additional Information

Gene ID 1103

Other Names

Choline O-acetyltransferase, CHOACTase, ChAT, Choline acetylase, 2.3.1.6, CHAT

Format

0.5 mg IgG/ml in Tris saline (20mM Tris pH7.3, 150mM NaCl), 0.02% sodium azide, with 0.5% bovine serum albumin

Storage

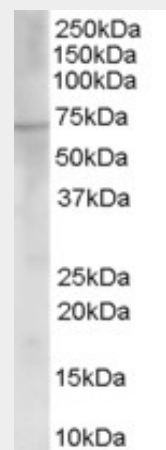
Maintain refrigerated at 2-8°C for up to 6 months. For long term storage store at -20°C in small aliquots to prevent freeze-thaw cycles.

Precautions

Goat Anti-Choline acetyltransferase Antibody is for research use only and not for use in diagnostic or therapeutic procedures.

Goat Anti-Choline acetyltransferase Antibody - Protein Information

Name CHAT



AF1238a (0.03 µg/ml) staining of Human Placenta lysate (35 µg protein in RIPA buffer). Primary incubation was 1 hour. Detected by chemiluminescence.

Goat Anti-Choline acetyltransferase Antibody - Background

This gene encodes an enzyme which catalyzes the biosynthesis of the neurotransmitter acetylcholine. This gene product is a characteristic feature of cholinergic neurons, and changes in these neurons may explain some of the symptoms of Alzheimer's disease. Polymorphisms in this gene have been associated with Alzheimer's disease and mild cognitive impairment. Mutations in this gene are associated with congenital myasthenic syndrome associated with episodic apnea. Multiple transcript variants encoding different isoforms have been found for this gene, and some of these variants have been shown to encode more than one isoform.

Goat Anti-Choline acetyltransferase Antibody - References

Variation at the NFATC2 Locus Increases the Risk of Thiazolinedione-Induced Edema in the Diabetes REduction Assessment with

Function

Catalyzes the reversible synthesis of acetylcholine (ACh) from acetyl CoA and choline at cholinergic synapses.

Goat Anti-Choline acetyltransferase Antibody - Protocols

Provided below are standard protocols that you may find useful for product applications.

- [Western Blot](#)
- [Blocking Peptides](#)
- [Dot Blot](#)
- [Immunohistochemistry](#)
- [Immunofluorescence](#)
- [Immunoprecipitation](#)
- [Flow Cytometry](#)
- [Cell Culture](#)

ramipril and rosiglitazone Medication (DREAM) Study. Bailey SD, et al. Diabetes Care, 2010 Jul 13. PMID 20628086.

Physiogenomic analysis of statin-treated patients: domain-specific counter effects within the ACACB gene on low-density lipoprotein cholesterol? Ruaño G, et al.

Pharmacogenomics, 2010 Jul. PMID 20602615.

Redesign of cosubstrate specificity and identification of important residues for substrate binding to hChAT. Green KD, et al. Biochemistry, 2010 Jul 27. PMID 20560540.

Genetic pathway-based hierarchical clustering analysis of older adults with cognitive complaints and amnesic mild cognitive impairment using clinical and neuroimaging phenotypes. Sloan CD, et al. Am J Med Genet B Neuropsychiatr Genet, 2010 Jul. PMID 20468060.

Replication and extension of association of choline acetyltransferase with nicotine dependence in European and African American smokers. Wei J, et al. Hum Genet, 2010 Jun. PMID 20383528.