

## AFP (Alpha Fetoprotein) (Hepatocellular/Germ Cell Tumor Marker) Antibody - With BSA and Azide

Mouse Monoclonal Antibody [Clone SPM334 ]  
Catalog # AH10423

### Specification

#### AFP (Alpha Fetoprotein) (Hepatocellular/Germ Cell Tumor Marker) Antibody - With BSA and Azide - Product Information

Application	,14,3,4,
Primary Accession	<a href="#">P02771</a>
Other Accession	<a href="#">174</a> , <a href="#">518808</a>
Reactivity	Human, Monkey, Pig, Dog
Host	Mouse
Clonality	Monoclonal
Isotype	Mouse / IgG2a, kappa
Calculated MW	70kDa KDa

#### AFP (Alpha Fetoprotein) (Hepatocellular/Germ Cell Tumor Marker) Antibody - With BSA and Azide - Additional Information

Gene ID 174

#### Other Names

Alpha-fetoprotein, Alpha-1-fetoprotein, Alpha-fetoglobulin, AFP, HPAFP

#### Format

200ug/ml of Ab purified from Bioreactor Concentrate by Protein A/G. Prepared in 10mM PBS with 0.05% BSA & 0.05% azide. Also available WITHOUT BSA & azide at 1.0mg/ml.

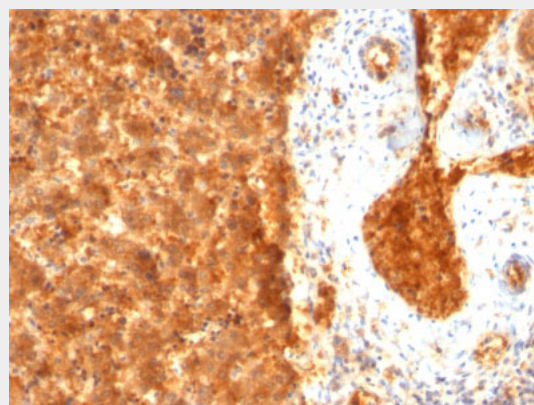
#### Storage

Store at 2 to 8°C. Antibody is stable for 24 months.

#### Precautions

AFP (Alpha Fetoprotein) (Hepatocellular/Germ Cell Tumor Marker) Antibody - With BSA and Azide is for research use only and not for use in diagnostic or therapeutic procedures.

#### AFP (Alpha Fetoprotein) (Hepatocellular/Germ Cell Tumor Marker) Antibody - With BSA and Azide - Protein Information



Formalin-fixed, paraffin-embedded human Fetal Liver stained with AFP Monoclonal Antibody (SPM334).

#### AFP (Alpha Fetoprotein) (Hepatocellular/Germ Cell Tumor Marker) Antibody - With BSA and Azide - Background

It recognizes an oncofetal glycoprotein with a single chain of 70kDa, which is identified as alpha fetoprotein (AFP). This MAb is highly specific to AFP and shows no cross-reaction with other oncofetal antigens or serum albumin. AFP is normally synthesized in the liver, intestinal tract, and yolk sac of the fetus. Antibody to AFP has been shown to be useful in detecting hepatocellular carcinomas (HCC) and germ cell neoplasms, especially yolk sac tumors.

#### AFP (Alpha Fetoprotein) (Hepatocellular/Germ Cell Tumor Marker) Antibody - With BSA and Azide - References

Yazova AK; Goussev AI; Poltoranina VS; Yakimenko EF. Human alpha-fetoprotein epitopes as revealed by monoclonal antibodies. Immunology Letters, 1990 Sep, 25(4):325-30

**Name** AFP**Synonyms** HPAFP**Function**

Binds copper, nickel, and fatty acids as well as, and bilirubin less well than, serum albumin. Only a small percentage (less than 2%) of the human AFP shows estrogen-binding properties.

**Cellular Location**

Secreted.

**Tissue Location**

Plasma. Synthesized by the fetal liver and yolk sac

**AFP (Alpha Fetoprotein)**  
**(Hepatocellular/Germ Cell Tumor Marker)**  
**Antibody - With BSA and Azide - Protocols**

Provided below are standard protocols that you may find useful for product applications.

- [Western Blot](#)
- [Blocking Peptides](#)
- [Dot Blot](#)
- [Immunohistochemistry](#)
- [Immunofluorescence](#)
- [Immunoprecipitation](#)
- [Flow Cytometry](#)
- [Cell Culture](#)