

Anti-Chromogranin A / CHGA Antibody
Recombinant Rabbit Monoclonal Antibody
Catalog # AH13111

Specification

Anti-Chromogranin A / CHGA Antibody - Product Information

Application	,14,3,4,
Primary Accession	P10645
Other Accession	150793
Reactivity	Human
Host	Rabbit
Clonality	Monoclonal
Isotype	Rabbit / IgG, kappa
Calculated MW	50688

Anti-Chromogranin A / CHGA Antibody - Additional Information

Gene ID 1113

Other Names

Beta-Granin; CGA; CHGA; Chromogranin A
Parathyroid Secretory Protein 1; ER-37;
Pancreastatin; Parastatin; Parathyroid
Secretory Protein 1; Pituitary Secretory
Protein I; SP-I; Vasostatin I or II

Format

200ug/ml of Ab purified by Protein A/G.
Prepared in 10mM PBS with 0.05% BSA &
0.05% azide. Also available WITHOUT BSA &
azide at 1.0mg/ml.

Storage

Store at 2 to 8°C. Antibody is stable for 24
months.

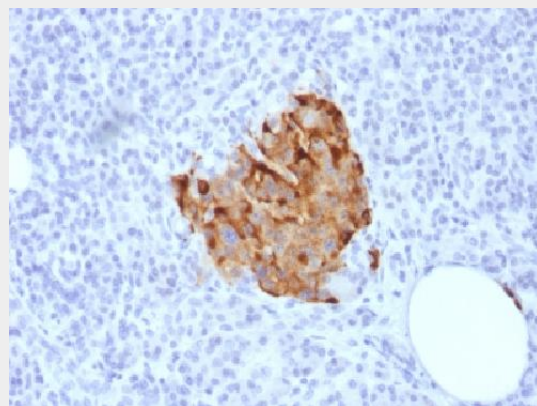
Precautions

Anti-Chromogranin A / CHGA Antibody is for
research use only and not for use in
diagnostic or therapeutic procedures.

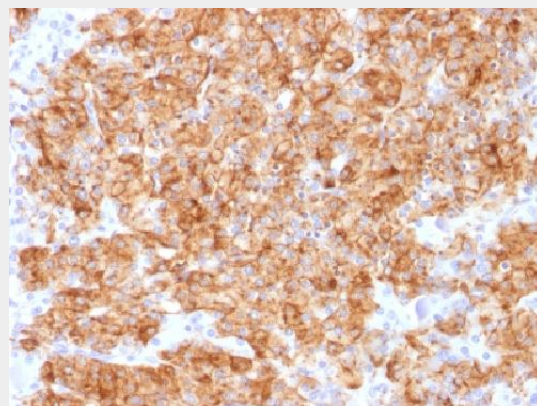
Anti-Chromogranin A / CHGA Antibody - Protein Information

Name CHGA

Function



Formalin-fixed, paraffin-embedded human
Pancreas stained with Chromogranin A
Recombinant Rabbit Monoclonal Antibody
(CHGA/1773R)



Formalin-fixed, paraffin-embedded human
Parathyroid stained with Chromogranin A
Recombinant Rabbit Monoclonal Antibody
(CHGA/1773R)

Anti-Chromogranin A / CHGA Antibody - Background

Chromogranin A is present in neuroendocrine
cells throughout the body, including the
neuroendocrine cells of the large and small
intestine, adrenal medulla and pancreatic
islets. It is an excellent marker for carcinoid
tumors, pheochromocytomas, paragangliomas,

[Pancreastatin]: Strongly inhibits glucose induced insulin release from the pancreas.
[Serpinin]: Regulates granule biogenesis in endocrine cells by up-regulating the transcription of protease nexin 1 (SERPINE2) via a cAMP-PKA-SP1 pathway. This leads to inhibition of granule protein degradation in the Golgi complex which in turn promotes granule formation.

Cellular Location

[Serpinin]: Secreted
{ECO:0000250|UniProtKB:P26339}.
Cytoplasmic vesicle, secretory vesicle
{ECO:0000250|UniProtKB:P26339}.
Note=Pyroglutaminated serpinin localizes to secretory vesicle.
{ECO:0000250|UniProtKB:P26339}

Tissue Location

GE-25 is found in the brain.

and other neuroendocrine tumors.
Co-expression of chromogranin A and neuron specific enolase (NSE) is common in neuroendocrine neoplasms. Reportedly, co-expression of certain keratins and chromogranin indicates neuroendocrine lineage. The presence of strong anti-chromogranin staining and absence of anti-keratin staining should raise the possibility of paraganglioma. The co-expression of chromogranin and NSE is typical of neuroendocrine neoplasms. Most pituitary adenomas and prolactinomas readily express chromogranin.

Anti-Chromogranin A / CHGA Antibody - Protocols

Provided below are standard protocols that you may find useful for product applications.

- [Western Blot](#)
- [Blocking Peptides](#)
- [Dot Blot](#)
- [Immunohistochemistry](#)
- [Immunofluorescence](#)
- [Immunoprecipitation](#)
- [Flow Cytometry](#)
- [Cell Culture](#)