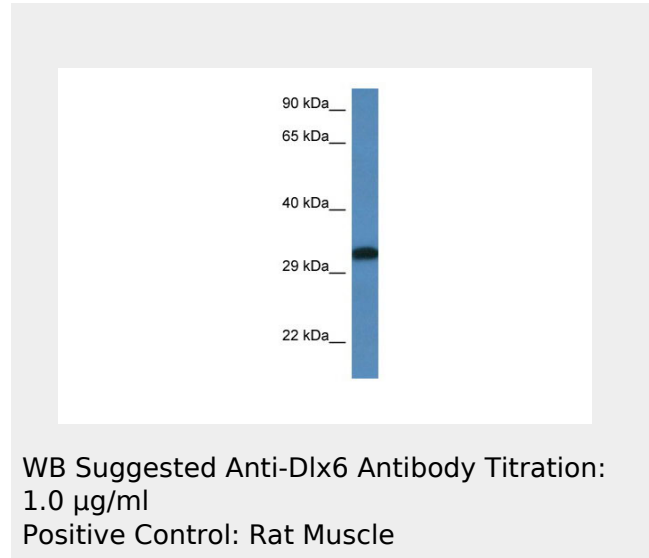


**Dlx6 antibody - C-terminal region**  
**Rabbit Polyclonal Antibody**  
**Catalog # AI10875**

**Specification**

**Dlx6 antibody - C-terminal region - Product Information**

Application	<b>WB</b>
Other Accession	<a href="#">XM_575377</a> , <a href="#">XP_575377</a>
Reactivity	<b>Human, Mouse, Rat, Rabbit, Zebrafish, Horse, Bovine, Dog</b>
Predicted	<b>Mouse, Rabbit, Zebrafish, Chicken, Bovine</b>
Host	<b>Rabbit</b>
Clonality	<b>Polyclonal</b>
Calculated MW	<b>30kDa KDa</b>



**Dlx6 antibody - C-terminal region - Additional Information**

Alias Symbol **RGD1561539**  
**Format**  
Liquid. Purified antibody supplied in 1x PBS buffer with 0.09% (w/v) sodium azide and 2% sucrose.

**Reconstitution & Storage**  
Add 50 µl of distilled water. Final anti-Dlx6 antibody concentration is 1 mg/ml in PBS buffer with 2% sucrose. For longer periods of storage, store at 20°C. Avoid repeat freeze-thaw cycles.

**Precautions**  
Dlx6 antibody - C-terminal region is for research use only and not for use in diagnostic or therapeutic procedures.

**Dlx6 antibody - C-terminal region - Protein Information**

**Dlx6 antibody - C-terminal region - Protocols**

Provided below are standard protocols that you may find useful for product applications.

- [Western Blot](#)
- [Blocking Peptides](#)
- [Dot Blot](#)
- [Immunohistochemistry](#)
- [Immunofluorescence](#)
- [Immunoprecipitation](#)
- [Flow Cytometry](#)
- [Cell Culture](#)