

Thrb antibody - N-terminal region
Rabbit Polyclonal Antibody
Catalog # AI11091

Specification

Thrb antibody - N-terminal region - Product Information

Application **CHIP, WB**
Primary Accession [P37242](#)
Other Accession [NM_009380](#),
[NP_033406](#)
Reactivity **Mouse, Rat**
Predicted **Mouse, Rat**
Host **Rabbit**
Clonality **Polyclonal**
Calculated MW **54 KDa**

Thrb antibody - N-terminal region - Additional Information

Gene ID 21834

Alias Symbol **MGC141269,
MGC141270,
Nr1a2, T3R[b],
T3Rbeta, Thrb1,
Thrb2, c-erbAbeta**

Other Names

Thyroid hormone receptor beta, Nuclear receptor subfamily 1 group A member 2, c-erbA-2, c-erbA-beta, Thrb, Erba2, Nr1a2

Format

Liquid. Purified antibody supplied in 1x PBS buffer with 0.09% (w/v) sodium azide and 2% sucrose.

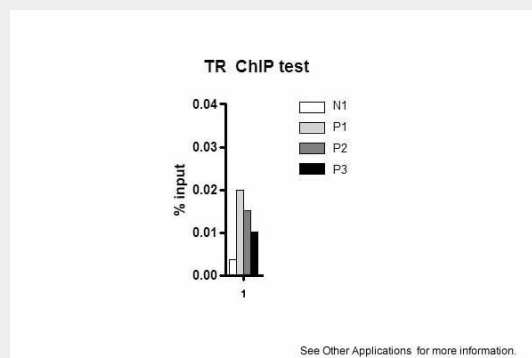
Reconstitution & Storage

Add 50 ul of distilled water. Final anti-Thrb antibody concentration is 1 mg/ml in PBS buffer with 2% sucrose. For longer periods of storage, store at 20°C. Avoid repeat freeze-thaw cycles.

Precautions

Thrb antibody - N-terminal region is for research use only and not for use in diagnostic or therapeutic procedures.

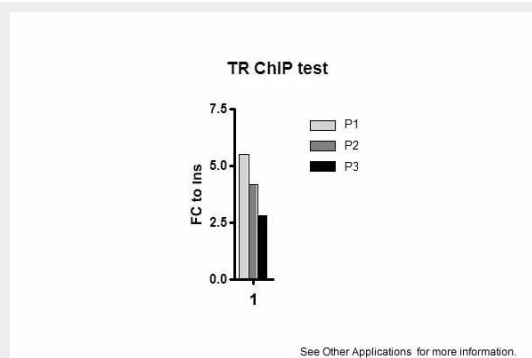
Thrb antibody - N-terminal region - Protein



Application: ChIP

Sample Type: mouse liver tissue Chromatin
Used: 100ug tissue Antibody Used: 10ug

Submitted by: Joanna DiSpirito University of Pennsylvania



Application: ChIP

Sample Type: mouse liver tissue Chromatin
Used: 100ug tissue Antibody Used: 10ug

Submitted by: Joanna DiSpirito University of Pennsylvania

Information**Name** Thrb**Synonyms** Erba2, Nr1a2**Function**

Nuclear hormone receptor that can act as a repressor or activator of transcription. High affinity receptor for thyroid hormones, including triiodothyronine and thyroxine.

Cellular Location

Nucleus.



WB Suggested Anti-Thrb Antibody Titration:
0.2-1 µg/ml
Positive Control: Mouse Muscle

**Thrb antibody - N-terminal region -
Protocols**

Provided below are standard protocols that you may find useful for product applications.

- [Western Blot](#)
- [Blocking Peptides](#)
- [Dot Blot](#)
- [Immunohistochemistry](#)
- [Immunofluorescence](#)
- [Immunoprecipitation](#)
- [Flow Cytometry](#)
- [Cell Culture](#)