

SCAND3 antibody - C-terminal region
Rabbit Polyclonal Antibody
Catalog # AI12833

Specification

SCAND3 antibody - C-terminal region - Product Information

Application **WB**
Primary Accession [Q6R2W3](#)
Other Accession [NM_052923](#),
[NP_443155](#)
Reactivity **Human, Horse, Dog**
Predicted **Horse**
Host **Rabbit**
Clonality **Polyclonal**
Calculated MW **152kDa KDa**

SCAND3 antibody - C-terminal region - Additional Information

Gene ID 114821

Alias Symbol **DKFZp434N092, FLJ31087, KIAA1925, MGC131782, MGC133310, MGC133311, SCAND3, ZFP38-L, ZNF305P2, dj1186N24.3, ZNF452**

Other Names

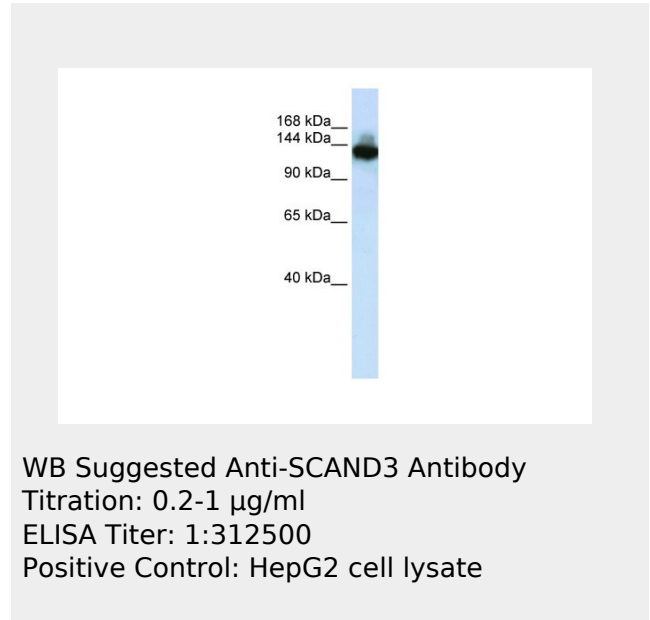
SCAN domain-containing protein 3, Transposon-derived Buster4 transposase-like protein, Zinc finger BED domain-containing protein 9, ZBED9, Buster4, KIAA1925, SCAND3, ZNF305P2, ZNF452

Format

Liquid. Purified antibody supplied in 1x PBS buffer with 0.09% (w/v) sodium azide and 2% sucrose.

Reconstitution & Storage

Add 50 ul of distilled water. Final anti-SCAND3 antibody concentration is 1 mg/ml in PBS buffer with 2% sucrose. For longer periods of storage, store at 20°C.



SCAND3 antibody - C-terminal region - References

Mehrle, A., Nucleic Acids Res. 34 (DATABASE ISSUE), D415-D418 (2006) Reconstitution and Storage: For short term use, store at 2-8°C up to 1 week. For long term storage, store at -20°C in small aliquots to prevent freeze-thaw cycles.

Avoid repeat freeze-thaw cycles.

Precautions

SCAND3 antibody - C-terminal region is for research use only and not for use in diagnostic or therapeutic procedures.

SCAND3 antibody - C-terminal region - Protein Information

Name ZBED9

Synonyms Buster4, KIAA1925, SCAND3, ZNF305P2, ZNF

Cellular Location

Nucleus
{ECO:0000255|PROSITE-ProRule:PRU00187
}.

Tissue Location

Weakly expressed in the lung (at protein level).

SCAND3 antibody - C-terminal region - Protocols

Provided below are standard protocols that you may find useful for product applications.

- [Western Blot](#)
- [Blocking Peptides](#)
- [Dot Blot](#)
- [Immunohistochemistry](#)
- [Immunofluorescence](#)
- [Immunoprecipitation](#)
- [Flow Cytometry](#)
- [Cell Culture](#)