

MED25 Antibody - C-terminal region

Rabbit Polyclonal Antibody

Catalog # AI13205

Specification

MED25 Antibody - C-terminal region - Product Information

Application	CHIP, WB
Primary Accession	B9TX37
Reactivity	Human, Mouse, Rat, Rabbit, Pig, Horse, Bovine, Dog
Predicted	Human, Mouse, Rat, Rabbit, Pig, Horse, Bovine, Dog
Host	Rabbit
Clonality	Polyclonal
Calculated MW	25kDa KDa

MED25 Antibody - C-terminal region - Additional Information

Format

Liquid. Purified antibody supplied in 1x PBS buffer with 0.09% (w/v) sodium azide and 2% sucrose.

Reconstitution & Storage

Add 50 μ l of distilled water. Final Anti-antibody concentration is 1 mg/ml in PBS buffer with 2% sucrose. For longer periods of storage, store at -20°C. Avoid repeat freeze-thaw cycles.

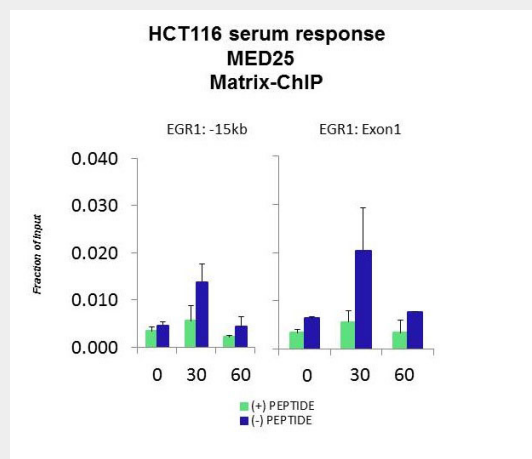
Precautions

MED25 Antibody - C-terminal region is for research use only and not for use in diagnostic or therapeutic procedures.

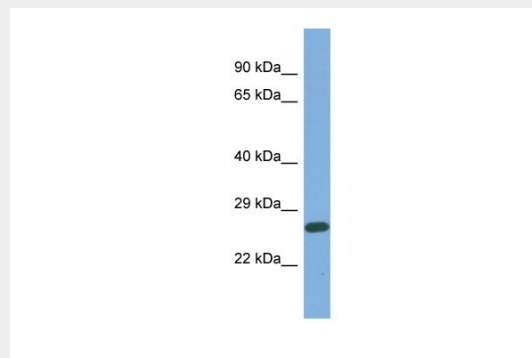
MED25 Antibody - C-terminal region - Protein Information

MED25 Antibody - C-terminal region - Protocols

Provided below are standard protocols that you



Quiescent human colon carcinoma HCT116 cultures were treated with 10% FBS for three time points (0, 15, 30min) or (0, 30, 60min) were used in Matrix-ChIP and real-time PCR assays at EGR1 gene (Exon1) and 15kb upstream site.



Host: Rabbit
Target Name: MED25
Sample Tissue: OVCAR-3 Whole cell lysate
Antibody Dilution: 1.0 μ g/ml

may find useful for product applications.

- [Western Blot](#)
- [Blocking Peptides](#)
- [Dot Blot](#)
- [Immunohistochemistry](#)
- [Immunofluorescence](#)
- [Immunoprecipitation](#)
- [Flow Cytometry](#)
- [Cell Culture](#)