

## MED31 antibody - N-terminal region

### Rabbit Polyclonal Antibody

Catalog # AI14009

### Specification

#### MED31 antibody - N-terminal region - Product Information

Application	<b>CHIP, WB</b>
Primary Accession	<a href="#">Q9Y3C7</a>
Other Accession	<a href="#">NM_016055</a> , <a href="#">NP_057144</a>
Reactivity	<b>Human, Mouse, Rat, Rabbit, Horse, Bovine, Guinea Pig, Dog</b>
Predicted	<b>Human, Mouse, Rat, Chicken, Bovine, Dog</b>
Host	<b>Rabbit</b>
Clonality	<b>Polyclonal</b>
Calculated MW	<b>16kDa KDa</b>

#### MED31 antibody - N-terminal region - Additional Information

**Gene ID 51003**

**Alias Symbol** **3110004H13Rik, CGI-125, FLJ27436, FLJ36714, Soh1**

#### Other Names

Mediator of RNA polymerase II transcription subunit 31, Mediator complex subunit 31, Mediator complex subunit SOH1, hSOH1, MED31, SOH1

#### Format

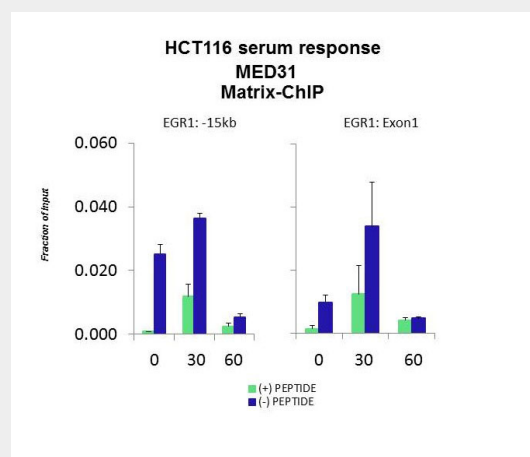
Liquid. Purified antibody supplied in 1x PBS buffer with 0.09% (w/v) sodium azide and 2% sucrose.

#### Reconstitution & Storage

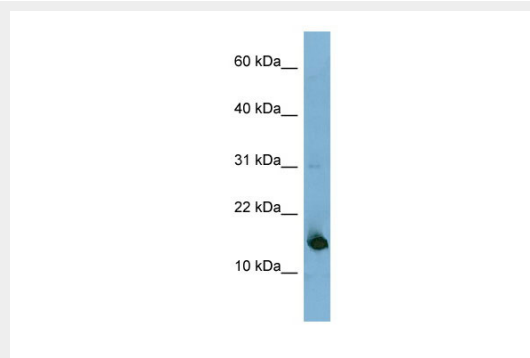
Add 50 ul of distilled water. Final anti-MED31 antibody concentration is 1 mg/ml in PBS buffer with 2% sucrose. For longer periods of storage, store at 20°C. Avoid repeat freeze-thaw cycles.

#### Precautions

MED31 antibody - N-terminal region is for



Quiescent human colon carcinoma HCT116 cultures were treated with 10% FBS for three time points (0, 15, 30min) or (0, 30, 60min) were used in Matrix-ChIP and real-time PCR assays at EGR1 gene (Exon1) and 15kb upstream site.



WB Suggested Anti-MED31 Antibody  
Titration: 0.2-1 µg/ml  
ELISA Titer: 1:1562500  
Positive Control: Human Liver

### MED31 antibody - N-terminal region - References

Lai C.-H., et al. Genome Res. 10:703-713(2000).  
Ota T., et al. Nat. Genet. 36:40-45(2004).  
Mural R.J., et al. Submitted (SEP-2005) to the EMBL/GenBank/DBJ databases.

research use only and not for use in  
diagnostic or therapeutic procedures.

Gu W.,et al.Mol. Cell 3:97-108(1999).  
Gu W.,et al.Mol. Cell 3:541-541(1999).

#### **MED31 antibody - N-terminal region - Protein Information**

**Name** MED31

**Synonyms** SOH1

#### **Function**

Component of the Mediator complex, a coactivator involved in the regulated transcription of nearly all RNA polymerase II-dependent genes. Mediator functions as a bridge to convey information from gene-specific regulatory proteins to the basal RNA polymerase II transcription machinery. Mediator is recruited to promoters by direct interactions with regulatory proteins and serves as a scaffold for the assembly of a functional preinitiation complex with RNA polymerase II and the general transcription factors.

#### **Cellular Location**

Nucleus.

#### **MED31 antibody - N-terminal region - Protocols**

Provided below are standard protocols that you may find useful for product applications.

- [Western Blot](#)
- [Blocking Peptides](#)
- [Dot Blot](#)
- [Immunohistochemistry](#)
- [Immunofluorescence](#)
- [Immunoprecipitation](#)
- [Flow Cytometry](#)
- [Cell Culture](#)