

NPBWR1 / GPR7 Antibody (Cytoplasmic Domain)
Rabbit Polyclonal Antibody
Catalog # ALS10056

Specification

NPBWR1 / GPR7 Antibody (Cytoplasmic Domain) - Product Information

Application	IHC
Primary Accession	P48145
Reactivity	Human
Host	Rabbit
Clonality	Polyclonal
Calculated MW	36kDa KDa

NPBWR1 / GPR7 Antibody (Cytoplasmic Domain) - Additional Information

Gene ID 2831

Other Names

Neuropeptides B/W receptor type 1,
G-protein coupled receptor 7, NPBWR1,
GPR7

Target/Specificity

Human NPBWR1. BLAST analysis of the peptide immunogen showed no homology with other human proteins.

Reconstitution & Storage

Long term: -70°C; Short term: +4°C

Precautions

NPBWR1 / GPR7 Antibody (Cytoplasmic Domain) is for research use only and not for use in diagnostic or therapeutic procedures.

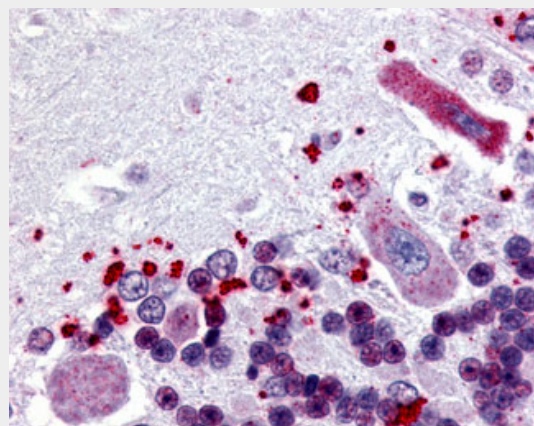
NPBWR1 / GPR7 Antibody (Cytoplasmic Domain) - Protein Information

Name NPBWR1

Synonyms GPR7

Function

Interacts specifically with a number of opioid ligands. Receptor for neuropeptides B and W, which may be involved in neuroendocrine system regulation, food intake and the organization of other signals.



Anti-NPBWR1 antibody ALS10056 IHC of human brain, cerebellum.

NPBWR1 / GPR7 Antibody (Cytoplasmic Domain) - Background

Interacts specifically with a number of opioid ligands. Receptor for neuropeptides B and W, which may be involved in neuroendocrine system regulation, food intake and the organization of other signals. Has a higher affinity for neuropeptide B.

NPBWR1 / GPR7 Antibody (Cytoplasmic Domain) - References

- O'Dowd B.F., et al. Genomics 28:84-91(1995).
- Mural R.J., et al. Submitted (JUL-2005) to the EMBL/GenBank/DDBJ databases.
- Brezillon S., et al. J. Biol. Chem. 278:776-783(2003).
- Tanaka H., et al. Proc. Natl. Acad. Sci. U.S.A. 100:6251-6256(2003).
- Sjoebloom T., et al. Science 314:268-274(2006).

Has a higher affinity for neuropeptide B.

Cellular Location

Cell membrane; Multi-pass membrane protein.

Tissue Location

Found in cerebellum and frontal cortex.
Detected at high levels in hippocampus, amygdala and trachea; at moderate levels in fetal brain, pituitary gland and prostate.
Not in caudate, accumbens, kidney or liver.
Also detected at high levels in lung carcinoma

Volume

50 µl

NPBWR1 / GPR7 Antibody (Cytoplasmic Domain) - Protocols

Provided below are standard protocols that you may find useful for product applications.

- [Western Blot](#)
- [Blocking Peptides](#)
- [Dot Blot](#)
- [Immunohistochemistry](#)
- [Immunofluorescence](#)
- [Immunoprecipitation](#)
- [Flow Cytometry](#)
- [Cell Culture](#)