

SMO / Smoothened Antibody (clone 3D10)
Mouse Monoclonal Antibody
Catalog # ALS14524

Specification

SMO / Smoothened Antibody (clone 3D10) - Product Information

Application	IHC
Primary Accession	Q99835
Reactivity	Human
Host	Mouse
Clonality	Monoclonal
Calculated MW	86kDa KDa

SMO / Smoothened Antibody (clone 3D10) - Additional Information

Gene ID 6608

Other Names

Smoothened homolog, SMO, Protein Gx, SMO, SMOH

Target/Specificity

Human SMO / Smoothened

Reconstitution & Storage

Store at -20°C or lower. Aliquot to avoid repeated freezing and thawing.

Precautions

SMO / Smoothened Antibody (clone 3D10) is for research use only and not for use in diagnostic or therapeutic procedures.

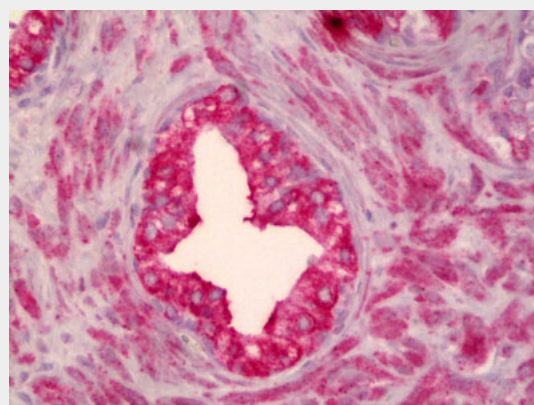
SMO / Smoothened Antibody (clone 3D10) - Protein Information

Name SMO

Synonyms SMOH

Function

G protein-coupled receptor that probably associates with the patched protein (PTCH) to transduce the hedgehog's proteins signal. Binding of sonic hedgehog (SHH) to its receptor patched is thought to prevent normal inhibition by patched of smoothened (SMO). Required for the accumulation of



Anti-SMO antibody IHC of human prostate.

SMO / Smoothened Antibody (clone 3D10) - Background

G protein-coupled receptor that probably associates with the patched protein (PTCH) to transduce the hedgehog's proteins signal. Binding of sonic hedgehog (SHH) to its receptor patched is thought to prevent normal inhibition by patched of smoothened (SMO). Required for the accumulation of KIF7 and GLI3 in the cilia.

SMO / Smoothened Antibody (clone 3D10) - References

Stone D.M.,et al.Nature 384:129-134(1996).
Xie J.,et al.Nature 391:90-92(1998).
Jiang N.,et al.Submitted (JAN-1999) to the EMBL/GenBank/DDBJ databases.
Scherer S.W.,et al.Science 300:767-772(2003).
Mural R.J.,et al.Submitted (JUL-2005) to the EMBL/GenBank/DDBJ databases.

KIF7, GLI2 and GLI3 in the cilia (PubMed:19592253).

Interacts with DLG5 at the ciliary base to induce the accumulation of KIF7 and GLI2 at the ciliary tip for GLI2 activation (By similarity).

Cellular Location

Membrane; Multi- pass membrane protein.
Cell projection, cilium

SMO / Smoothened Antibody (clone 3D10) - Protocols

Provided below are standard protocols that you may find useful for product applications.

- [Western Blot](#)
- [Blocking Peptides](#)
- [Dot Blot](#)
- [Immunohistochemistry](#)
- [Immunofluorescence](#)
- [Immunoprecipitation](#)
- [Flow Cytometry](#)
- [Cell Culture](#)