

CDH1 / E Cadherin Antibody
Goat Polyclonal Antibody
Catalog # ALS17189

Specification

CDH1 / E Cadherin Antibody - Product Information

Application	IHC-P, WB
Primary Accession	P12830
Other Accession	999
Reactivity	Human, Mouse, Rat, Monkey, Dog
Host	Goat
Clonality	Polyclonal
Calculated MW	97456

CDH1 / E Cadherin Antibody - Additional Information

Gene ID 999

Other Names

CDH1, CD324, CDHE, Cell-CAM 120/80, E Cadherin, E-Cadherin, ECAD, Epithelial cadherin, Arc-1, UVO, Cadherin-1, CAM 120/80, CD324 antigen, LCAM, Uvomorulin

Target/Specificity

Detects endogenous levels of total E-cadherin protein by Western blot in the whole cell lysates (e.g. HeLa and COS-7). This Ab does not recognize CDH2.

Reconstitution & Storage

PBS, 20% glycerol, 0.05% sodium azide. Store at 4°C for one month or -20°C for longer. Avoid freeze/thaw cycles.

Precautions

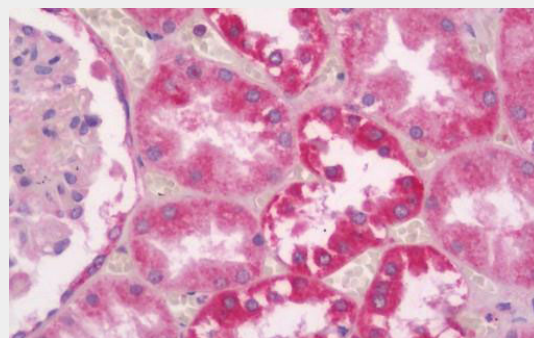
CDH1 / E Cadherin Antibody is for research use only and not for use in diagnostic or therapeutic procedures.

CDH1 / E Cadherin Antibody - Protein Information

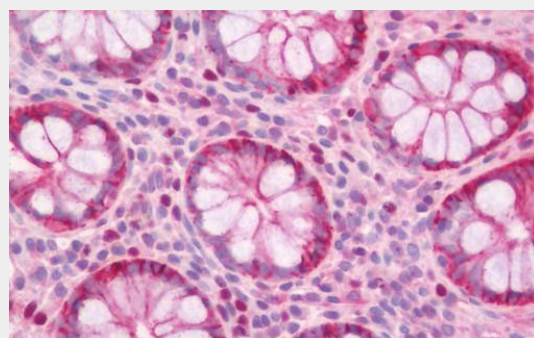
Name CDH1

Synonyms CDHE, UVO

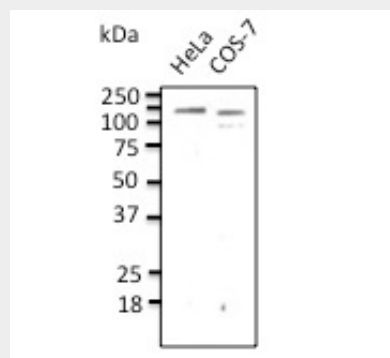
Function



Human Kidney: Formalin-Fixed, Paraffin-Embedded (FFPE)



Human Colon: Formalin-Fixed, Paraffin-Embedded (FFPE)



Endogenous CDH1 detected with Anti-CDH1 Ab at 1:500 dilution. Lysate at 100ug per lane.

CDH1 / E Cadherin Antibody - Background

Cadherins are calcium-dependent cell adhesion proteins (PubMed:11976333). They preferentially interact with themselves in a homophilic manner in connecting cells; cadherins may thus contribute to the sorting of heterogeneous cell types. CDH1 is involved in mechanisms regulating cell-cell adhesions, mobility and proliferation of epithelial cells (PubMed:11976333). Has a potent invasive suppressor role. It is a ligand for integrin alpha-E/beta-7.

Cellular Location

Cell junction, adherens junction. Cell membrane; Single-pass type I membrane protein. Endosome. Golgi apparatus, trans-Golgi network. Note=Colocalizes with DLGAP5 at sites of cell-cell contact in intestinal epithelial cells. Anchored to actin microfilaments through association with alpha-, beta- and gamma-catenin. Sequential proteolysis induced by apoptosis or calcium influx, results in translocation from sites of cell-cell contact to the cytoplasm Colocalizes with RAB11A endosomes during its transport from the Golgi apparatus to the plasma membrane

Tissue Location

Non-neural epithelial tissues.

Volume

100 µl

Cadherins are calcium-dependent cell adhesion proteins. They preferentially interact with themselves in a homophilic manner in connecting cells; cadherins may thus contribute to the sorting of heterogeneous cell types. CDH1 is involved in mechanisms regulating cell-cell adhesions, mobility and proliferation of epithelial cells. Has a potent invasive suppressor role. It is a ligand for integrin alpha-E/beta-7.

CDH1 / E Cadherin Antibody - References

Bussemakers M.J.G.,et al.Mol. Biol. Rep. 17:123-128(1993).
Oda T.,et al.Proc. Natl. Acad. Sci. U.S.A. 91:1858-1862(1994).
Rimm D.L.,et al.Biochem. Biophys. Res. Commun. 200:1754-1761(1994).
Ito K.,et al.Oncogene 18:7080-7090(1999).
Shibamoto S.,et al.Submitted (MAR-1999) to the EMBL/GenBank/DBJ databases.

CDH1 / E Cadherin Antibody - Protocols

Provided below are standard protocols that you may find useful for product applications.

- [Western Blot](#)
- [Blocking Peptides](#)
- [Dot Blot](#)
- [Immunohistochemistry](#)
- [Immunofluorescence](#)
- [Immunoprecipitation](#)
- [Flow Cytometry](#)
- [Cell Culture](#)