

AFP Antibody (N-term)
Mouse Monoclonal Antibody (Mab)
Catalog # AM1835a

Specification

AFP Antibody (N-term) - Product Information

Application	WB,E
Primary Accession	P02771
Other Accession	NP_001125.1
Reactivity	Human
Host	Mouse
Clonality	Monoclonal
Isotype	Mouse IgM
Antigen Region	56-85

AFP Antibody (N-term) - Additional Information

Gene ID 174

Other Names

Alpha-fetoprotein, Alpha-1-fetoprotein,
Alpha-fetoglobulin, AFP, HPAFP

Target/Specificity

This AFP antibody is generated from mice immunized with a KLH conjugated synthetic peptide between 56-85 amino acids from the N-terminal region of human AFP.

Dilution

WB~~1:31.25

Format

Purified monoclonal antibody supplied in PBS with 0.09% (W/V) sodium azide. This antibody is purified through a protein G column, followed by dialysis against PBS.

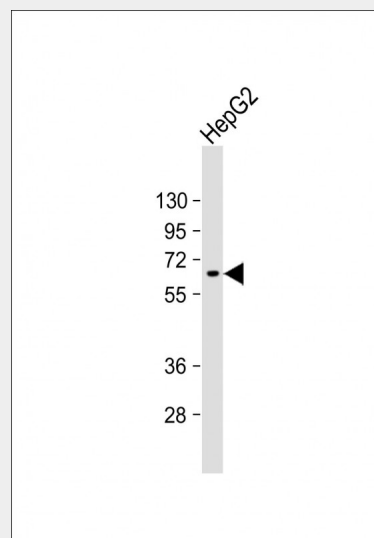
Storage

Maintain refrigerated at 2-8°C for up to 2 weeks. For long term storage store at -20°C in small aliquots to prevent freeze-thaw cycles.

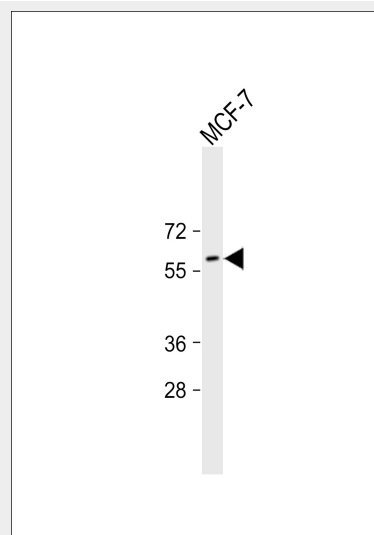
Precautions

AFP Antibody (N-term) is for research use only and not for use in diagnostic or therapeutic procedures.

AFP Antibody (N-term) - Protein Information



Anti- at 1:1000 dilution + HepG2 whole cell lysate Lysates/proteins at 20 µg per lane. Secondary Goat Anti-mouse IgG, (H+L), Peroxidase conjugated at 1/10000 dilution. Predicted band size : 69 kDa
Blocking/Dilution buffer: 5% NFDM/TBST.



"Anti-AFP Antibody (N-term) at 1:31.25 dilution + MCF-7 whole cell lysate Secondary Goat Anti-mouse IgM, (H+L), Peroxidase conjugated at 1/10000 dilution. Predicted band size : 68678 Da Blocking/Dilution buffer:

5% NFDM/TBST."

Name AFP**Synonyms** HPAFP**Function**

Binds copper, nickel, and fatty acids as well as, and bilirubin less well than, serum albumin. Only a small percentage (less than 2%) of the human AFP shows estrogen-binding properties.

Cellular Location

Secreted.

Tissue Location

Plasma. Synthesized by the fetal liver and yolk sac

AFP Antibody (N-term) - Protocols

Provided below are standard protocols that you may find useful for product applications.

- [Western Blot](#)
- [Blocking Peptides](#)
- [Dot Blot](#)
- [Immunohistochemistry](#)
- [Immunofluorescence](#)
- [Immunoprecipitation](#)
- [Flow Cytometry](#)
- [Cell Culture](#)

AFP Antibody (N-term) - Background

alpha 1 Fetoprotein encodes alpha-fetoprotein, a major plasma protein produced by the yolk sac and the liver during fetal life. Alpha-fetoprotein expression in adults is often associated with hepatoma or teratoma. However, hereditary persistence of alpha-fetoprotein may also be found in individuals with no obvious pathology. The protein is thought to be the fetal counterpart of serum albumin, and the alpha-fetoprotein and albumin genes are present in tandem in the same transcriptional orientation on chromosome 4. Alpha-fetoprotein is found in monomeric as well as dimeric and trimeric forms, and binds copper, nickel, fatty acids and bilirubin. The level of alpha-fetoprotein in amniotic fluid is used to measure renal loss of protein to screen for spina bifida and anencephaly.

AFP Antibody (N-term) - References

Suriapranata, I.M., et al. Clin. Chim. Acta 411 (5-6), 351-358 (2010)
Vibert, E., et al. Am. J. Transplant. 10(1):129-137(2010)
Potapovich, A.I., et al. Br. J. Pharmacol. 158(5):1236-1247(2009)