

LIMK1 Antibody (C-term)
Mouse Monoclonal Antibody (Mab)
Catalog # AM1862b**Specification****LIMK1 Antibody (C-term) - Product Information**

Application	WB,E
Primary Accession	P53667
Other Accession	NP_002305.1
Reactivity	Human, Mouse
Host	Mouse
Clonality	Monoclonal
Isotype	IgM,K
Antigen Region	479-508

LIMK1 Antibody (C-term) - Additional Information

Gene ID 3984

Other Names

LIM domain kinase 1, LIMK-1, LIMK1, LIMK

Target/Specificity

This LIMK1 antibody is generated from mice immunized with a KLH conjugated synthetic peptide between 479-508 amino acids from the C-terminal region of human LIMK1.

Dilution

WB~~1:1000

Format

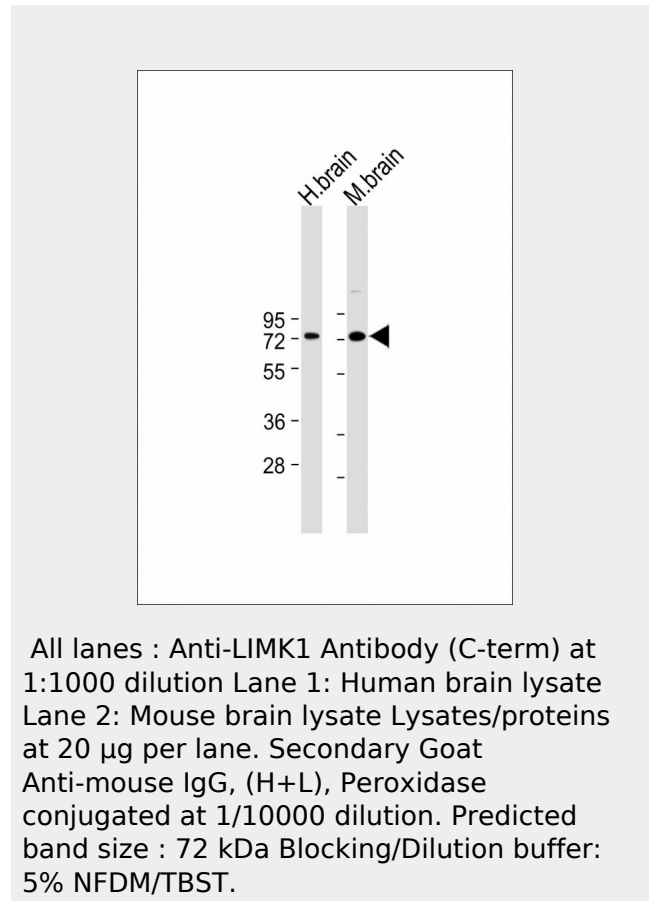
Purified polyclonal antibody supplied in PBS with 0.09% (W/V) sodium azide. This antibody is prepared by Saturated Ammonium Sulfate (SAS) precipitation followed by dialysis against PBS.

Storage

Maintain refrigerated at 2-8°C for up to 2 weeks. For long term storage store at -20°C in small aliquots to prevent freeze-thaw cycles.

Precautions

LIMK1 Antibody (C-term) is for research use only and not for use in diagnostic or therapeutic procedures.

LIMK1 Antibody (C-term) - Protein Information**LIMK1 Antibody (C-term) - Background**

Protein kinase which regulates actin filament dynamics. Phosphorylates and inactivates the actin binding/depolymerizing factor cofilin, thereby stabilizing the actin cytoskeleton. Stimulates axonal outgrowth and may be involved in brain development. Isoform 3 has a dominant negative effect on actin cytoskeletal changes.

Name LIMK1**Synonyms** LIMK**Function**

Serine/threonine-protein kinase that plays an essential role in the regulation of actin filament dynamics. Acts downstream of several Rho family GTPase signal transduction pathways (PubMed:10436159, PubMed:11832213, PubMed:12807904, PubMed:15660133, PubMed:16230460, PubMed:18028908, PubMed:22328514, PubMed:23633677). Activated by upstream kinases including ROCK1, PAK1 and PAK4, which phosphorylate LIMK1 on a threonine residue located in its activation loop (PubMed:10436159). LIMK1 subsequently phosphorylates and inactivates the actin binding/depolymerizing factors cofilin-1/CFL1, cofilin-2/CFL2 and destrin/DSTN, thereby preventing the cleavage of filamentous actin (F-actin), and stabilizing the actin cytoskeleton (PubMed:11832213, PubMed:15660133, PubMed:16230460, PubMed:<a href="http://www.uniprot.org/ci

tations/23633677" target="_blank">23633677). In this way LIMK1 regulates several actin-dependent biological processes including cell motility, cell cycle progression, and differentiation (PubMed:11832213, PubMed:15660133, PubMed:16230460, PubMed:23633677). Phosphorylates TPPP on serine residues, thereby promoting microtubule disassembly (PubMed:18028908). Stimulates axonal outgrowth and may be involved in brain development (PubMed:18028908).

Cellular Location

Cytoplasm. Nucleus. Cytoplasm, cytoskeleton. Cell projection, lamellipodium {ECO:0000250|UniProtKB:P53668}
Note=Predominantly found in the cytoplasm. Localizes in the lamellipodium in a CDC42BPA, CDC42BPB and FAM89B/LRAP25-dependent manner. {ECO:0000250|UniProtKB:P53668}

Tissue Location

Highest expression in both adult and fetal nervous system. Detected ubiquitously throughout the different regions of adult brain, with highest levels in the cerebral cortex. Expressed to a lesser extent in heart and skeletal muscle

LIMK1 Antibody (C-term) - Protocols

Provided below are standard protocols that you may find useful for product applications.

- [Western Blot](#)
- [Blocking Peptides](#)
- [Dot Blot](#)
- [Immunohistochemistry](#)
- [Immunofluorescence](#)

- [Immunoprecipitation](#)
- [Flow Cytometry](#)
- [Cell Culture](#)