

**CSNK2B Antibody**  
**Mouse Monoclonal Antibody (Mab)**  
**Catalog # AM1923b**

**Specification**

**CSNK2B Antibody - Product Information**

Application	<b>WB,E</b>
Primary Accession	<a href="#">P67870</a>
Other Accession	<a href="#">P67874</a> , <a href="#">P67873</a> , <a href="#">P67872</a> , <a href="#">P67871</a> , <a href="#">P67869</a> , <a href="#">P67868</a> , <a href="#">NP_001311.3</a>
Reactivity Predicted	<b>Human, Mouse Bovine, Chicken, Pig, Rabbit, Rat</b>
Host	<b>Mouse</b>
Clonality	<b>Monoclonal</b>
Isotype	<b>IgG1,k</b>

**CSNK2B Antibody - Additional Information**

**Gene ID** 1460

**Other Names**

Casein kinase II subunit beta, CK II beta, Phosvitin, Protein G5a, CSNK2B, CK2N, G5A

**Target/Specificity**

This CSNK2B monoclonal antibody is generated from mouse immunized with CSNK2B recombinant protein.

**Dilution**

WB~~1:1000

**Format**

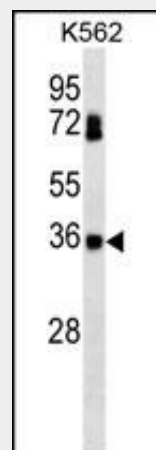
Purified monoclonal antibody supplied in PBS with 0.09% (W/V) sodium azide. This antibody is purified through a protein G column, followed by dialysis against PBS.

**Storage**

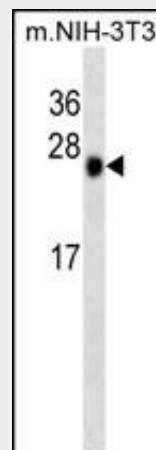
Maintain refrigerated at 2-8°C for up to 2 weeks. For long term storage store at -20°C in small aliquots to prevent freeze-thaw cycles.

**Precautions**

CSNK2B Antibody is for research use only and not for use in diagnostic or therapeutic procedures.



CSNK2B Antibody (Cat. #AM1923b) western blot analysis in K562 cell line lysates (35µg/lane). This demonstrates the CSNK2B antibody detected the CSNK2B protein (arrow).



CSNK2B Antibody (Cat. #AM1923b) western blot analysis in mouse NIH-3T3 cell line lysates (35µg/lane). This demonstrates the CSNK2B antibody detected the CSNK2B protein (arrow).

**CSNK2B Antibody - Background**

This gene encodes the beta subunit of casein kinase II, a ubiquitous protein kinase which regulates

### CSNK2B Antibody - Protein Information

**Name** CSNK2B

**Synonyms** CK2N, G5A

#### Function

Regulatory subunit of casein kinase II/CK2. As part of the kinase complex regulates the basal catalytic activity of the alpha subunit a constitutively active serine/threonine-protein kinase that phosphorylates a large number of substrates containing acidic residues C-terminal to the phosphorylated serine or threonine (PubMed:<a href="http://www.uniprot.org/citations/11239457" target="\_blank">11239457</a>, PubMed:<a href="http://www.uniprot.org/citations/16818610" target="\_blank">16818610</a>). Participates in Wnt signaling (By similarity).

metabolic pathways, signal transduction, transcription, translation, and replication. The enzyme is composed of three subunits, alpha, alpha prime and beta, which form a tetrameric holoenzyme. The alpha and alpha prime subunits are catalytic, while the beta subunit serves regulatory functions. The enzyme localizes to the endoplasmic reticulum and the Golgi apparatus.

### CSNK2B Antibody - References

Shehata, M., et al. Blood 116(14):2513-2521(2010)  
Bailey, S.D., et al. Diabetes Care 33(10):2250-2253(2010)  
Olsen, B.B., et al. Int. J. Oncol. 36(5):1175-1182(2010)  
Shi, Y., et al. BMB Rep 42(12):840-845(2009)  
Talmud, P.J., et al. Am. J. Hum. Genet. 85(5):628-642(2009)

### CSNK2B Antibody - Protocols

Provided below are standard protocols that you may find useful for product applications.

- [Western Blot](#)
- [Blocking Peptides](#)
- [Dot Blot](#)
- [Immunohistochemistry](#)
- [Immunofluorescence](#)
- [Immunoprecipitation](#)
- [Flow Cytometry](#)
- [Cell Culture](#)