

**SYP Antibody (C-term)**  
**Mouse Monoclonal Antibody (Mab)**  
**Catalog # AM1945b**

**Specification**

**SYP Antibody (C-term) - Product Information**

Application	<b>WB,E</b>
Primary Accession	<a href="#">P08247</a>
Other Accession	<a href="#">P07825</a> , <a href="#">Q62277</a> , <a href="#">NP_003170.1</a>
Reactivity	<b>Mouse</b>
Predicted	<b>Rat</b>
Host	<b>Mouse</b>
Clonality	<b>Monoclonal</b>
Isotype	<b>IgM,k</b>
Calculated MW	<b>33845</b>
Antigen Region	<b>225-253</b>

**SYP Antibody (C-term) - Additional Information**

**Gene ID** 6855

**Other Names**

Synaptophysin, Major synaptic vesicle protein p38, SYP

**Target/Specificity**

This SYP antibody is generated from mice immunized with a KLH conjugated synthetic peptide between 225-253 amino acids from the C-terminal region of human SYP.

**Dilution**

WB ~ ~ 1:100

**Format**

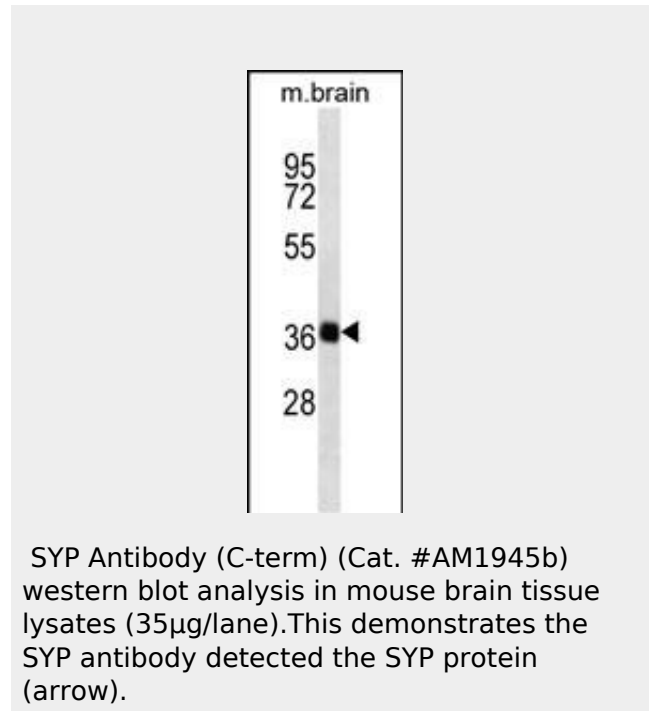
Purified monoclonal antibody supplied in PBS with 0.09% (W/V) sodium azide. This antibody is prepared by Euglobin precipitation followed by dialysis against PBS.

**Storage**

Maintain refrigerated at 2-8°C for up to 2 weeks. For long term storage store at -20°C in small aliquots to prevent freeze-thaw cycles.

**Precautions**

SYP Antibody (C-term) is for research use only and not for use in diagnostic or



**SYP Antibody (C-term) - Background**

Synaptophysin (p38) is an integral membrane protein of small synaptic vesicles in brain and endocrine cells.[supplied by OMIM].

**SYP Antibody (C-term) - References**

- Ishida, M., et al. *Oncol. Rep.* 22(4):733-737(2009)
- Sterlacci, W., et al. *Virchows Arch.* 455(2):125-132(2009)
- Head, E., et al. *Neurobiol. Aging* 30(7):1125-1134(2009)
- Gulubova, M., et al. *J. Gastroenterol. Hepatol.* 23(10):1574-1585(2008)
- Glantz, L.A., et al. *Neuroscience* 149(3):582-591(2007)

therapeutic procedures.

#### **SYP Antibody (C-term) - Protein Information**

**Name** SYP

#### **Function**

Possibly involved in structural functions as organizing other membrane components or in targeting the vesicles to the plasma membrane. Involved in the regulation of short-term and long-term synaptic plasticity (By similarity).

#### **Cellular Location**

Cytoplasmic vesicle, secretory vesicle, synaptic vesicle membrane; Multi-pass membrane protein. Cell junction, synapse, synaptosome

#### **Tissue Location**

Expressed in the brain, with expression in the hippocampus, the neuropil in the dentate gyrus, where expression is higher in the outer half of the molecular layer than in the inner half, and in the neuropil of CA4 and CA3.

#### **SYP Antibody (C-term) - Protocols**

Provided below are standard protocols that you may find useful for product applications.

- [Western Blot](#)
- [Blocking Peptides](#)
- [Dot Blot](#)
- [Immunohistochemistry](#)
- [Immunofluorescence](#)
- [Immunoprecipitation](#)
- [Flow Cytometry](#)
- [Cell Culture](#)