

**C3 Antibody (C-term)**  
**Mouse Monoclonal Antibody (Mab)**  
**Catalog # AM2085a**

**Specification**

**C3 Antibody (C-term) - Product Information**

|                   |                             |
|-------------------|-----------------------------|
| Application       | WB,E                        |
| Primary Accession | <a href="#">P01024</a>      |
| Other Accession   | <a href="#">NP_000055.2</a> |
| Reactivity        | Human                       |
| Host              | Mouse                       |
| Clonality         | Monoclonal                  |
| Isotype           | IgG1                        |
| Calculated MW     | 187148                      |
| Antigen Region    | 1353-1382                   |

**C3 Antibody (C-term) - Additional Information**

**Gene ID 718**

**Other Names**

Complement C3, C3 and PZP-like alpha-2-macroglobulin domain-containing protein 1, Complement C3 beta chain, C3-beta-c, C3bc, Complement C3 alpha chain, C3a anaphylatoxin, Acylation stimulating protein, ASP, C3adesArg, Complement C3b alpha' chain, Complement C3c alpha' chain fragment 1, Complement C3dg fragment, Complement C3g fragment, Complement C3d fragment, Complement C3f fragment, Complement C3c alpha' chain fragment 2, C3, CPAMD1

**Target/Specificity**

This C3 antibody is generated from mice immunized with a KLH conjugated synthetic peptide between 1353-1382 amino acids from the C-terminal region of human C3.

**Dilution**

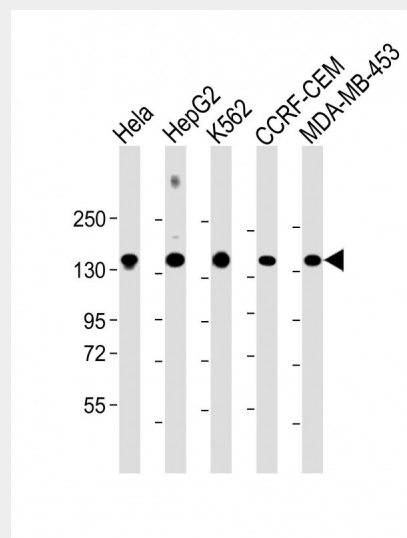
WB~~1:2000

**Format**

Mouse monoclonal antibody supplied in crude ascites with 0.09% (W/V) sodium azide.

**Storage**

Maintain refrigerated at 2-8°C for up to 2 weeks. For long term storage store at -20°C



All lanes : Anti-C3 Antibody (C-term) at 1:2000 dilution Lane 1: HeLa whole cell lysate Lane 2: HepG2 whole cell lysate Lane 3: K562 whole cell lysate Lane 4: CCRF-CEM whole cell lysate Lane 5: MDA-MB-453 whole cell lysate Lysates/proteins at 20 µg per lane. Secondary Goat Anti-mouse IgG, (H+L), Peroxidase conjugated at 1/10000 dilution. Predicted band size : 187 kDa Blocking/Dilution buffer: 5% NFDM/TBST.

**C3 Antibody (C-term) - Background**

Complement component C3 plays a central role in the activation of complement system. Its activation is required for both classical and alternative complement activation pathways. People with C3 deficiency are susceptible to bacterial infection.

**C3 Antibody (C-term) - References**

Martinez-Barricarte, R., et al. J. Clin. Invest. 120(10):3702-3712(2010)  
Ruan, B.H., et al. J. Immunol. 185(7):4213-4222(2010)

in small aliquots to prevent freeze-thaw cycles.

**Precautions**

C3 Antibody (C-term) is for research use only and not for use in diagnostic or therapeutic procedures.

Luo, S., et al. J. Immunol. 185(4):2164-2173(2010)  
Zerbib, J., et al. Mol. Vis. 16, 1324-1330 (2010)  
:  
Johnatty, S.E., et al. PLoS Genet. 6 (7), E1001016 (2010) :

**C3 Antibody (C-term) - Protein Information**

**Name** C3

**Synonyms** CPAMD1

**Function**

C3 plays a central role in the activation of the complement system. Its processing by C3 convertase is the central reaction in both classical and alternative complement pathways. After activation C3b can bind covalently, via its reactive thioester, to cell surface carbohydrates or immune aggregates. [C3-beta-c]: Acts as a chemoattractant for neutrophils in chronic inflammation.

**Cellular Location**

Secreted.

**Tissue Location**

Plasma. The acylation stimulating protein (ASP) is expressed in adipocytes and released into the plasma during both the fasting and postprandial periods.

**C3 Antibody (C-term) - Protocols**

Provided below are standard protocols that you may find useful for product applications.

- [Western Blot](#)
- [Blocking Peptides](#)
- [Dot Blot](#)
- [Immunohistochemistry](#)
- [Immunofluorescence](#)
- [Immunoprecipitation](#)
- [Flow Cytometry](#)
- [Cell Culture](#)