

HKLK3 Antibody (C234)

Mouse Monoclonal Antibody (Mab)

Catalog # AM2088b

Specification

HKLK3 Antibody (C234) - Product Information

Application	WB,E
Primary Accession	P07288
Other Accession	NP_001639
Reactivity	Human
Host	Mouse
Clonality	Monoclonal
Isotype	IgM
Calculated MW	28741
Antigen Region	220-250

HKLK3 Antibody (C234) - Additional Information

Gene ID 354

Other Names

Prostate-specific antigen, PSA,
Gamma-seminoprotein, Semin,
Kallikrein-3, P-30 antigen, Semenogelase,
KLK3, APS

Target/Specificity

This HKLK3 antibody is generated from mice immunized with a KLH conjugated synthetic peptide between 220-250 amino acids from human HKLK3.

Dilution

WB~~1:100

Format

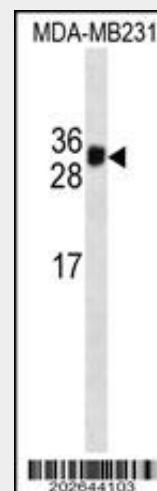
Purified monoclonal antibody supplied in PBS with 0.09% (W/V) sodium azide. This antibody is prepared by Euglobin precipitation followed by dialysis against PBS.

Storage

Maintain refrigerated at 2-8°C for up to 2 weeks. For long term storage store at -20°C in small aliquots to prevent freeze-thaw cycles.

Precautions

HKLK3 Antibody (C234) is for research use only and not for use in diagnostic or



HKLK3 Antibody (C234)(Cat. #AM2088b) western blot analysis in MDA-MB231 cell line lysates (35µg/lane). This demonstrates the HKLK3 antibody detected the HKLK3 protein (arrow).

HKLK3 Antibody (C234) - Background

Kallikreins are a subgroup of serine proteases having diverse physiological functions. Growing evidence suggests that many kallikreins are implicated in carcinogenesis and some have potential as novel cancer and other disease biomarkers. This gene is one of the fifteen kallikrein subfamily members located in a cluster on chromosome 19. Its protein product is a protease present in seminal plasma. It is thought to function normally in the liquefaction of seminal coagulum, presumably by hydrolysis of the high molecular mass seminal vesicle protein. Serum level of this protein, called PSA in the clinical setting, is useful in the diagnosis and monitoring of prostatic

therapeutic procedures.

HKLK3 Antibody (C234) - Protein Information

Name KLK3

Synonyms APS

Function

Hydrolyzes semenogelin-1 thus leading to the liquefaction of the seminal coagulum.

Cellular Location

Secreted.

carcinoma. Alternate splicing of this gene generates several transcript variants encoding different isoforms.

HKLK3 Antibody (C234) - References

Kim, S.T., et al. Prostate
70(16):1729-1738(2010)

Kuasne, H., et al. Cancer Invest.
28(9):917-924(2010)

Bailey, S.D., et al. Diabetes Care
33(10):2250-2253(2010)

Sarrats, A., et al. OMICS 14(4):465-474(2010)
Gallagher, D.J., et al. Clin. Cancer Res.
16(10):2819-2832(2010)

HKLK3 Antibody (C234) - Protocols

Provided below are standard protocols that you may find useful for product applications.

- [Western Blot](#)
- [Blocking Peptides](#)
- [Dot Blot](#)
- [Immunohistochemistry](#)
- [Immunofluorescence](#)
- [Immunoprecipitation](#)
- [Flow Cytometry](#)
- [Cell Culture](#)