

**GMFG Antibody(Ascites)**  
**Mouse Monoclonal Antibody (Mab)**  
Catalog # AM2232a**Specification****GMFG Antibody(Ascites) - Product Information**

Application	WB,E
Primary Accession	<a href="#">O60234</a>
Reactivity	Human
Host	Mouse
Clonality	Monoclonal
Isotype	IgG1

**GMFG Antibody(Ascites) - Additional Information**

Gene ID 9535

**Other Names**Glia maturation factor gamma,  
GMF-gamma, GMFG**Target/Specificity**

Purified His-tagged GMFG protein was used to produced this monoclonal antibody.

**Dilution**

WB~~1:40000

**Format**

Mouse monoclonal antibody supplied in crude ascites with 0.09% (W/V) sodium azide.

**Storage**

Maintain refrigerated at 2-8°C for up to 2 weeks. For long term storage store at -20°C in small aliquots to prevent freeze-thaw cycles.

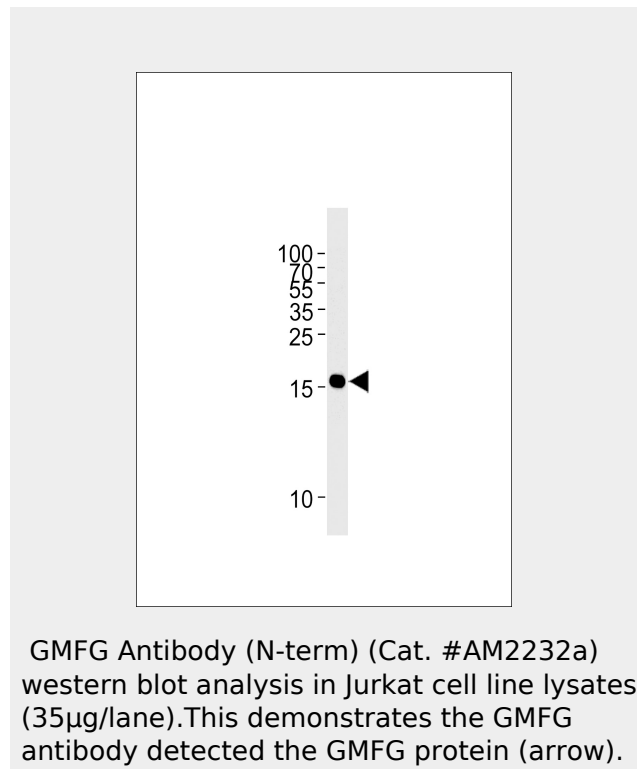
**Precautions**

GMFG Antibody(Ascites) is for research use only and not for use in diagnostic or therapeutic procedures.

**GMFG Antibody(Ascites) - Protein Information**

Name GMFG

Tissue Location

**GMFG Antibody(Ascites) - References**

- Asai K., et al. *Biochim. Biophys. Acta* 1396:242-244(1998).  
Peters N., et al. *Neurogenetics* 2:163-166(1999).  
Mao M., et al. *Proc. Natl. Acad. Sci. U.S.A.* 95:8175-8180(1998).  
Choudhary C., et al. *Science* 325:834-840(2009).  
Burkard T.R., et al. *BMC Syst. Biol.* 5:17-17(2011).

Expressed predominantly in lung, heart and placenta

### **GMFG Antibody(Ascites) - Protocols**

Provided below are standard protocols that you may find useful for product applications.

- [Western Blot](#)
- [Blocking Peptides](#)
- [Dot Blot](#)
- [Immunohistochemistry](#)
- [Immunofluorescence](#)
- [Immunoprecipitation](#)
- [Flow Cytometry](#)
- [Cell Culture](#)