

OTX2 Anitbody
Purified Mouse Monoclonal Antibody (Mab)
Catalog # AM8426b

Specification

OTX2 Anitbody - Product Information

Application	WB,E
Primary Accession	P32243
Reactivity	Human
Host	Mouse
Clonality	Monoclonal
Isotype	IgG1,κ
Calculated MW	31636

OTX2 Anitbody - Additional Information

Gene ID 5015

Other Names

Homeobox protein OTX2, Orthodenticle homolog 2, OTX2

Target/Specificity

This antibody is generated from a mouse immunized with a recombination protein from human.

Dilution

WB~~1:2000

Format

Purified monoclonal antibody supplied in PBS with 0.09% (W/V) sodium azide. This antibody is purified through a protein G column, followed by dialysis against PBS.

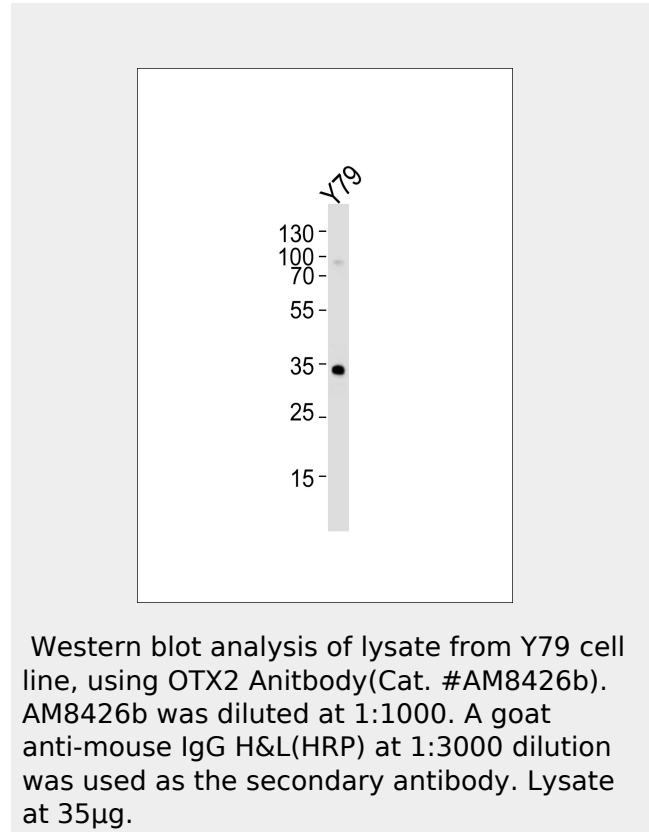
Storage

Maintain refrigerated at 2-8°C for up to 2 weeks. For long term storage store at -20°C in small aliquots to prevent freeze-thaw cycles.

Precautions

OTX2 Anitbody is for research use only and not for use in diagnostic or therapeutic procedures.

OTX2 Anitbody - Protein Information



OTX2 Anitbody - Background

Probably plays a role in the development of the brain and the sense organs. Can bind to the BCD target sequence (BTS): 5'-TCTAATCCC-3'.

OTX2 Anitbody - References

- Simeone A., et al. EMBO J. 12:2735-2747(1993).
- Perrault I., et al. Submitted (AUG-2000) to the EMBL/GenBank/DDBJ databases.
- Fong S.L., et al. Curr. Eye Res. 18:283-291(1999).
- Ota T., et al. Nat. Genet. 36:40-45(2004).
- Mural R.J., et al. Submitted (JUL-2005) to the EMBL/GenBank/DDBJ databases.

Name OTX2**Function**

Transcription factor probably involved in the development of the brain and the sense organs. Can bind to the bicoid/BCD target sequence (BTS): 5'-TCTAATCCC-3'.

Cellular Location

Nucleus.

OTX2 Antibody - Protocols

Provided below are standard protocols that you may find useful for product applications.

- [Western Blot](#)
- [Blocking Peptides](#)
- [Dot Blot](#)
- [Immunohistochemistry](#)
- [Immunofluorescence](#)
- [Immunoprecipitation](#)
- [Flow Cytometry](#)
- [Cell Culture](#)