

**RAB20 Antibody**  
**Purified Mouse Monoclonal Antibody (Mab)**  
**Catalog # AM8559b****Specification****RAB20 Antibody - Product Information**

Application	<b>WB,E</b>
Primary Accession	<a href="#">O9NX57</a>
Reactivity	<b>Human</b>
Host	<b>Mouse</b>
Clonality	<b>monoclonal</b>
Isotype	<b>IgG2a</b>
Calculated MW	<b>26277</b>

**RAB20 Antibody - Additional Information****Gene ID** 55647**Other Names**

Ras-related protein Rab-20, RAB20

**Target/Specificity**

This RAB20 antibody is generated from a mouse immunized with recombinant protein from human RAB20.

**Dilution**

WB ~ 1:2000-1:4000

**Format**

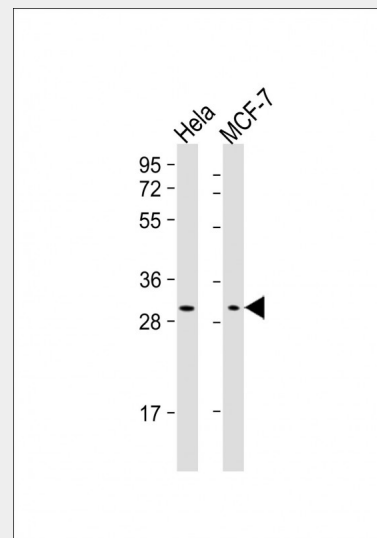
Purified monoclonal antibody supplied in PBS with 0.09% (W/V) sodium azide. This antibody is purified through a protein G column, followed by dialysis against PBS.

**Storage**

Maintain refrigerated at 2-8°C for up to 2 weeks. For long term storage store at -20°C in small aliquots to prevent freeze-thaw cycles.

**Precautions**

RAB20 Antibody is for research use only and not for use in diagnostic or therapeutic procedures.

**RAB20 Antibody - Protein Information****Name** RAB20

All lanes : Anti-RAB20 Antibody at 1:2000-1:4000 dilution Lane 1: Hela whole cell lysate Lane 2: MCF-7 whole cell lysate Lysates/proteins at 20 µg per lane. Secondary Goat Anti-Mouse IgG, (H+L), Peroxidase conjugated at 1/10000 dilution. Predicted band size : 26 kDa Blocking/Dilution buffer: 5% NFDM/TBST.

**RAB20 Antibody - Background**

Plays a role in apical endocytosis/recycling. Plays a role in the maturation and acidification of phagosomes that engulf pathogens, such as S.aureus and M.tuberculosis. Plays a role in the fusion of phagosomes with lysosomes.

**RAB20 Antibody - References**

Amillet J.-M., et al. Hum. Pathol. 37:256-263(2006).  
Ota T., et al. Nat. Genet. 36:40-45(2004).  
Dunham A., et al. Nature 428:522-528(2004).  
Mural R.J., et al. Submitted (JUL-2005) to the EMBL/GenBank/DDBJ databases.  
Seto S., et al. Traffic 12:407-420(2011).

**Function**

Plays a role in apical endocytosis/recycling. Plays a role in the maturation and acidification of phagosomes that engulf pathogens, such as S.aureus and M.tuberculosis. Plays a role in the fusion of phagosomes with lysosomes.

**Cellular Location**

Golgi apparatus. Cytoplasmic vesicle, phagosome Cytoplasmic vesicle, phagosome membrane; Lipid-anchor; Cytoplasmic side. Note=Highly enriched on apical endocytic structures in polarized epithelial cells of kidney proximal tubules (By similarity). Recruited to phagosomes containing S.aureus or M.tuberculosis (PubMed:2125211)  
{ECO:0000250|UniProtKB:P35295, ECO:0000269|PubMed:2125211}

**Tissue Location**

Low or absent expression in normal pancreas and stronger expression in 15 of 18 exocrine pancreatic adenocarcinomas (at protein level).

**RAB20 Antibody - Protocols**

Provided below are standard protocols that you may find useful for product applications.

- [Western Blot](#)
- [Blocking Peptides](#)
- [Dot Blot](#)
- [Immunohistochemistry](#)
- [Immunofluorescence](#)
- [Immunoprecipitation](#)
- [Flow Cytometry](#)
- [Cell Culture](#)