

**ME2 Antibody (C-term)**  
**Purified Mouse Monoclonal Antibody (Mab)**  
**Catalog # AM8621b**

**Specification**

**ME2 Antibody (C-term) - Product Information**

|                   |                        |
|-------------------|------------------------|
| Application       | <b>WB, IHC-P,E</b>     |
| Primary Accession | <a href="#">P23368</a> |
| Reactivity        | <b>Human, Mouse</b>    |
| Host              | <b>Mouse</b>           |
| Clonality         | <b>monoclonal</b>      |
| Isotype           | <b>IgG1,k</b>          |
| Calculated MW     | <b>65444</b>           |

**ME2 Antibody (C-term) - Additional Information**

**Gene ID** 4200

**Other Names**

NAD-dependent malic enzyme,  
mitochondrial, NAD-ME, 1.1.1.38, Malic  
enzyme 2, ME2

**Target/Specificity**

This ME2 antibody is generated from a mouse immunized with a KLH conjugated synthetic peptide between 522-556 amino acids from the C-terminal region of human ME2.

**Dilution**

WB~~1:4000

IHC-P~~1:25

**Format**

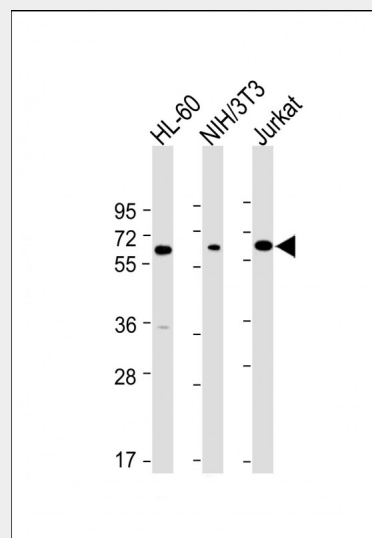
Purified monoclonal antibody supplied in PBS with 0.09% (W/V) sodium azide. This antibody is purified through a protein G column, followed by dialysis against PBS.

**Storage**

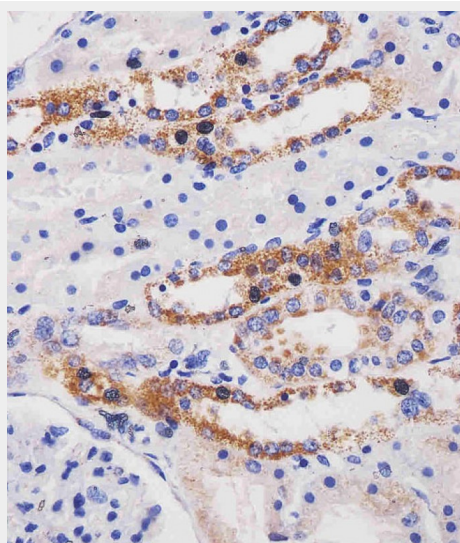
Maintain refrigerated at 2-8°C for up to 2 weeks. For long term storage store at -20°C in small aliquots to prevent freeze-thaw cycles.

**Precautions**

ME2 Antibody (C-term) is for research use only and not for use in diagnostic or therapeutic procedures.



All lanes : Anti-ME2 Antibody (C-term) at 1:4000 dilution Lane 1: HL-60 whole cell lysate Lane 2: NIH/3T3 whole cell lysate Lane 3: Jurkat whole cell lysate Lysates/proteins at 20 µg per lane. Secondary Goat Anti-mouse IgG, (H+L), Peroxidase conjugated at 1/10000 dilution. Predicted band size : 65 kDa Blocking/Dilution buffer: 5% NFDM/TBST.



AM8621b staining ME2 in human kidney tissue sections by Immunohistochemistry (IHC-P - paraformaldehyde-fixed,

**ME2 Antibody (C-term) - Protein Information****Name** ME2**Cellular Location**

Mitochondrion matrix.

paraffin-embedded sections). Tissue was fixed with formaldehyde and blocked with 3% BSA for 0.5 hour at room temperature; antigen retrieval was by heat mediation with a citrate buffer (pH6). Samples were incubated with primary antibody (1/25) for 1 hour at 37°C. A undiluted biotinylated goat polyvalent antibody was used as the secondary antibody.

**ME2 Antibody (C-term) - Protocols**

Provided below are standard protocols that you may find useful for product applications.

- [Western Blot](#)
- [Blocking Peptides](#)
- [Dot Blot](#)
- [Immunohistochemistry](#)
- [Immunofluorescence](#)
- [Immunoprecipitation](#)
- [Flow Cytometry](#)
- [Cell Culture](#)

**ME2 Antibody (C-term) - References**

Loeber G., et al. J. Biol. Chem. 266:3016-3021(1991).  
Yanaihara N., et al. Genomics 72:169-179(2001).  
Ota T., et al. Nat. Genet. 36:40-45(2004).  
Nusbaum C., et al. Nature 437:551-555(2005).  
Mural R.J., et al. Submitted (JUL-2005) to the EMBL/GenBank/DDBJ databases.