

**ELANE**  
**Purified Mouse Monoclonal Antibody**  
**Catalog # AO2644a**

**Specification**

**ELANE - Product Information**

Application	<b>E, WB, FCM</b>
Primary Accession	<a href="#">P08246</a>
Reactivity	<b>Human, Rat</b>
Host	<b>Mouse</b>
Clonality	<b>Monoclonal</b>
Isotype	<b>Mouse IgG1</b>
Calculated MW	<b>28.5kDa KDa</b>

**Immunogen**

Purified recombinant fragment of human ELANE (AA: 140-267) expressed in E. Coli.

**Formulation**

Purified antibody in PBS with 0.05% sodium azide

**ELANE - Additional Information**

**Gene ID** 1991

**Other Names**

GE; NE; HLE; HNE; ELA2; SCN1; PMN-E

**Dilution**

E~~ 1/10000  
 WB~~ 1/500 - 1/2000  
 FCM~~ 1/200 - 1/400

**Storage**

Maintain refrigerated at 2-8°C for up to 6 months. For long term storage store at -20°C in small aliquots to prevent freeze-thaw cycles.

**Precautions**

ELANE is for research use only and not for use in diagnostic or therapeutic procedures.

**ELANE - Protein Information**

**Name** ELANE

**Synonyms** ELA2

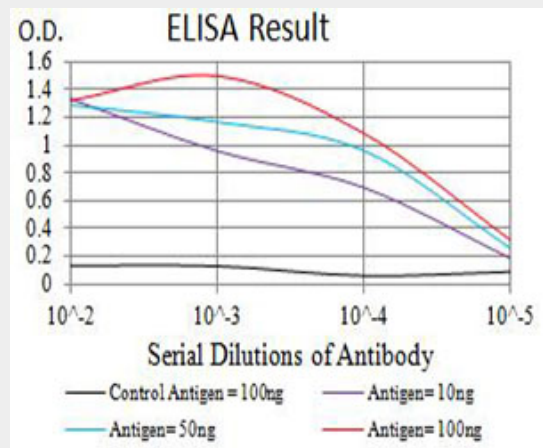


Figure 1: Black line: Control Antigen (100 ng); Purple line: Antigen (10ng); Blue line: Antigen (50 ng); Red line: Antigen (100 ng)

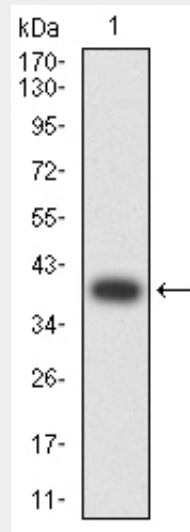


Figure 2: Western blot analysis using ELANE mAb against human ELANE (AA: 140-267) recombinant protein. (Expected MW is 39 kDa)

### Function

Modifies the functions of natural killer cells, monocytes and granulocytes. Inhibits C5a-dependent neutrophil enzyme release and chemotaxis (PubMed:<a href="http://www.uniprot.org/citations/15140022" target="\_blank">15140022</a>). Capable of killing E.coli but not S.aureus in vitro; digests outer membrane protein A (ompA) in E.coli and K.pneumoniae (PubMed:<a href="http://www.uniprot.org/citations/10947984" target="\_blank">10947984</a>).

### Cellular Location

Cytoplasmic vesicle, phagosome.  
Note=Localized in phagolysosomes following ingestion of E.coli by neutrophils

### Tissue Location

Bone marrow cells. Neutrophil (PubMed:10947984).

### ELANE - Protocols

Provided below are standard protocols that you may find useful for product applications.

- [Western Blot](#)
- [Blocking Peptides](#)
- [Dot Blot](#)
- [Immunohistochemistry](#)
- [Immunofluorescence](#)
- [Immunoprecipitation](#)

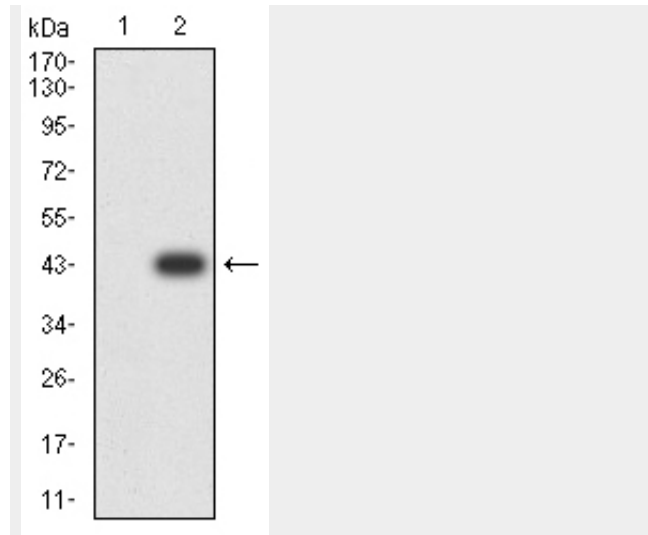


Figure 3:Western blot analysis using ELANE mAb against HEK293 (1) and ELANE (AA: 140-267)-hlgGfc transfected HEK293 (2) cell lysate.

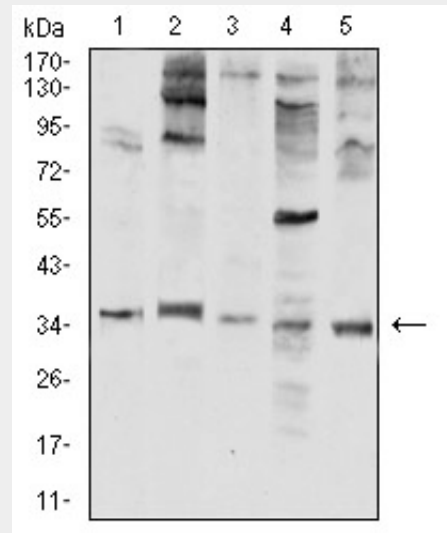


Figure 4:Western blot analysis using ELANE mouse mAb against HL-60 (1), THP-1 (2), MOLT4 (3), C6 (4), and K562 (5) cell lysate.

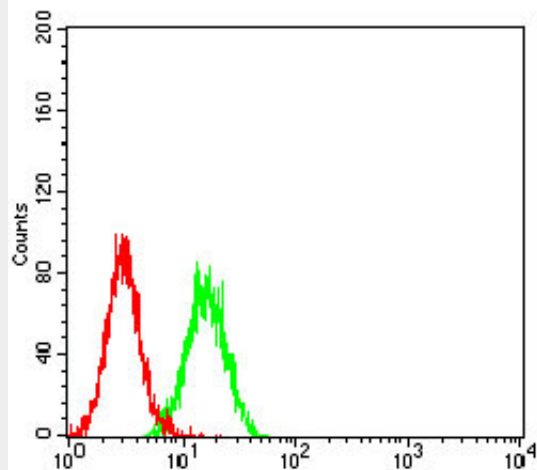


Figure 5: Flow cytometric analysis of K562 cells using ELANE mouse mAb (green) and negative control (red).

#### ELANE - References

1. *Pediatr Blood Cancer*. 2015 Dec;62(12):2229-31.
2. *Lung*. 2014 Aug;192(4):595-9.