

**MET10 Antibody (C-term)**  
**Affinity Purified Rabbit Polyclonal Antibody (Pab)**  
**Catalog # AP10007B**

**Specification**

**MET10 Antibody (C-term) - Product Information**

Application	WB, IHC-P,E
Primary Accession	<a href="#">Q86W50</a>
Other Accession	<a href="#">NP_076991.3</a>
Reactivity	Human, Mouse
Host	Rabbit
Clonality	Polyclonal
Isotype	Rabbit Ig
Antigen Region	444-472

**MET10 Antibody (C-term) - Additional Information**

**Gene ID** 79066

**Other Names**

Methyltransferase-like protein 16, 211-,  
Methyltransferase 10 domain-containing  
protein, METTL16, METT10D

**Target/Specificity**

This MET10 antibody is generated from rabbits immunized with a KLH conjugated synthetic peptide between 444-472 amino acids from the C-terminal region of human MET10.

**Dilution**

WB~~1:2000  
IHC-P~~1:100

**Format**

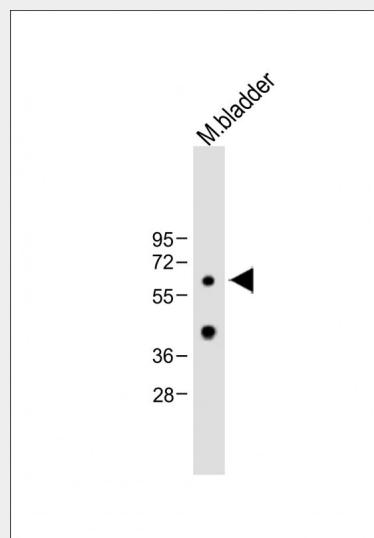
Purified polyclonal antibody supplied in PBS with 0.09% (W/V) sodium azide. This antibody is purified through a protein A column, followed by peptide affinity purification.

**Storage**

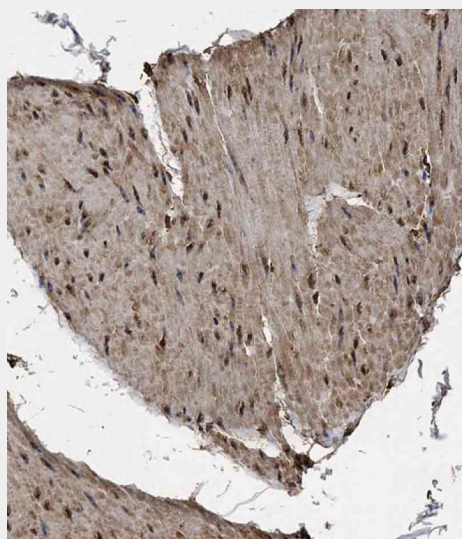
Maintain refrigerated at 2-8°C for up to 2 weeks. For long term storage store at -20°C in small aliquots to prevent freeze-thaw cycles.

**Precautions**

MET10 Antibody (C-term) is for research use only and not for use in diagnostic or



Anti-MET10 Antibody (C-term) at 1:2000 dilution + Mouse bladder lysate  
Lysates/proteins at 20 µg per lane.  
Secondary Goat Anti-Rabbit IgG, (H+L), Peroxidase conjugated at 1/10000 dilution.  
Predicted band size : 64 kDa  
Blocking/Dilution buffer: 5% NFDM/TBST.



Immunohistochemical analysis of AP10007B on paraffin-embedded Human bladder tissue. Tissue was fixed with formaldehyde at room temperature. Heat induced epitope retrieval

therapeutic procedures.

#### MET10 Antibody (C-term) - Protein Information

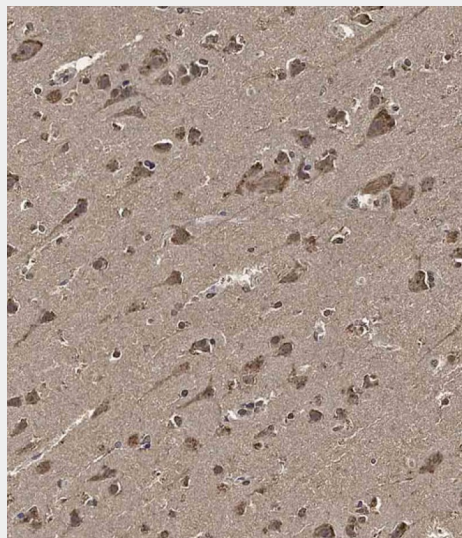
##### Name METTL16

{ECO:0000303|PubMed:27872311,  
ECO:0000312|HGNC:HGNC:28484}

##### Function

RNA N6-methyltransferase that methylates adenosine residues at the N(6) position of a subset of RNAs and is involved in S-adenosyl- L-methionine homeostasis by regulating expression of MAT2A transcripts (PubMed:<a href="http://www.uniprot.org/citations/28525753" target="\_blank">28525753</a>, PubMed:<a href="http://www.uniprot.org/citations/30197299" target="\_blank">30197299</a>, PubMed:<a href="http://www.uniprot.org/citations/30197297" target="\_blank">30197297</a>). Able to N6- methylate a subset of mRNAs and U6 small nuclear RNAs (U6 snRNAs) (PubMed:<a href="http://www.uniprot.org/citations/28525753" target="\_blank">28525753</a>). In contrast to the METTL3-METTL14 heterodimer, only able to methylate a limited number of RNAs: requires both a 5'UACAGAGAA-3' nonamer sequence and a specific RNA structure (PubMed:<a href="http://www.uniprot.org/citations/28525753" target="\_blank">28525753</a>, PubMed:<a href="http://www.uniprot.org/citations/30197299" target="\_blank">30197299</a>, PubMed:<a href="http://www.uniprot.org/citations/30197297" target="\_blank">30197297</a>). Plays a key role in S-adenosyl-L-methionine homeostasis by mediating N6-methylation of MAT2A mRNAs, altering splicing and/or stability of MAT2A transcripts: in presence of S-adenosyl-L-methionine, binds the 3'-UTR region of MAT2A mRNA and specifically N6-methylates the first hairpin of MAT2A mRNA, impairing MAT2A expression (PubMed:<a href="http://www.uniprot.org/citations/28525753" target="\_blank">28525753</a>). In S-adenosyl-L- methionine-limiting conditions, binds the 3'-UTR region of MAT2A mRNA but stalls due to the lack of a methyl donor, preventing N6-methylation

was performed by EDTA buffer (pH9. 0). Samples were incubated with primary antibody(1:100) for 1 hour at room temperature. Undiluted CRF Anti-Polyvalent HRP Polymer antibody was used as the secondary antibody.



Immunohistochemical analysis of AP10007B on paraffin-embedded Human brain tissue. Tissue was fixed with formaldehyde at room temperature. Heat induced epitope retrieval was performed by EDTA buffer (pH9. 0). Samples were incubated with primary antibody(1:100) for 1 hour at room temperature. Undiluted CRF Anti-Polyvalent HRP Polymer antibody was used as the secondary antibody.

and promoting expression of MAT2A (PubMed:<a href="http://www.uniprot.org/citations/28525753" target="\_blank">28525753</a>). In addition to mRNAs, also able to mediate N6-methylation of U6 small nuclear RNA (U6 snRNA): specifically N6-methylates adenine in position 43 of U6 snRNAs (PubMed:<a href="http://www.uniprot.org/citations/28525753" target="\_blank">28525753</a>, PubMed:<a href="http://www.uniprot.org/citations/29051200" target="\_blank">29051200</a>, PubMed:<a href="http://www.uniprot.org/citations/32266935" target="\_blank">32266935</a>). Also able to bind various lncRNAs, such as 7SK snRNA (7SK RNA) or 7SL RNA (PubMed:<a href="http://www.uniprot.org/citations/29051200" target="\_blank">29051200</a>). Specifically binds the 3'-end of the MALAT1 long non-coding RNA (PubMed:<a href="http://www.uniprot.org/citations/27872311" target="\_blank">27872311</a>).

#### **Cellular Location**

Nucleus. Cytoplasm

#### **MET10 Antibody (C-term) - Protocols**

Provided below are standard protocols that you may find useful for product applications.

- [Western Blot](#)
- [Blocking Peptides](#)
- [Dot Blot](#)
- [Immunohistochemistry](#)
- [Immunofluorescence](#)
- [Immunoprecipitation](#)
- [Flow Cytometry](#)
- [Cell Culture](#)