

**NXNL2 Antibody (Center)**  
**Affinity Purified Rabbit Polyclonal Antibody (Pab)**  
**Catalog # AP10565c**

**Specification**

**NXNL2 Antibody (Center) - Product Information**

|                   |   |
|-------------------|---|
| Application       | <b>WB, IHC-P,E</b>  |
| Primary Accession | <a href="#">Q5VZ03</a>  |
| Other Accession   | <a href="#">NP_660326.2</a> ,<br><a href="#">NP_001155097.1</a> |
| Reactivity        | <b>Human, Mouse</b>   |
| Host              | <b>Rabbit</b>   |
| Clonality         | <b>Polyclonal</b>   |
| Isotype           | <b>Rabbit Ig</b>  |
| Calculated MW     | <b>17614</b>  |
| Antigen Region    | <b>80-108</b>   |

**NXNL2 Antibody (Center) - Additional Information**

**Gene ID** 158046

**Other Names**

Nucleoredoxin-like protein 2, Rod-derived cone viability factor 2, RdCVF2, NXNL2, C9orf121

**Target/Specificity**

This NXNL2 antibody is generated from rabbits immunized with a KLH conjugated synthetic peptide between 80-108 amino acids from the Central region of human NXNL2.

**Dilution**

WB~~1:1000  
IHC-P~~1:50~100

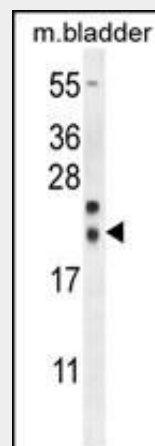
**Format**

Purified polyclonal antibody supplied in PBS with 0.09% (W/V) sodium azide. This antibody is purified through a protein A column, followed by peptide affinity purification.

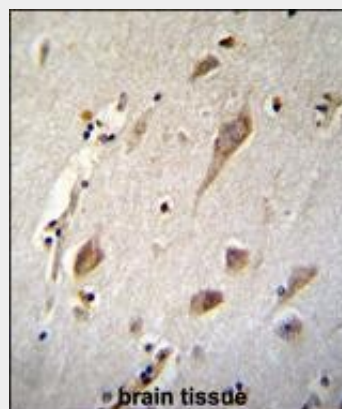
**Storage**

Maintain refrigerated at 2-8°C for up to 2 weeks. For long term storage store at -20°C in small aliquots to prevent freeze-thaw cycles.

**Precautions**



NXNL2 Antibody (Center) (Cat. #AP10565c) western blot analysis in mouse bladder tissue lysates (35ug/lane). This demonstrates the NXNL2 antibody detected the NXNL2 protein (arrow).



NXNL2 Antibody (Center) (Cat. #AP10565c) immunohistochemistry analysis in formalin fixed and paraffin embedded human brain tissue followed by peroxidase conjugation of the secondary antibody and DAB staining. This data demonstrates the use of NXNL2 Antibody (Center) for immunohistochemistry. Clinical relevance has not been evaluated.

**NXNL2 Antibody (Center) - Background**

NXNL2 Antibody (Center) is for research use only and not for use in diagnostic or therapeutic procedures.

The specific function of NXNL2 remains unknown.

#### **NXNL2 Antibody (Center) - Protein Information**

**Name** NXNL2

**Synonyms** C9orf121

#### **Function**

May be involved in the maintenance of both the function and the viability of sensory neurons, including photoreceptors and olfactory neurons.

#### **NXNL2 Antibody (Center) - Protocols**

Provided below are standard protocols that you may find useful for product applications.

- [Western Blot](#)
- [Blocking Peptides](#)
- [Dot Blot](#)
- [Immunohistochemistry](#)
- [Immunofluorescence](#)
- [Immunoprecipitation](#)
- [Flow Cytometry](#)
- [Cell Culture](#)