

**LACE1 Antibody (N-term)**  
**Affinity Purified Rabbit Polyclonal Antibody (Pab)**  
**Catalog # AP10615a**

**Specification**

**LACE1 Antibody (N-term) - Product Information**

Application	WB,E
Primary Accession	<a href="#">O8WV93</a>
Other Accession	<a href="#">NP_660358.2</a>
Reactivity	Human
Host	Rabbit
Clonality	Polyclonal
Isotype	Rabbit Ig
Calculated MW	54845
Antigen Region	68-96

**LACE1 Antibody (N-term) - Additional Information**

**Gene ID** 246269

**Other Names**

Lactation elevated protein 1, Protein AFG1 homolog, LACE1, AFG1

**Target/Specificity**

This LACE1 antibody is generated from rabbits immunized with a KLH conjugated synthetic peptide between 68-96 amino acids from the N-terminal region of human LACE1.

**Dilution**

WB~~1:1000

**Format**

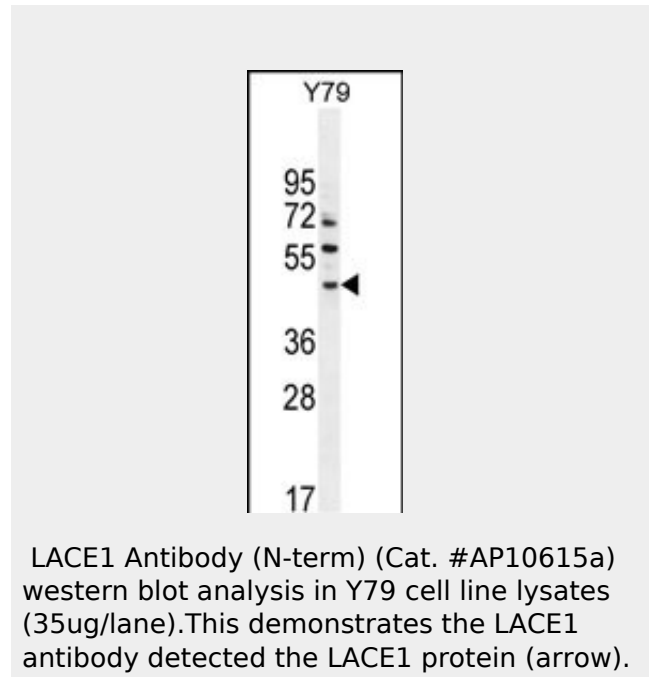
Purified polyclonal antibody supplied in PBS with 0.09% (W/V) sodium azide. This antibody is purified through a protein A column, followed by peptide affinity purification.

**Storage**

Maintain refrigerated at 2-8°C for up to 2 weeks. For long term storage store at -20°C in small aliquots to prevent freeze-thaw cycles.

**Precautions**

LACE1 Antibody (N-term) is for research use only and not for use in diagnostic or therapeutic procedures.



**LACE1 Antibody (N-term) - Background**

LACE1 encodes a protein with possible ATPase function.

The protein contains a P-loop motif and a five-domain structure that is conserved in fly, yeast, and bacteria. Two conserved estrogen receptor binding sites are located within 2.5 kb of this gene.

**LACE1 Antibody (N-term) - References**

- Bailey, S.D., et al. Diabetes Care (2010) In press :
- Rose, J.E., et al. Mol. Med. 16 (7-8), 247-253 (2010) :
- Talmud, P.J., et al. Am. J. Hum. Genet. 85(5):628-642(2009)
- Mattar, R., et al. Clin. Biochem. 41 (7-8), 628-630 (2008) :
- Abrahams, B.S., et al. Genomics 80(1):45-53(2002)

**LACE1 Antibody (N-term) - Protein Information**

**Name** AFG1L ([HGNC:16411](#))

**Function**

Putative mitochondrial ATPase. Plays a role in mitochondrial morphology and mitochondrial protein metabolism. Promotes degradation of excess nuclear-encoded complex IV subunits (COX4I1, COX5A and COX6A1) and normal activity of complexes III and IV of the respiratory chain (PubMed:[26759378](http://www.uniprot.org/citations/26759378), PubMed:[27323408](http://www.uniprot.org/citations/27323408)). Mediates mitochondrial translocation of TP53 and its transcription-independent apoptosis in response to genotoxic stress (PubMed:[27323408](http://www.uniprot.org/citations/27323408)).

**Cellular Location**

Mitochondrion membrane

**LACE1 Antibody (N-term) - Protocols**

Provided below are standard protocols that you may find useful for product applications.

- [Western Blot](#)
- [Blocking Peptides](#)
- [Dot Blot](#)
- [Immunohistochemistry](#)
- [Immunofluorescence](#)
- [Immunoprecipitation](#)
- [Flow Cytometry](#)
- [Cell Culture](#)