

ASB17 Antibody (C-term)
Affinity Purified Rabbit Polyclonal Antibody (Pab)
Catalog # AP10825b

Specification

ASB17 Antibody (C-term) - Product Information

Application	WB, IHC-P,E
Primary Accession	Q8WXJ9
Other Accession	Q95LR4 , NP_543144.1
Reactivity	Human, Mouse
Predicted	Monkey
Host	Rabbit
Clonality	Polyclonal
Isotype	Rabbit Ig
Antigen Region	181-209

ASB17 Antibody (C-term) - Additional Information

Gene ID 127247

Other Names

Ankyrin repeat and SOCS box protein 17,
ASB-17, ASB17

Target/Specificity

This ASB17 antibody is generated from rabbits immunized with a KLH conjugated synthetic peptide between 181-209 amino acids from the C-terminal region of human ASB17.

Dilution

WB~~1:2000
IHC-P~~1:50~100

Format

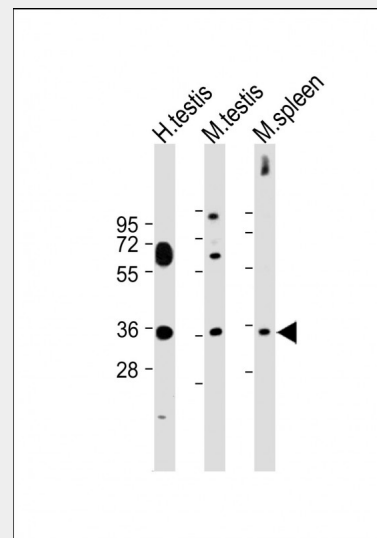
Purified polyclonal antibody supplied in PBS with 0.09% (W/V) sodium azide. This antibody is purified through a protein A column, followed by peptide affinity purification.

Storage

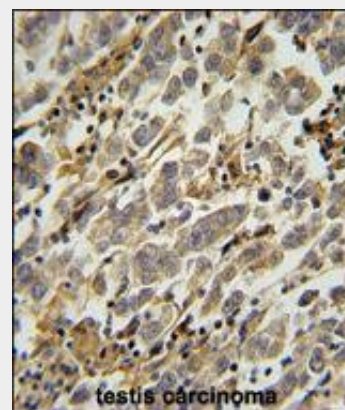
Maintain refrigerated at 2-8°C for up to 2 weeks. For long term storage store at -20°C in small aliquots to prevent freeze-thaw cycles.

Precautions

ASB17 Antibody (C-term) is for research use



All lanes : Anti-ASB17 Antibody (C-term) at 1:2000 dilution Lane 1: Human testis lysate Lane 2: Mouse testis lysate Lane 3: Mouse spleen lysate Lysates/proteins at 20 µg per lane. Secondary Goat Anti-Rabbit IgG, (H+L), Peroxidase conjugated at 1/10000 dilution. Predicted band size : 34 kDa Blocking/Dilution buffer: 5% NFDM/TBST.



ASB17 Antibody (C-term) (Cat. #AP10825b) immunohistochemistry analysis in formalin fixed and paraffin embedded human testis carcinoma followed by peroxidase conjugation of the secondary antibody and DAB staining. This data demonstrates the use of the ASB17 Antibody (C-term) for

only and not for use in diagnostic or therapeutic procedures.

immunohistochemistry. Clinical relevance has not been evaluated.

ASB17 Antibody (C-term) - Protein Information

Name ASB17

Function

May be a substrate-recognition component of a SCF-like ECS (Elongin-Cullin-SOCS-box protein) E3 ubiquitin-protein ligase complex which mediates the ubiquitination and subsequent proteasomal degradation of target proteins.

Tissue Location

Specifically expressed in testis. Not detected in other tissues tested.

ASB17 Antibody (C-term) - Protocols

Provided below are standard protocols that you may find useful for product applications.

- [Western Blot](#)
- [Blocking Peptides](#)
- [Dot Blot](#)
- [Immunohistochemistry](#)
- [Immunofluorescence](#)
- [Immunoprecipitation](#)
- [Flow Cytometry](#)
- [Cell Culture](#)

ASB17 Antibody (C-term) - Background

May be a substrate-recognition component of a SCF-like ECS (Elongin-Cullin-SOCS-box protein) E3 ubiquitin-protein ligase complex which mediates the ubiquitination and subsequent proteasomal degradation of target proteins (By similarity).

ASB17 Antibody (C-term) - References

Lamesch, P., et al. Genomics 89(3):307-315(2007)
Kohroki, J., et al. FEBS Lett. 579(30):6796-6802(2005)
Guo, J.H., et al. Arch. Androl. 50(3):155-161(2004)
Kile, B.T., et al. Trends Biochem. Sci. 27(5):235-241(2002)