

**KRT80 Antibody (C-term)**  
**Affinity Purified Rabbit Polyclonal Antibody (Pab)**  
**Catalog # AP10874b**

**Specification**

**KRT80 Antibody (C-term) - Product Information**

Application	WB,E
Primary Accession	<a href="#">O6KB66</a>
Other Accession	<a href="#">NP_872313.2</a>
Reactivity	Human
Host	Rabbit
Clonality	Polyclonal
Isotype	Rabbit Ig
Antigen Region	404-432

**KRT80 Antibody (C-term) - Additional Information**

**Gene ID** 144501

**Other Names**

Keratin, type II cytoskeletal 80,  
Cytokeratin-80, CK-80, Keratin-80, K80,  
Type-II keratin Kb20, KRT80, KB20

**Target/Specificity**

This KRT80 antibody is generated from rabbits immunized with a KLH conjugated synthetic peptide between 404-432 amino acids from the C-terminal region of human KRT80.

**Dilution**

WB~~1:1000

**Format**

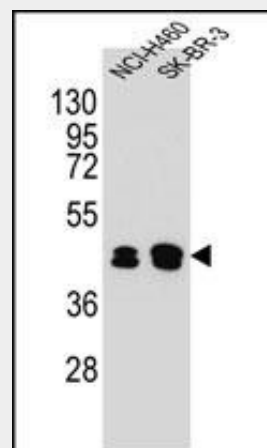
Purified polyclonal antibody supplied in PBS with 0.09% (W/V) sodium azide. This antibody is purified through a protein A column, followed by peptide affinity purification.

**Storage**

Maintain refrigerated at 2-8°C for up to 2 weeks. For long term storage store at -20°C in small aliquots to prevent freeze-thaw cycles.

**Precautions**

KRT80 Antibody (C-term) is for research use only and not for use in diagnostic or therapeutic procedures.



KRT80 Antibody (C-term) (Cat. #AP10874b) western blot analysis in NCI-H460,SK-BR-3 cell line lysates (35ug/lane).This demonstrates the KRT80 antibody detected the KRT80 protein (arrow).

**KRT80 Antibody (C-term) - Background**

Keratins are intermediate filament proteins responsible for the structural integrity of epithelial cells and are subdivided into epithelial keratins and hair keratins. This gene's expression profile shows that it encodes a type II epithelial keratin, although structurally the encoded protein is more like a type II hair keratin. This protein is involved in cell differentiation, localizing near desmosomal plaques in earlier stages of differentiation but then dispersing throughout the cytoplasm in terminally differentiating cells. The type II keratins are clustered in a region of chromosome 12q13. Two transcript variants encoding two different fully functional isoforms have been found for this gene.

**KRT80 Antibody (C-term) - Protein Information****Name** KRT80**Synonyms** KB20**Tissue Location**

Weakly expressed in tongue, but not skin or in any other tissues or organs examined.

**KRT80 Antibody (C-term) - References**

Langbein, L., et al. J. Biol. Chem.  
285(47):36909-36921(2010)  
Lamesch, P., et al. Genomics  
89(3):307-315(2007)  
Schweizer, J., et al. J. Cell Biol.  
174(2):169-174(2006)  
Rogers, M.A., et al. J. Invest. Dermatol.  
124(3):536-544(2005)

**KRT80 Antibody (C-term) - Protocols**

Provided below are standard protocols that you may find useful for product applications.

- [Western Blot](#)
- [Blocking Peptides](#)
- [Dot Blot](#)
- [Immunohistochemistry](#)
- [Immunofluorescence](#)
- [Immunoprecipitation](#)
- [Flow Cytometry](#)
- [Cell Culture](#)