

**FOSL2 Antibody (Center)**  
**Affinity Purified Rabbit Polyclonal Antibody (Pab)**  
**Catalog # AP10972c**

**Specification**

**FOSL2 Antibody (Center) - Product Information**

Application	WB, IHC-P,E
Primary Accession	<a href="#">P15408</a>
Other Accession	<a href="#">P51145</a> , <a href="#">P47930</a> , <a href="#">P18625</a> , <a href="#">NP_005244.1</a>
Reactivity Predicted	Human, Hamster Chicken, Mouse, Rat
Host	Rabbit
Clonality	Polyclonal
Isotype	Rabbit Ig
Calculated MW	35193
Antigen Region	95-122

**FOSL2 Antibody (Center) - Additional Information**

**Gene ID** 2355

**Other Names**

Fos-related antigen 2, FRA-2, FOSL2, FRA2

**Target/Specificity**

This FOSL2 antibody is generated from rabbits immunized with a KLH conjugated synthetic peptide between 95-122 amino acids from the Central region of human FOSL2.

**Dilution**

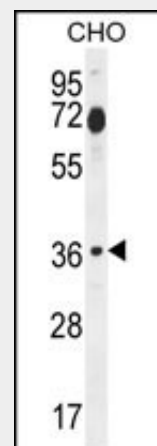
WB~~1:1000  
IHC-P~~1:50~100

**Format**

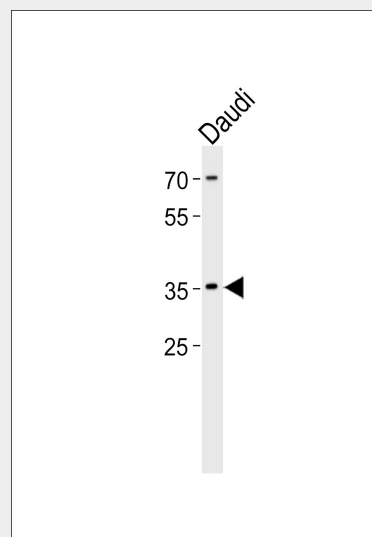
Purified polyclonal antibody supplied in PBS with 0.09% (W/V) sodium azide. This antibody is purified through a protein A column, followed by peptide affinity purification.

**Storage**

Maintain refrigerated at 2-8°C for up to 2 weeks. For long term storage store at -20°C in small aliquots to prevent freeze-thaw cycles.



FOSL2 Antibody (Center) (Cat. #AP10972c) western blot analysis in CHO cell line lysates (35ug/lane). This demonstrates the FOSL2 antibody detected the FOSL2 protein (arrow).



Western blot analysis of lysate from Daudi cell line, using FOSL2 Antibody (Center)(Cat. #AP10972c). AP10972c was diluted at 1:1000. A goat anti-rabbit IgG H&L(HRP) at 1:5000 dilution was used as the secondary antibody. Lysate at 35ug.

### Precautions

FOSL2 Antibody (Center) is for research use only and not for use in diagnostic or therapeutic procedures.

### FOSL2 Antibody (Center) - Protein Information

**Name** FOSL2

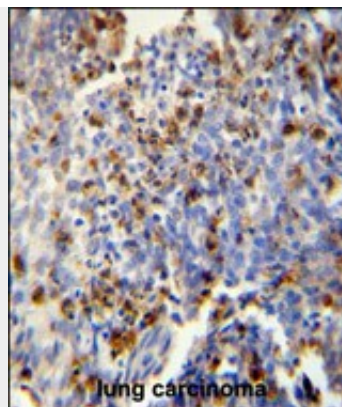
**Synonyms** FRA2

### Function

Controls osteoclast survival and size. As a dimer with JUN, activates LIF transcription. Activates CEBPB transcription in PGE2-activated osteoblasts.

### Cellular Location

Nucleus.



FOSL2 antibody (Center) (Cat. #AP10972c) immunohistochemistry analysis in formalin fixed and paraffin embedded human lung carcinoma followed by peroxidase conjugation of the secondary antibody and DAB staining. This data demonstrates the use of the FOSL2 antibody (Center) for immunohistochemistry. Clinical relevance has not been evaluated.

### FOSL2 Antibody (Center) - Protocols

Provided below are standard protocols that you may find useful for product applications.

- [Western Blot](#)
- [Blocking Peptides](#)
- [Dot Blot](#)
- [Immunohistochemistry](#)
- [Immunofluorescence](#)
- [Immunoprecipitation](#)
- [Flow Cytometry](#)
- [Cell Culture](#)

### FOSL2 Antibody (Center) - Background

The Fos gene family consists of 4 members: FOS, FOSB, FOSL1, and FOSL2. These genes encode leucine zipper proteins that can dimerize with proteins of the JUN family, thereby forming the transcription factor complex AP-1. As such, the FOS proteins have been implicated as regulators of cell proliferation, differentiation, and transformation.

### FOSL2 Antibody (Center) - References

Bozec, A., et al. J. Cell Biol. 190(6):1093-1106(2010)  
 Bolat, I., et al. Folia Histochem. Cytobiol. 48(2):197-201(2010)  
 Reich, N., et al. Arthritis Rheum. 62(1):280-290(2010)  
 Maurer, B., et al. Circulation 120(23):2367-2376(2009)  
 Tabakoff, B., et al. BMC Biol. 7, 70 (2009) :