

CI150 Antibody (N-term)
Affinity Purified Rabbit Polyclonal Antibody (Pab)
Catalog # AP11051a

Specification

CI150 Antibody (N-term) - Product Information

Application	WB, IHC-P, FC,E
Primary Accession	O8IV03
Other Accession	NP_981948.1
Reactivity	Human
Host	Rabbit
Clonality	Polyclonal
Isotype	Rabbit Ig
Calculated MW	24583
Antigen Region	11-40

CI150 Antibody (N-term) - Additional Information

Gene ID 286343

Other Names

Leucine rich adaptor protein 1-like,
LURAP1L, C9orf150

Target/Specificity

This CI150 antibody is generated from rabbits immunized with a KLH conjugated synthetic peptide between 11-40 amino acids from the N-terminal region of human CI150.

Dilution

WB~~1:1000
IHC-P~~1:50~100
FC~~1:10~50

Format

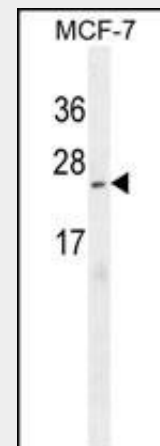
Purified polyclonal antibody supplied in PBS with 0.09% (W/V) sodium azide. This antibody is purified through a protein A column, followed by peptide affinity purification.

Storage

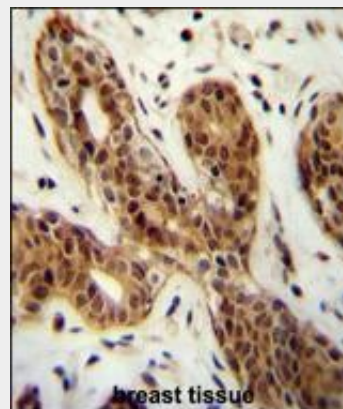
Maintain refrigerated at 2-8°C for up to 2 weeks. For long term storage store at -20°C in small aliquots to prevent freeze-thaw cycles.

Precautions

CI150 Antibody (N-term) is for research use



CI150 Antibody (N-term) (Cat. #AP11051a) western blot analysis in MCF-7 cell line lysates (35ug/lane). This demonstrates the CI150 antibody detected the CI150 protein (arrow).



CI150 Antibody (N-term) (Cat. #AP11051a) immunohistochemistry analysis in formalin fixed and paraffin embedded human breast tissue followed by peroxidase conjugation of the secondary antibody and DAB staining. This data demonstrates the use of the CI150 Antibody (N-term) for immunohistochemistry. Clinical relevance has not been evaluated.

only and not for use in diagnostic or therapeutic procedures.

CI150 Antibody (N-term) - Protein Information

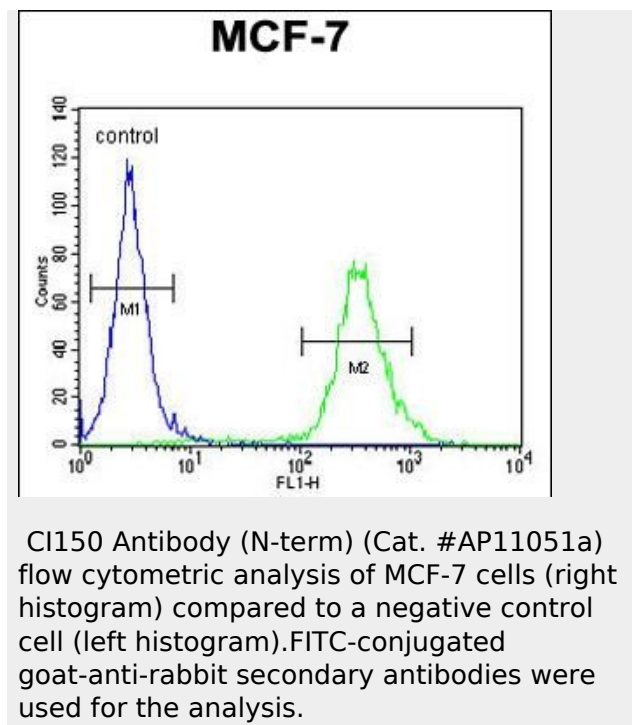
Name LURAP1L

Synonyms C9orf150

CI150 Antibody (N-term) - Protocols

Provided below are standard protocols that you may find useful for product applications.

- [Western Blot](#)
- [Blocking Peptides](#)
- [Dot Blot](#)
- [Immunohistochemistry](#)
- [Immunofluorescence](#)
- [Immunoprecipitation](#)
- [Flow Cytometry](#)
- [Cell Culture](#)



CI150 Antibody (N-term) - References

Yamada, S., et al. *Oncogene* 23(35):5901-5911(2004)
Humphray, S.J., et al. *Nature* 429(6990):369-374(2004)
Tomarev, S.I., et al. *Invest. Ophthalmol. Vis. Sci.* 44(6):2588-2596(2003)