

BTF3 Antibody (N-term)
Affinity Purified Rabbit Polyclonal Antibody (Pab)
Catalog # AP11100a

Specification

BTF3 Antibody (N-term) - Product Information

Application	WB,E
Primary Accession	P20290
Other Accession	NP_001198.2 , NP_001032726.1
Reactivity	Human, Mouse
Host	Rabbit
Clonality	Polyclonal
Isotype	Rabbit Ig
Calculated MW	22168
Antigen Region	1-30

BTF3 Antibody (N-term) - Additional Information

Gene ID 689

Other Names

Transcription factor BTF3, Nascent polypeptide-associated complex subunit beta, NAC-beta, RNA polymerase B transcription factor 3, BTF3, NACB

Target/Specificity

This BTF3 antibody is generated from rabbits immunized with a KLH conjugated synthetic peptide between 1-30 amino acids from the N-terminal region of human BTF3.

Dilution

WB~~1:1000

Format

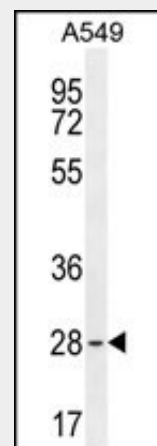
Purified polyclonal antibody supplied in PBS with 0.09% (W/V) sodium azide. This antibody is purified through a protein A column, followed by peptide affinity purification.

Storage

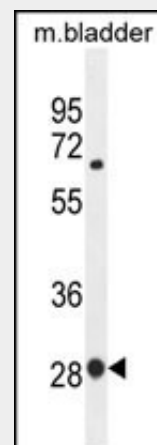
Maintain refrigerated at 2-8°C for up to 2 weeks. For long term storage store at -20°C in small aliquots to prevent freeze-thaw cycles.

Precautions

BTF3 Antibody (N-term) is for research use



BTF3 Antibody (N-term) (Cat. #AP11100a) western blot analysis in A549 cell line lysates (35ug/lane). This demonstrates the BTF3 antibody detected the BTF3 protein (arrow).



BTF3 Antibody (N-term) (Cat. #AP11100a) western blot analysis in mouse bladder tissue lysates (35ug/lane). This demonstrates the BTF3 antibody detected the BTF3 protein (arrow).

BTF3 Antibody (N-term) - Background

This gene encodes the basic transcription factor 3. This protein forms a stable complex with RNA polymerase IIB and is

only and not for use in diagnostic or therapeutic procedures.

BTF3 Antibody (N-term) - Protein Information

Name BTF3

Synonyms NACB

Function

When associated with NACA, prevents inappropriate targeting of non-secretory polypeptides to the endoplasmic reticulum (ER). Binds to nascent polypeptide chains as they emerge from the ribosome and blocks their interaction with the signal recognition particle (SRP), which normally targets nascent secretory peptides to the ER. BTF3 is also a general transcription factor that can form a stable complex with RNA polymerase II. Required for the initiation of transcription.

Cellular Location

Cytoplasm. Nucleus. Note=The heterodimer with NACA is cytoplasmic

required for transcriptional initiation.

Alternative splicing

results in multiple transcript variants encoding different

isoforms. This gene has multiple pseudogenes.

BTF3 Antibody (N-term) - References

Green, C.D., et al. Mol. Cancer Res.

5(11):1191-1200(2007)

Matsuoka, S., et al. Science

316(5828):1160-1166(2007)

Kusumawidjaja, G., et al. Cancer Biol. Ther.

6(3):367-376(2007)

Freire, M.A. Gene 345(2):271-277(2005)

Harrington, J.J., et al. Nat. Biotechnol.

19(5):440-445(2001)

BTF3 Antibody (N-term) - Protocols

Provided below are standard protocols that you may find useful for product applications.

- [Western Blot](#)
- [Blocking Peptides](#)
- [Dot Blot](#)
- [Immunohistochemistry](#)
- [Immunofluorescence](#)
- [Immunoprecipitation](#)
- [Flow Cytometry](#)
- [Cell Culture](#)