

GAB4 Antibody (N-term)
Affinity Purified Rabbit Polyclonal Antibody (Pab)
Catalog # AP11515a

Specification

GAB4 Antibody (N-term) - Product Information

| | |
|-------------------|--------------------------------|
| Application | WB, FC,E |
| Primary Accession | O2WGN9 |
| Other Accession | NP_001032903.1 |
| Reactivity | Human |
| Host | Rabbit |
| Clonality | Polyclonal |
| Isotype | Rabbit Ig |
| Calculated MW | 62367 |
| Antigen Region | 64-92 |

GAB4 Antibody (N-term) - Additional Information

Gene ID 128954

Other Names

GRB2-associated-binding protein 4,
GRB2-associated binder 2-like, GAB2-like,
GRB2-associated binder 4,
GRB2-associated-binding protein 2-like,
Growth factor receptor bound protein
2-associated protein 4, GAB4

Target/Specificity

This GAB4 antibody is generated from rabbits immunized with a KLH conjugated synthetic peptide between 64-92 amino acids from the N-terminal region of human GAB4.

Dilution

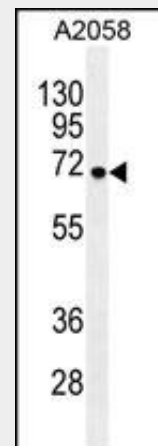
WB~~1:1000
FC~~1:10~50

Format

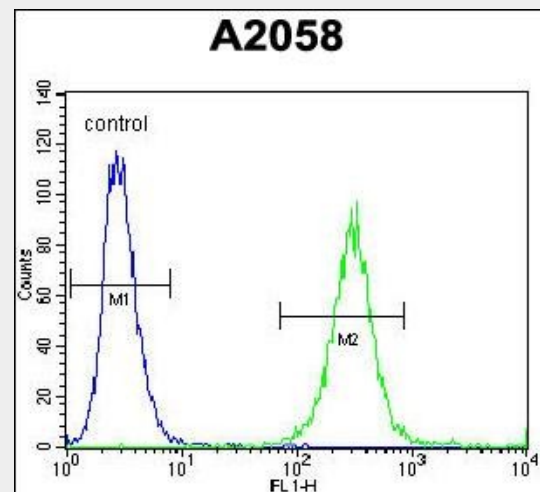
Purified polyclonal antibody supplied in PBS with 0.09% (W/V) sodium azide. This antibody is purified through a protein A column, followed by peptide affinity purification.

Storage

Maintain refrigerated at 2-8°C for up to 2 weeks. For long term storage store at -20°C in small aliquots to prevent freeze-thaw cycles.



GAB4 Antibody (N-term) (Cat. #AP11515a) western blot analysis in A2058 cell line lysates (35ug/lane). This demonstrates the GAB4 antibody detected the GAB4 protein (arrow).



GAB4 Antibody (N-term) (Cat. #AP11515a) flow cytometric analysis of A2058 cells (right histogram) compared to a negative control cell (left histogram). FITC-conjugated goat-anti-rabbit secondary antibodies were used for the analysis.

GAB4 Antibody (N-term) - References

Precautions

GAB4 Antibody (N-term) is for research use only and not for use in diagnostic or therapeutic procedures.

Trynka, G., et al. Gut 58(8):1078-1083(2009)

GAB4 Antibody (N-term) - Protein Information

Name GAB4

GAB4 Antibody (N-term) - Protocols

Provided below are standard protocols that you may find useful for product applications.

- [Western Blot](#)
- [Blocking Peptides](#)
- [Dot Blot](#)
- [Immunohistochemistry](#)
- [Immunofluorescence](#)
- [Immunoprecipitation](#)
- [Flow Cytometry](#)
- [Cell Culture](#)