

**CA115 Antibody (Center)**  
**Affinity Purified Rabbit Polyclonal Antibody (Pab)**  
**Catalog # AP11526c**

**Specification**

**CA115 Antibody (Center) - Product Information**

Application	<b>WB,E</b>
Primary Accession	<a href="#">Q9H7X2</a>
Other Accession	<a href="#">NP_078985.3</a>
Reactivity	<b>Human</b>
Host	<b>Rabbit</b>
Clonality	<b>Polyclonal</b>
Isotype	<b>Rabbit Ig</b>
Calculated MW	<b>15517</b>
Antigen Region	<b>76-104</b>

**CA115 Antibody (Center) - Additional Information**

**Gene ID** 79762

**Other Names**

Uncharacterized protein C1orf115, C1orf115

**Target/Specificity**

This CA115 antibody is generated from rabbits immunized with a KLH conjugated synthetic peptide between 76-104 amino acids from the Central region of human CA115.

**Dilution**

WB~~1:1000

**Format**

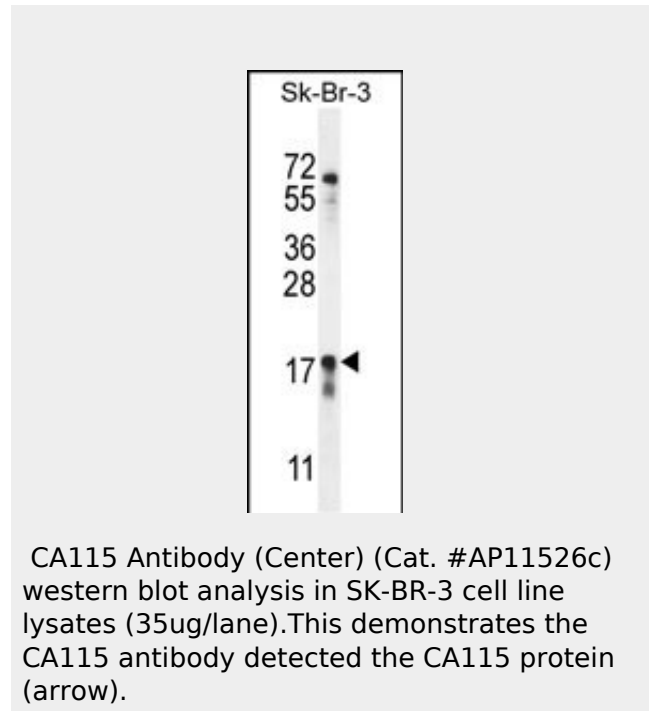
Purified polyclonal antibody supplied in PBS with 0.09% (W/V) sodium azide. This antibody is purified through a protein A column, followed by peptide affinity purification.

**Storage**

Maintain refrigerated at 2-8°C for up to 2 weeks. For long term storage store at -20°C in small aliquots to prevent freeze-thaw cycles.

**Precautions**

CA115 Antibody (Center) is for research use only and not for use in diagnostic or therapeutic procedures.



**CA115 Antibody (Center) - References**

Aberg, K., et al. Biol. Psychiatry (2009) In press :

**CA115 Antibody (Center) - Protein Information****Name** C1orf115**Cellular Location**

Membrane; Single-pass membrane protein

**CA115 Antibody (Center) - Protocols**

Provided below are standard protocols that you may find useful for product applications.

- [Western Blot](#)
- [Blocking Peptides](#)
- [Dot Blot](#)
- [Immunohistochemistry](#)
- [Immunofluorescence](#)
- [Immunoprecipitation](#)
- [Flow Cytometry](#)
- [Cell Culture](#)