

PABPN1L Antibody (Center)
Affinity Purified Rabbit Polyclonal Antibody (Pab)
Catalog # AP11914c

Specification

PABPN1L Antibody (Center) - Product Information

| | |
|-------------------------|---|
| Application | IF, WB, IHC-P, FC,E |
| Primary Accession | A6NDY0 |
| Other Accession | B0BNE4 , Q5XFER0 , Q6TY21 , Q804A5 , NP_001073956 |
| Reactivity Predicted | Human Xenopus, Mouse, Rat |
| Host | Rabbit |
| Clonality | Polyclonal |
| Isotype | Rabbit Ig |
| Calculated MW | 30386 |
| Antigen Region | 166-194 |

PABPN1L Antibody (Center) - Additional Information

Gene ID 390748

Other Names

Embryonic polyadenylate-binding protein 2,
Embryonic poly(A)-binding protein 2,
ePABP-2, ePABP2, Embryonic
poly(A)-binding protein type II,
Poly(A)-binding protein nuclear-like 1,
PABPN1L, EPABP2, PABPNL1

Target/Specificity

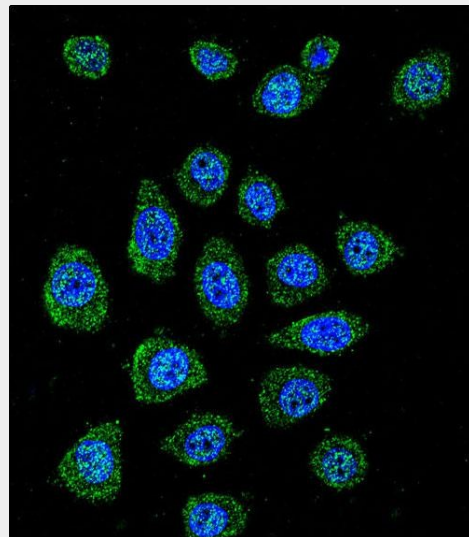
This PABPN1L antibody is generated from rabbits immunized with a KLH conjugated synthetic peptide between 166-194 amino acids from the Central region of human PABPN1L.

Dilution

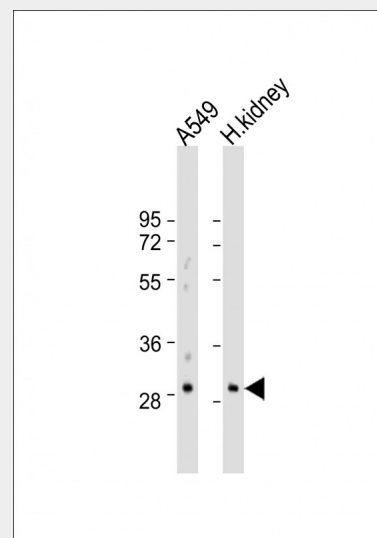
IF~~1:10~50
WB~~1:500-1:1000
IHC-P~~1:10~50
FC~~1:10~50

Format

Purified polyclonal antibody supplied in PBS with 0.09% (W/V) sodium azide. This antibody is purified through a protein A



Confocal immunofluorescent analysis of PABPN1L Antibody (Center)(Cat#AP11914c) with A549 cell followed by Alexa Fluor 488-conjugated goat anti-rabbit IgG (green). DAPI was used to stain the cell nuclear (blue).



All lanes : Anti-PABPN1L Antibody (Center) at 1:500-1:1000 dilution Lane 1: A549 whole cell lysate Lane 2: human kidney lysate Lysates/proteins at 20 µg per lane. Secondary Goat Anti-Rabbit IgG, (H+L), Peroxidase conjugated at 1/10000 dilution.

column, followed by peptide affinity purification.

Storage

Maintain refrigerated at 2-8°C for up to 2 weeks. For long term storage store at -20°C in small aliquots to prevent freeze-thaw cycles.

Precautions

PABPN1L Antibody (Center) is for research use only and not for use in diagnostic or therapeutic procedures.

PABPN1L Antibody (Center) - Protein Information

Name PABPN1L

Synonyms EPABP2, PABPNL1

Function

Binds the poly(A) tail of mRNA.

Cellular Location

Cytoplasm.

Tissue Location

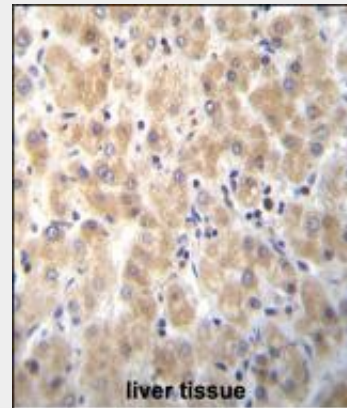
Expressed in various adult tissues.

PABPN1L Antibody (Center) - Protocols

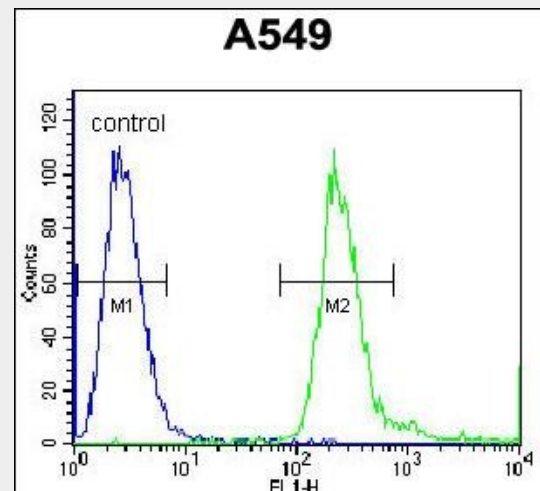
Provided below are standard protocols that you may find useful for product applications.

- [Western Blot](#)
- [Blocking Peptides](#)
- [Dot Blot](#)
- [Immunohistochemistry](#)
- [Immunofluorescence](#)
- [Immunoprecipitation](#)
- [Flow Cytometry](#)
- [Cell Culture](#)

Predicted band size : 30 kDa
Blocking/Dilution buffer: 5% NFDM/TBST.



PABPN1L Antibody (Center) (Cat. #AP11914c) immunohistochemistry analysis in formalin fixed and paraffin embedded human liver tissue followed by peroxidase conjugation of the secondary antibody and DAB staining. This data demonstrates the use of PABPN1L Antibody (Center) for immunohistochemistry. Clinical relevance has not been evaluated.



PABPN1L Antibody (Center) (Cat. #AP11914c) flow cytometric analysis of A549 cells (right histogram) compared to a negative control cell (left histogram). FITC-conjugated goat-anti-rabbit secondary antibodies were used for the analysis.

PABPN1L Antibody (Center) - Background

The function of this protein remains unknown.