

PCDH1 Antibody (N-term)
Affinity Purified Rabbit Polyclonal Antibody (Pab)
Catalog # AP12019a

Specification

PCDH1 Antibody (N-term) - Product Information

Application	IF, WB, IHC-P,E
Primary Accession	Q08174
Other Accession	NP_115796.2
Reactivity	Human
Host	Rabbit
Clonality	Polyclonal
Isotype	Rabbit Ig
Calculated MW	114743
Antigen Region	179-206

PCDH1 Antibody (N-term) - Additional Information

Gene ID 5097

Other Names

Protocadherin-1, Cadherin-like protein 1, Protocadherin-42, PC42, PCDH1

Target/Specificity

This PCDH1 antibody is generated from rabbits immunized with a KLH conjugated synthetic peptide between 179-206 amino acids from the N-terminal region of human PCDH1.

Dilution

IF~~1:10~50
WB~~1:1000
IHC-P~~1:10~50

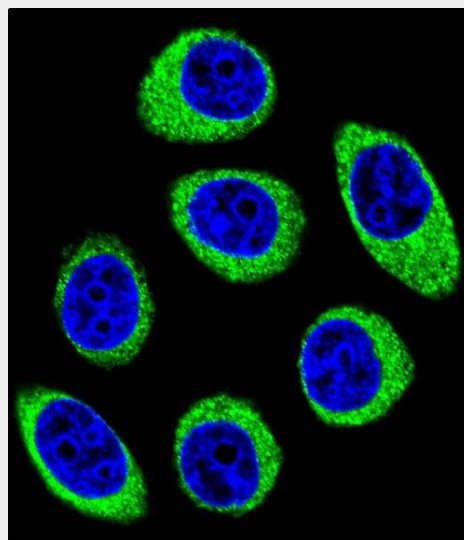
Format

Purified polyclonal antibody supplied in PBS with 0.09% (W/V) sodium azide. This antibody is purified through a protein A column, followed by peptide affinity purification.

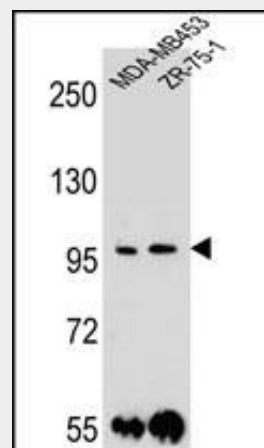
Storage

Maintain refrigerated at 2-8°C for up to 2 weeks. For long term storage store at -20°C in small aliquots to prevent freeze-thaw cycles.

Precautions



Confocal immunofluorescent analysis of PCDH1 Antibody (N-term)(Cat#AP12019a) with U-251MG cell followed by Alexa Fluor 488-conjugated goat anti-rabbit IgG (green). DAPI was used to stain the cell nuclear (blue).



PCDH1 Antibody (N-term) (Cat. #AP12019a) western blot analysis in MDA-MB453,ZR-75-1 cell line lysates (35ug/lane).This demonstrates the PCDH1 antibody detected the PCDH1 protein (arrow).

PCDH1 Antibody (N-term) is for research use only and not for use in diagnostic or therapeutic procedures.

PCDH1 Antibody (N-term) - Protein Information

Name PCDH1

Function

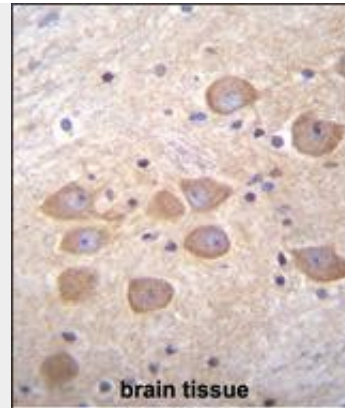
May be involved in cell-cell interaction processes and in cell adhesion.

Cellular Location

Cell junction. Cell membrane; Single-pass type I membrane protein. Note=Found at cell- cell boundaries and probably at cell-matrix boundaries

Tissue Location

Highly expressed in the brain and neuro-glial cells



PCDH1 Antibody (N-term) (Cat. #AP12019a) immunohistochemistry analysis in formalin fixed and paraffin embedded human brain tissue followed by peroxidase conjugation of the secondary antibody and DAB staining. This data demonstrates the use of PCDH1 Antibody (N-term) for immunohistochemistry. Clinical relevance has not been evaluated.

PCDH1 Antibody (N-term) - Protocols

Provided below are standard protocols that you may find useful for product applications.

- [Western Blot](#)
- [Blocking Peptides](#)
- [Dot Blot](#)
- [Immunohistochemistry](#)
- [Immunofluorescence](#)
- [Immunoprecipitation](#)
- [Flow Cytometry](#)
- [Cell Culture](#)

PCDH1 Antibody (N-term) - Background

This gene belongs to the protocadherin subfamily within the cadherin superfamily. The encoded protein is a membrane protein found at cell-cell boundaries. It is involved in neural cell adhesion, suggesting a possible role in neuronal development. The protein includes an extracellular region, containing 7 cadherin-like domains, a transmembrane region and a C-terminal cytoplasmic region. Cells expressing the protein showed cell aggregation activity. Alternative splicing occurs in this gene.

PCDH1 Antibody (N-term) - References

- Koppelman, G.H., et al. Am. J. Respir. Crit. Care Med. 180(10):929-935(2009)
Rush, J., et al. Nat. Biotechnol. 23(1):94-101(2005)
Ballif, B.A., et al. Mol. Cell Proteomics 3(11):1093-1101(2004)
Ballif, B.A., et al. Mol. Cell Proteomics 3(11):1093-1101(2004)
Colland, F., et al. Genome Res. 14(7):1324-1332(2004)