

RBPM2 Antibody (Center)
Affinity Purified Rabbit Polyclonal Antibody (Pab)
Catalog # AP12121c

Specification

RBPM2 Antibody (Center) - Product Information

Application	WB, IHC-P,E
Primary Accession	Q6ZRY4
Other Accession	Q9YGP5 , Q9W6I1 , NP_919248.1 , Q6DH13
Reactivity Predicted	Mouse Zebrafish, Chicken, Xenopus
Host	Rabbit
Clonality	Polyclonal
Isotype	Rabbit Ig
Calculated MW	22497
Antigen Region	113-141

RBPM2 Antibody (Center) - Additional Information

Gene ID 348093

Other Names

RNA-binding protein with multiple splicing 2, RBPM2

Target/Specificity

This RBPM2 antibody is generated from rabbits immunized with a KLH conjugated synthetic peptide between 113-141 amino acids from the Central region of human RBPM2.

Dilution

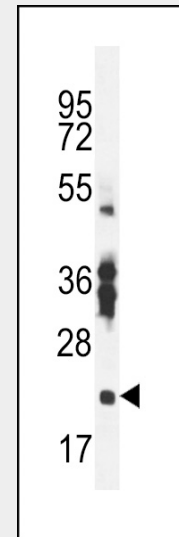
WB~~1:1000
IHC-P~~1:10~50

Format

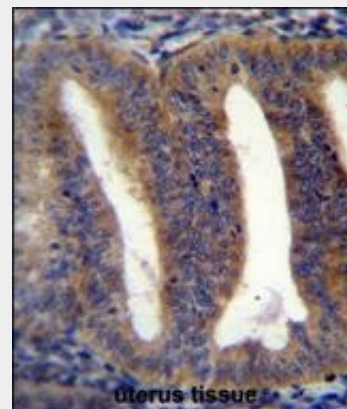
Purified polyclonal antibody supplied in PBS with 0.09% (W/V) sodium azide. This antibody is purified through a protein A column, followed by peptide affinity purification.

Storage

Maintain refrigerated at 2-8°C for up to 2 weeks. For long term storage store at -20°C in small aliquots to prevent freeze-thaw



RBPM2 Antibody (Center) (Cat. #AP12121c) western blot analysis in mouse stomach tissue lysates (35ug/lane).This demonstrates the RBPM2 antibody detected the RBPM2 protein (arrow).



RBPM2 Antibody (Center) (Cat. #AP12121c)immunohistochemistry analysis in formalin fixed and paraffin embedded human uterus tissue followed by peroxidase conjugation of the secondary antibody and DAB staining.This data demonstrates the use of RBPM2 Antibody (Center) for immunohistochemistry. Clinical relevance has not been evaluated.

cycles.

Precautions

RBPM2 Antibody (Center) is for research use only and not for use in diagnostic or therapeutic procedures.

RBPM2 Antibody (Center) - Protein Information

Name RBPM2

Function

RNA-binding protein involved in the regulation of smooth muscle cell differentiation and proliferation in the gastrointestinal system (PubMed:25064856). Binds NOG mRNA, the major inhibitor of the bone morphogenetic protein (BMP) pathway. Mediates an increase of NOG mRNA levels, thereby contributing to the negative regulation of BMP signaling pathway and promoting reversible dedifferentiation and proliferation of smooth muscle cells (By similarity).

Cellular Location

Cytoplasm.

RBPM2 Antibody (Center) - Protocols

Provided below are standard protocols that you may find useful for product applications.

- [Western Blot](#)
- [Blocking Peptides](#)
- [Dot Blot](#)
- [Immunohistochemistry](#)
- [Immunofluorescence](#)
- [Immunoprecipitation](#)
- [Flow Cytometry](#)
- [Cell Culture](#)

RBPM2 Antibody (Center) - Background

RBPM2 contains one RRM (RNA recognition motif) domain. The exact function of RBPM2 remains unknown.

RBPM2 Antibody (Center) - References

Strausberg, R.L., et al. Proc. Natl. Acad. Sci. U.S.A. 99(26):16899-16903(2002)