

FGL1 Antibody (C-term)
Affinity Purified Rabbit Polyclonal Antibody (Pab)
Catalog # AP12647b

Specification

FGL1 Antibody (C-term) - Product Information

| | |
|-------------------|--|
| Application | WB, IHC-P,E |
| Primary Accession | Q08830 |
| Other Accession | NP_671736.2 , NP_963847.1 |
| Reactivity | Human |
| Host | Rabbit |
| Clonality | Polyclonal |
| Isotype | Rabbit Ig |
| Calculated MW | 36379 |
| Antigen Region | 218-247 |

FGL1 Antibody (C-term) - Additional Information

Gene ID 2267

Other Names

Fibrinogen-like protein 1, HP-041, Hepassocin, Hepatocyte-derived fibrinogen-related protein 1, HFREP-1, Liver fibrinogen-related protein 1, LFIRE-1, FGL1, HFREP1

Target/Specificity

This FGL1 antibody is generated from rabbits immunized with a KLH conjugated synthetic peptide between 218-247 amino acids from the C-terminal region of human FGL1.

Dilution

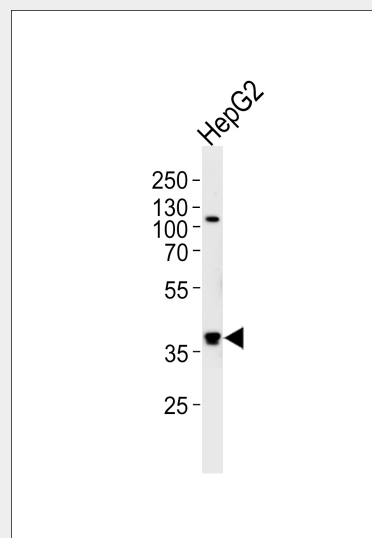
WB~~1:1000
IHC-P~~1:10~50

Format

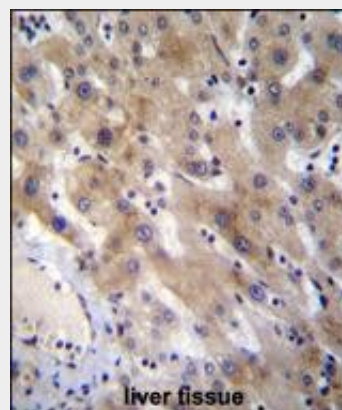
Purified polyclonal antibody supplied in PBS with 0.09% (W/V) sodium azide. This antibody is purified through a protein A column, followed by peptide affinity purification.

Storage

Maintain refrigerated at 2-8°C for up to 2 weeks. For long term storage store at -20°C in small aliquots to prevent freeze-thaw cycles.



Western blot analysis of lysate from HepG2 cell line, using FGL1 Antibody (C-term)(Cat. #AP12647b). AP12647b was diluted at 1:1000 at each lane. A goat anti-rabbit IgG H&L(HRP) at 1:5000 dilution was used as the secondary antibody. Lysate at 35ug per lane.



FGL1 Antibody (C-term) (Cat. #AP12647b)immunohistochemistry analysis in formalin fixed and paraffin embedded human liver tissue followed by peroxidase conjugation of the secondary antibody and DAB staining.This data demonstrates the use of FGL1 Antibody (C-term) for immunohistochemistry. Clinical relevance has not been evaluated.

Precautions

FGL1 Antibody (C-term) is for research use only and not for use in diagnostic or therapeutic procedures.

FGL1 Antibody (C-term) - Protein Information**Name** FGL1

{ECO:0000303|PubMed:18039467,
ECO:0000312|HGNC:HGNC:3695}

Function

Immune suppressive molecule that inhibits antigen-specific T- cell activation by acting as a major ligand of LAG3 (PubMed:30580966). Responsible for LAG3 T-cell inhibitory function (PubMed:30580966). Binds LAG3 independently from MHC class II (MHC-II) (PubMed:30580966). Secreted by, and promotes growth of, hepatocytes (PubMed:11470158, PubMed:19880967).

Cellular Location

Secreted. Note=Secreted in the blood plasma

Tissue Location

Under normal conditions, liver-specific.

FGL1 Antibody (C-term) - Background

Fibrinogen-like 1 is a member of the fibrinogen family. This protein is homologous to the carboxy terminus of the fibrinogen beta- and gamma- subunits which contains the four conserved cysteines of fibrinogens and fibrinogen related proteins. However, this protein lacks the platelet-binding site, cross-linking region and a thrombin-sensitive site which are necessary for fibrin clot formation. This protein may play a role in the development of hepatocellular carcinomas. Four alternatively spliced transcript variants encoding the same protein exist for this gene.

FGL1 Antibody (C-term) - References

Bailey, S.D., et al. Diabetes Care (2010) In press :
Rose, J.E., et al. Mol. Med. 16 (7-8), 247-253 (2010) :
Segat, L., et al. J. Gastroenterol. Hepatol. 24(12):1840-1846(2009)
Talmud, P.J., et al. Am. J. Hum. Genet. 85(5):628-642(2009)
Yu, H.T., et al. J. Biol. Chem. 284(20):13335-13347(2009)

FGL1 Antibody (C-term) - Protocols

Provided below are standard protocols that you may find useful for product applications.

- [Western Blot](#)
- [Blocking Peptides](#)
- [Dot Blot](#)
- [Immunohistochemistry](#)
- [Immunofluorescence](#)
- [Immunoprecipitation](#)
- [Flow Cytometry](#)
- [Cell Culture](#)