

CO040 Antibody (C-term)
Affinity Purified Rabbit Polyclonal Antibody (Pab)
Catalog # AP12677b

Specification

CO040 Antibody (C-term) - Product Information

Application	WB, IHC-P,E
Primary Accession	Q8WUR7
Other Accession	Q505I4 , Q9CRC3 , Q3ZBP8 , NP_653198.2
Reactivity	Human
Predicted	Bovine, Mouse,
	Rat
Host	Rabbit
Clonality	Polyclonal
Isotype	Rabbit Ig
Calculated MW	16353
Antigen Region	72-100

CO040 Antibody (C-term) - Additional Information

Gene ID 123207

Other Names

UPF0235 protein C15orf40, C15orf40

Target/Specificity

This CO040 antibody is generated from rabbits immunized with a KLH conjugated synthetic peptide between 72-100 amino acids from the C-terminal region of human CO040.

Dilution

WB~~1:1000

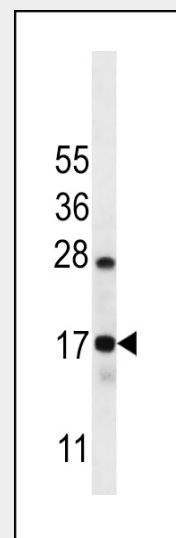
IHC-P~~1:10~50

Format

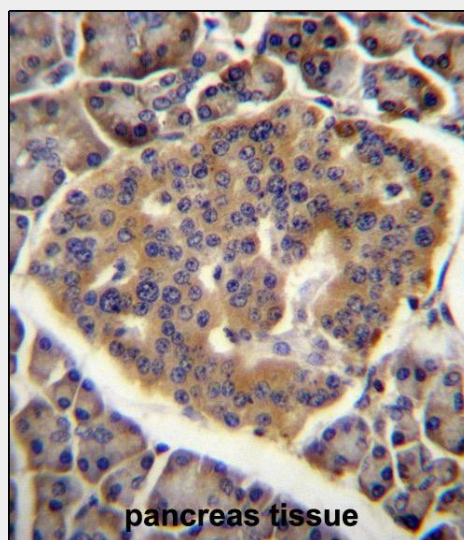
Purified polyclonal antibody supplied in PBS with 0.09% (W/V) sodium azide. This antibody is purified through a protein A column, followed by peptide affinity purification.

Storage

Maintain refrigerated at 2-8°C for up to 2 weeks. For long term storage store at -20°C in small aliquots to prevent freeze-thaw cycles.



CO040 Antibody (C-term) (Cat. #AP12677b) western blot analysis in Ramos cell line lysates (35ug/lane). This demonstrates the CO040 antibody detected the CO040 protein (arrow).



CO040 Antibody (C-term) (Cat. #AP12677b) immunohistochemistry analysis in formalin fixed and paraffin embedded human pancreas tissue followed by peroxidase conjugation of the secondary antibody and DAB staining. This data

Precautions

CO040 Antibody (C-term) is for research use only and not for use in diagnostic or therapeutic procedures.

demonstrates the use of CO040 Antibody (C-term) for immunohistochemistry. Clinical relevance has not been evaluated.

CO040 Antibody (C-term) - Protein Information

Name C15orf40

CO040 Antibody (C-term) - Background

The function of this protein remains unknown.

CO040 Antibody (C-term) - Protocols

Provided below are standard protocols that you may find useful for product applications.

- [Western Blot](#)
- [Blocking Peptides](#)
- [Dot Blot](#)
- [Immunohistochemistry](#)
- [Immunofluorescence](#)
- [Immunoprecipitation](#)
- [Flow Cytometry](#)
- [Cell Culture](#)