

NPHP3 Antibody (N-term)
Affinity Purified Rabbit Polyclonal Antibody (Pab)
Catalog # AP12751a

Specification

NPHP3 Antibody (N-term) - Product Information

Application	WB, IHC-P,E
Primary Accession	Q7Z494
Other Accession	Q6AZT7 , P0CI65 , NP_694972.3
Reactivity	Human
Predicted	Zebrafish,
	Xenopus
Host	Rabbit
Clonality	Polyclonal
Isotype	Rabbit Ig
Calculated MW	150864
Antigen Region	144-173

NPHP3 Antibody (N-term) - Additional Information

Gene ID 27031

Other Names

Nephrocystin-3, NPHP3, KIAA2000

Target/Specificity

This NPHP3 antibody is generated from rabbits immunized with a KLH conjugated synthetic peptide between 144-173 amino acids from the N-terminal region of human NPHP3.

Dilution

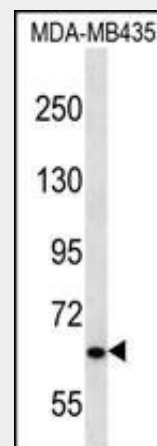
WB~~1:1000
IHC-P~~1:10~50

Format

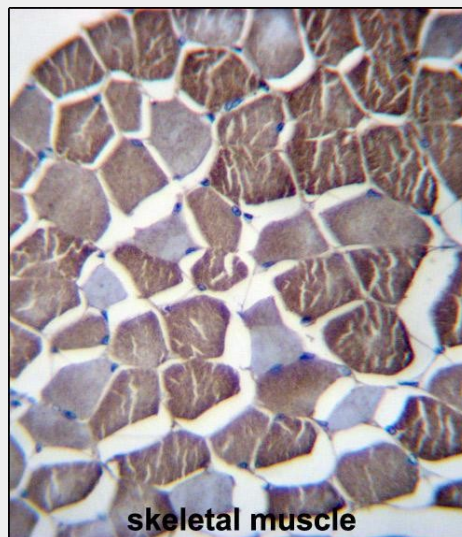
Purified polyclonal antibody supplied in PBS with 0.09% (W/V) sodium azide. This antibody is purified through a protein A column, followed by peptide affinity purification.

Storage

Maintain refrigerated at 2-8°C for up to 2 weeks. For long term storage store at -20°C in small aliquots to prevent freeze-thaw cycles.



NPHP3 Antibody (N-term) (Cat. #AP12751a) western blot analysis in MDA-MB435 cell line lysates (35ug/lane). This demonstrates the NPHP3 antibody detected the NPHP3 protein (arrow).



NPHP3 Antibody (N-term) (Cat. #AP12751a) immunohistochemistry analysis in formalin fixed and paraffin embedded human skeletal muscle followed by peroxidase conjugation of the secondary antibody and DAB staining. This data demonstrates the use of NPHP3 Antibody (N-term) for immunohistochemistry. Clinical relevance has not been evaluated.

Precautions

NPHP3 Antibody (N-term) is for research use only and not for use in diagnostic or therapeutic procedures.

NPHP3 Antibody (N-term) - Protein Information

Name NPHP3

Synonyms KIAA2000

Function

Required for normal ciliary development and function. Inhibits disheveled-1-induced canonical Wnt-signaling activity and may also play a role in the control of non-canonical Wnt signaling which regulates planar cell polarity. Probably acts as a molecular switch between different Wnt signaling pathways. Required for proper convergent extension cell movements.

Cellular Location

Cell projection, cilium Note=Localization to cilium is mediated via interaction with UNC119 and UNC119B, which bind to the myristoyl moiety of the N-terminus

Tissue Location

Widely expressed at low level. Expressed in heart, placenta, liver, skeletal muscle, kidney and pancreas. Expressed at very low level in brain and lung.

NPHP3 Antibody (N-term) - Background

This gene encodes a protein containing a coiled-coil (CC) domain, a tubulin-tyrosine ligase (TTL) domain, and a tetratricopeptide repeat (TPR) domain. The encoded protein interacts with nephrocystin and may function in renal tubular development and function. Mutations in this gene are associated with nephronophthisis type 3. Multiple splice variants have been described but their full-length nature has not been determined.

NPHP3 Antibody (N-term) - References

Simpson, M.A., et al. Am. J. Kidney Dis. 53(5):790-795(2009)
Tory, K., et al. Kidney Int. 75(8):839-847(2009)
Bergmann, C., et al. Am. J. Hum. Genet. 82(4):959-970(2008)
Hoefele, J., et al. J. Am. Soc. Nephrol. 18(10):2789-2795(2007)
Leipe, D.D., et al. J. Mol. Biol. 343(1):1-28(2004)

NPHP3 Antibody (N-term) - Protocols

Provided below are standard protocols that you may find useful for product applications.

- [Western Blot](#)
- [Blocking Peptides](#)
- [Dot Blot](#)
- [Immunohistochemistry](#)
- [Immunofluorescence](#)
- [Immunoprecipitation](#)
- [Flow Cytometry](#)
- [Cell Culture](#)